



RAILWAY PHILATELIC GROUP

Winter 2019/20 POSTAL AUCTION



A postal auction (open only to RPG members) offering railway letter stamps, newspaper and parcel stamps, preserved railway items, postmarks and ephemera.

Closing Date: All bids will close at **NOON** on **FRIDAY, 31st JANUARY, 2020**

NEW RULE 3 FOR AUCTION BIDS - PLEASE READ

- (a) Your bid(s) should be entered on the Bidding Form, and **must be accompanied by a signed cheque** payable to the **RAILWAY PHILATELIC GROUP** with the amount left blank and endorsed **NOT TO EXCEED £XXX**, where £XXX is the total of all your bids plus an allowance for postage and packing (see postage costs below). The Bidding Form and Cheque should be posted to the Auctioneer.
- (b) **Bids without such a cheque cannot be entered in the Auction.**
- (c) If you successfully bid for any item(s), we will enter on the cheque the total amount due for the items you have bought plus postage and packing (see postage costs below). Lots will be sent to the successful purchasers, together with a receipt for monies paid. If you are completely unsuccessful in the Auction your cheque will be **shredded**.
- (d) To guarantee the security of cheques please ensure you enter:
RAILWAY PHILATELIC GROUP on the 'Pay....' line.

(Note: This procedure is similar to that used by other reputable Postal Auctions. It has been necessary to introduce this procedure to overcome the problem of late payments by a small number of bidders (different people each time) which have caused unacceptable delays of 3 months or more in the payment of monies to vendors/sellers.)

Postage costs for Lots or combined Lots won at less than £100 will be charged at a minimum postage rate and paid by the purchaser. Lots or combined Lots sold at £100 or over will be sent by Registered/Special Delivery with the postage costs again paid by the purchaser. (Full Auction Rules available on railwayphilatelicgroup.co.uk web site)

Hon. Auctioneer (for all bids & enquiries)

BILL PIPE 7, RICHARD CLOSE, UPTON POOLE, DORSET, BH16 5PY
Tel: 01202 623300, email: magpiebillpipe@freeuk.com

Bidding:

- (a) **By Post** Bids are acceptable by post (to the above address)
- (b) **By email** Bids are accepted by email, but a cheque (as described above) **MUST be received by 31 January or else such bids cannot be entered in the Auction.**

All lots are a minimum of Res £** as listed on the following pages.

Photocopies:

Photocopies of un-illustrated Lots (at 5p per Lot) are available by post from the Auctioneer (contact details above). To request such photocopies please enclose a stamped addressed envelope **plus fully-gummed postage stamps** of sufficient value to pay for the photocopies.

Scans: Scans of un-illustrated Lots (no charge for scans) are available by email from:
magpiebillpipe@freeuk.com

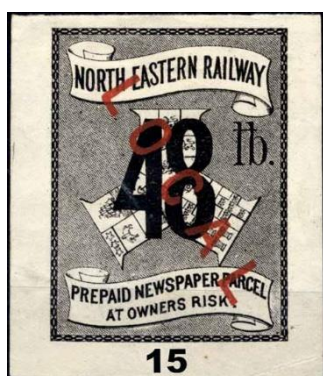
RPG AUCTION LISTING (Winter 2019/20)

A PAPER COPY OF THE CATALOGUE IS AVAILABLE FROM THE HON AUCTIONEER, BILL PIPE

1. NORTH EASTERN RAILWAY - IMPERF PROOF "FOR SINGLE NEWSPAPERS ONLY" Without control number and very lightly mounted mint - [see first illustration below](#) Res £25



2. GREAT EASTERN RAILWAY - Selection on stock card including 1d brown Parcels service, One Newspaper green, 4 newspapers 2d green on red, 4 newspapers 2d black on green x 2. All are used [5] Res £12
3. NORTH EASTERN RAILWAY - "Single Newspapers Only" 1d values 882098/099 & 104 [3] Res £5
4. NORTH EASTERN RAILWAY - IMPERF PROOF 1d red prepaid newspaper parcel stamp-very lightly mounted mint and without control numbers - [see illustration above](#) Res £22
5. NORTH EASTERN RAILWAY - IMPERF PROOF 1½d Blue as previous lot Res £25
6. NORTH EASTERN RAILWAY - IMPERF PROOF 2d Red as previous lot Res £25
7. NORTH EASTERN RAILWAY - IMPERF PROOF 3d Red as previous lot Res £25
8. NORTH EASTERN RAILWAY - IMPERF PROOF 4d Red as previous lot Res £25
9. NORTH EASTERN RAILWAY - IMPERF PROOF 6d Red as previous lot - [see illustration above](#) Res £25
10. NORTH EASTERN RAILWAY - IMPERF PROOF 1½lb black with LOCAL overprint, very lightly mounted mint and without control numbers - [see illustration above](#) Res £25
11. NORTH EASTERN RAILWAY - IMPERF PROOF 3lb with LOCAL overprint as previous lot Res £25
12. NORTH EASTERN RAILWAY - IMPERF PROOF 6lb with LOCAL overprint as previous lot Res £25
13. NORTH EASTERN RAILWAY - IMPERF PROOF 12lb with LOCAL overprint as previous lot Res £25
14. NORTH EASTERN RAILWAY - IMPERF PROOF 24lb with LOCAL overprint as previous lot Res £30
15. NORTH EASTERN RAILWAY - IMPERF PROOF 48lb with LOCAL overprint as previous lot - [see illustration below](#) Res £30



16. AUSTRALIA - 1d red & 3d brown QUEENSLAND Government Railway newspaper & parcel stamps, both nicely used Ca.1905 [2] Res £12
17. AUSTRALIA - South Australian Railways 1d green parcel stamp, used Res £12
18. AUSTRALIA - N.S.W Government Railways 1/- purple parcel stamp, used with framed 42 cancel Res £15

19. AUSTRALIA - 3d & 6d Victorian Railways parcels stamps [6d corner fault], both used from the 1902-1917 issue [7th series 1st issue] [2] Res £15
20. AUSTRALIA - 2d & 5d Victorian Railways parcel stamps from the 7th series, 2nd issue; both used. The 5d has a circular framed 2SP cancel [2] Res £15
21. AUSTRALIA - N.S.W Government Railways 9d red & green & 3/- brown & buff parcels stamps, both used with numeral cancels. Both are from the 1891 issue [2] Res £22
22. AUSTRALIA - South Australia 2d red on green parcels stamp from the 1934 3rd series, 3rd issue; used with a circular 60 over 5 cancel. Res £12
23. AUSTRALIA - TASMANIAN GOVERNMENT RAILWAYS Parcels stamps 1d (black) to 4/- (light blue) [12 stamps]; all in UNMOUNTED MINT CONDITION - [See illustration below](#) Res £60

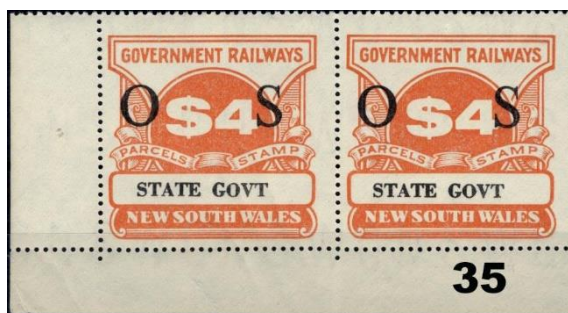


24. AUSTRALIA - NSW Government Railways pair of 1c red parcels stamps from the top left corner of the sheet, issued at BROADMEADOW and in unmounted mint condition [2] Res £6
25. AUSTRALIA - NSW Government Railways pair of 1c red values issued at BROADMEADOW as previous lot [2] Res £5
26. AUSTRALIA - NSW Government Railways 9c blue value issued at LISMORE and in unmounted mint condition Res £5
27. AUSTRALIA - NSW Gov Railway 10c brown value issued at CHATSWOOD - unmounted mint Res £5
28. AUSTRALIA - NSW Gov Railway 8c blue value issued at SYDNEY - Unmounted mint Res £4
29. AUSTRALIA - NSW GOVERNMENT RAILWAYS OFFICIAL 50c orange parcels stamp, unmounted mint with O S overprint in black with STATE GOVT overprint below - [see illustration below](#) Res £15



30. AUSTRALIA - NSW Gov Railway OFFICIAL 20c red/purple value as previous lot with O S overprint Res £15
31. AUSTRALIA - NSW Gov Railway OFFICIAL 10c brown value as previous lot with O S overprint Res £15
32. AUSTRALIA - NSW Gov Railway OFFICIAL 80c olive green values in a pair, as previous lot with O S overprint [2] Res £25
33. AUSTRALIA - NSW Gov Railway OFFICIAL \$3 magenta from the left of the sheet and as previous lots with O S overprint Res £20

34. AUSTRALIA - NSW Gov Railway OFFICIAL \$3 magenta in a pair from the bottom right of the sheet, unmounted mint and with O S overprint etc - [see illustration below](#) [2] Res £35



35. AUSTRALIA - NSW Gov Railway OFFICIAL \$4 orange in a pair from the bottom left of the sheet - unmounted mint and with O S overprint etc - [see illustration above](#) [2] Res £35
36. FRANCE - UNMOUNTED MINT Block of four of the 50c dull red COLIS POSTAL/ VELUER DECLAREE/JUSQU'A/500 FRANCS with a large letter A overprint - scarce - [see illustration below](#) Res £25



37. FRANCE - UNMOUNTED MINT Block of four of the 1f50c green COLIS POSTAL/ LIVRAISON PAR EXPRES/D'UN COLIS/DE 10A 15 KILOG with a large letter A overprint - scarce – [see illustration above](#) Res £25
38. FRANCE - Unmounted mint block of four of the 1f60c green value as previous lot with large letter A overprint and weight "DE 3.5 DU 10 KILOG" Res £25
39. FRANCE - Unmounted mint block of four of the 1f65c green value as previous lots with same overprints and weight "DE 15A 20 KILOG" Res £25
40. FRANCE - Unmounted mint block of four of the 1f brown on yellow COLIS POSTAL/ APPORT LA GARE/D'UN COLIS/DE 3.5 DU 10 KILOG With same large letter A overprint - scarce Res £25
41. FRANCE - Unmounted mint block of four of the 1f50c brown on yellow "APPORT LA GARE" with weight "DE 10A 15 KILOG" and usual A overprint Res £25
42. FRANCE - Unmounted mint block of four of the 1f65c brown on yellow "APPORT LA GARE" with weight "DE 15A 20 KILOG" and large A overprint Res £25
43. BALLYCASTLE RAILWAY - 2d green and 2d blue RLS in unused condition from the 1898 & 1904 issues [2] Res £15
44. CASTLEDERG & VICTORIA BRIDGE TRAMWAY COMPANY - 2d RLS from the 1899 issue in unused condition Res £4
45. DUNDALK, NEWRY AND GREENORE RAILWAY - 2d RLS x 2 from the 1894 & 1904 issues - very fresh [2] Res £12
46. DONEGAL RAILWAY COMPANY - Three different 2d green RLS in unused, very fresh condition [3] Res £12
47. SOUTH EASTERN AND CHATHAM AND DOVER RAILWAY—Unused pair of the 5d pink FARM PRODUCE Parcel Stamps 17399 & 17400 with Ewen notation in bottom margin [1 stamp has corner damage] [2] Res £15
48. LONDON & SOUTH WESTERN RAILWAY - 2d RLS on piece below 1d GEO V value; both tied by rubber HORSLEY/L.S.W.R/DATE/CANCELLED in violet ink, dated 16.9.1916 Res £10
49. LONDON & SOUTH WESTERN RAILWAY - Two 2d RLS, one on piece & a single stamp, both cancelled by the oval undated telegraphic cancel of HASLEMERE STATION. Also repro postcard of the station with wagons outside [3] Res £7
50. LONDON, CHATHAM & DOVER RAILWAY - 2d RLS in very fine, unused condition Res £15
51. THE FURNESS RAILWAY - 2d RLS in very fine, unused condition from the January 1897 issue Res £12
52. THE FURNESS RAILWAY - 2d RLS with control number 1183 in very fine, unused condition from the 1898 issue Res £6

53. LONDON & SOUTH WESTERN RAILWAY - 2d RLS with manuscript cancellation dated 19.2.1896 and with large part [SU]RBITON s/line cancel in violet ink. Also LSWR luggage label From.....To Surbiton of 1878 [2] Res £7
54. STRATFORD UPON AVON AND MIDLAND JUNCTION RAILWAY - Unmounted mint marginal example of the 1d blue "SHAKESPEARE ROUTE" Prepaid newspaper parcel stamp with control 1055 Res £18
55. DUBLIN, WICKLOW & WEXFORD RAILWAY - 2d RLS in fine, unused condition Res £7
56. PEMBROKE & TENBY RAILWAY - 2d RLS from the top left corner of the sheet and from the 1893 issue in lovely, fine unused condition with control number 1589 Res £18
57. BARRY RAILWAY - 2d RLS from the 1902 issue postally used with a lovely d/ring cancel BARRY B.O [GLAM]/2 dated 25.5.1903 struck centrally. Below is a large part LLANTWIT MAJOR s/line cancel in violet ink Res £15
58. GREAT NORTHERN RAILWAY COMPANY [OF IRELAND] - 2d Very bright green RLS with an anonymous machine cancel and an almost 100% strike of the s/line BALLYBEG in violet ink Res £22
59. GREAT EASTERN RAILWAY - 1d & 2d green paid parcel stamps. The 1d with printed LIVERPOOL STREET [Control 37425] used with pencil cancel & the 2d without printed station name [control 38322] cancelled by s/ring company cancel of BOTTERHILL/PARK?? In 1919 [2] Res £12
60. GREAT EASTERN RAILWAY - Larger size 3d CORN SAMPLES stamp used with pencil cancel Res £10
61. BARRY RAILWAY - Very lightly mounted mint examples of the 2d black on green & 3d black on pink newspaper parcel stamps [2] Res £18
62. BARRY RAILWAY - An uncommon example of a very nicely used example of the 1d black on white newspaper parcel stamp with crayon cancel. Usually, these used examples are nearly always damaged, if not mutilated!! - see illustration below Res £22



63. GREAT WESTERN RAILWAY - 1d, 2d, 3d, 4d & 6d prepaid newspaper parcel stamps, all used [5] Res £9
64. GREAT NORTHERN RAILWAY - Scarcer unused yellow stamp with overprint GRAIN/ SAMPLES/ONE/POUND/OR UNDER in lovely once only mounted mint condition Res £18
65. NORTH EASTERN RAILWAY - Very lightly mounted mint examples of the 1½lb, 6lb & 12lb prepaid newspaper parcel stamps with LOCAL overprint and control numbers 553751 [small numbers], 472116 [large numbers touching the 6] and 649211 [large numbers at far left] [3] Res £22
66. LONDON & NORTH WESTERN RAILWAY - 1d, 2d, 3d & 7d parcel stamps, all used and all with the black value overprint on the same value, i.e 1d on 1d etc. [4] Res £5
67. LNWR 9d & 2 x 1/ - parcel stamps on "Carriage Paid" baggage/parcel label addressed to a farm in Surrey, via the LSWR station at WOKING. The stamps all have manuscript date cancels of 20.3.1916 Res £18
68. LNWR - Selection of used parcel stamps [all unallocated], 4d, 6d x 2 & 1/ - values [4] Res £4
69. STRATFORD UPON AVON AND MIDLAND JUNCTION RAILWAY - Lightly mounted mint example of the "SHAKESPEARE ROUTE" ½d orange prepaid newspaper parcel stamp with control number 1348 Res £18
70. LONDON & SOUTH WESTERN RAILWAY - Vertical pair of the 2/6d "Paid Parcel From" PORTSMOUTH TOWN [No.1] cancelled by the LSWR circular station cancels on 3.7.1915 Res £8
71. NIGG STATION - Vertical pair of the LMS 4/ - parcel stamps issued at & used from Nigg Station on 31.12.1951 Res £8
72. LONDON BRIGHTON & SOUTH COAST RAILWAY - A vertical strip of 3½ x 3/ - LONDON & SOUTH WESTERN RAILWAY Paid parcel stamps issued at PORTSMOUTH TOWN [No.1] Station and cancelled unusually by the LBSCR circular cancel of the station dated 18.8.1915 and not the LSWR cancel Res £22
73. NORTH STAFFORDSHIRE RAILWAY - 2d RLS in very fresh, unused condition Res £4

74. GREAT NORTH OF SCOTLAND RAILWAY - 4d on 3d overprint value on piece and a used example with pen cancel of the GLASGOW & SOUTH WESTERN RAILWAY 2d RLS [2] Res £9
75. STRATFORD UPON AVON & MIDLAND JUNCTION RAILWAY - Lovely, mint example of the 1d blue "SHAKESPEARE ROUTE" prepaid newspaper parcel stamp with control number 1058 Res £18
76. SOUTHWOLD RAILWAY - 2d RLS used with pencil cancel and with the control number 402 Res £22
77. DUBLIN & SOUTH EASTERN RAILWAY - 4d green RLS in very fresh, unused condition Res £4
78. BELFAST & COUNTY DOWN RAILWAY - 2d dark green RLS from the 1898 issue in fine, unused condition Res £7
79. MANCHESTER, SHEFFIELD & LINCOLNSHIRE RAILWAY - Scarcer used 2d RLS with blue pencil cancel Res £10
80. LONDON, BRIGHTON & SOUTH COAST RAILWAY - Very fresh, unused 4d on 3d surcharge value in violet ink from the 1920 issue Res £8
81. CORK, BLACKROCK & PASSAGE RAILWAY - 2d RLS from the 1898 issue and from the top left of the sheet, in very fine, unused condition Res £18
82. REPRO Postcards of ESHER [For Claremont] Station, ESHER station and WEYBRIDGE station as well as a Southern Railway 1946 "TO.....WEYBRIDGE" Label [4] Res £5
83. ISLE OF MAN - Parcel Service First day of Service pair of luggage labels with 10p "stamps" affixed, one used and one not on 1.9.1971 [2] Res £5
84. SOUTH AFRICA - "THE WHITE TRAIN/DIE WITTEIN" - Headed notepaper together with the South African Royal Visit pairs affixed to an envelope addressed to London, cancelled by the South African Coat - of - Arms oval cancels dated 28.2.1947 Res £15
85. NORTH STAFFORDSHIRE & MID - DERBYSHIRE RAILWAY Printed QV ½d violet postal stationery postcard addressed within BRADFORD on 16.1.1877 with an "Assenting" vote for the local Member of Parliament Res £9
86. MANCHESTER, SHEFFIELD & LINCOLNSHIRE RAILWAY - Printed entire addressed to INCE, near Wigan on 28.3.1850 with 1d red imperf tied by the 498 numeral cancel of MANCHESTER. Inside, is a notification to Parliament for introduction of two clauses at the Committee Stage - nice! Res £18
87. "THE ROYAL TRAIN, CANADA" - Headed notepaper written from the Royal Train at WASHINGTON D.C on 9th June [1939] Res £12
88. NORTH BRITISH RAILWAY - Printed entire addressed to TUNBRIDGE WELLS with circular EDINR/PAID cancel in red ink, dated 10.2.1872. Inside is the notice for the Special General Meeting of shareholders and a Proxy Vote form Res £10
89. BELGIUM - "ABAC" [The Association of Belgian Friends of the Railway] postcard showing a 1945 loco type 29 of the SNCB [Belgian Railway] with 1f20c + 30c railway charity stamp depicting E Walschaerts, tied by the special cancel of the 1958 International Railway Exhibition, Brussels dated 1.11.1955 - nice!! Res £20
90. HOLLAND - Postcard to London with 2 x 2½c values tied by the d/ring TPO cancel AMSTERDAM - ANTWERPEN/IX dated 28.8.1911 Res £6
91. EAST AFRICA - Three examples of the GEO V 10c orange definitives on piece, all cancelled by Indian style TPO cancels T.P.O/SET No.1 dated 3rd, 10th & 11th February, 1920 [3] Res £18
92. WORTHING/STATION OFFICE - 923 Duplex cancel dated 3.7.1888 [with "88" inverted, ties 1d lilac to cover addressed to London Res £12
93. COCKFIELD RSO/Co. DURHAM - S/ring dated 18.6.1906 ties stamp to postcard Res £5
94. SUDAN - "MULE MALE" Cover addressed to KURMUK with 5m Arab Postman issue tied by s/ring ER - ROSEIRES [TPO] cancel dated 16.8.1936, arriving on 20.8.1936 Res £12
95. GREAT WESTERN RAILWAY - Crested cover from the General Manager's Office addressed to Shepton Mallet with QV 1d red plate 148 perfin GR/W and tied by PADDINGTON duplex cancel dated 23.1.1874 Res £20
96. LONDON, BRIGHTON & SOUTH COAST RAILWAY - Official picture postcard of BUNGALOW TOWN, SHOREHAM addressed to Upper Norwood with GEO V ½d value perfin BR of the Brighton Railway, tied by LONDON S.E machine cancel dated 30.1.1917. The card is written from London Bridge Station Res £22
97. NORTH EASTERN RAILWAY - Longer, printed envelope addressed to Blackburn with 1d lilac perfin NE/R tied by YORK/+ d/ring dated 12.11.1896 Res £12

98. GREAT WESTERN RAILWAY - Crested company envelope addressed to Cullompton, Devon with 1d red plate 143 perfin GR/W tied by BASINGSTOKE - 52 four - bar duplex cancel on 1.8.1873 Res £20
99. GREAT CENTRAL RAILWAY - Official correspondence postcard addressed to BOCKING, Essex with EDW VII ½d perfin GC tied by LONDON N.W machine cancel dated 20.9.1906 Res £8
100. CAMBRIAN RAILWAYS - Official picture postcard of Aberystwyth addressed to Croydon with EDW VII ½d perfin CAM/RYS and tied by OSWESTRY - 595 duplex cancel dated 8.2.1905 Res £12
101. GREAT WESTERN RAILWAY - Crested envelope from the accountant's office addressed to LLANGOLLEN with 1d red plate 122 perfin GR/W tied by LONDON W duplex cancel dated 11.5.1869 [cover has repaired tear] Res £15
102. GREAT EASTERN RAILWAY - Official picture postcard of Sheringham Beach addressed to Ipswich with framed the "Bracing East Coast....." framed advert at top left and with the EDW VII ½d perfin GER tied by IPSWICH/2 d/ring dated 24.1.1911 Res £9
103. SOUTH EASTERN & CHATHAM RAILWAY—Crested envelope of the SOUTH EASTERN RAILWAY addressed to Penrith with EDW VII 1d perfin SE/CR and tied by LONDON S.E machine cancel dated 22.2.1908. Nice combination usage Res £18
104. LNER - Printed correspondence postcard addressed to Worcester from LIVERPOOL STREET Station with GEO V ½d photogravure value perfin with the larger size LNE perfin [which never ever fitted the stamp!], tied by undated London triangular cancel, Ca.1935 Res £7
105. GREAT EASTERN RAILWAY - UNDELIVERED Cover from London addressed to SOUTHAMPTON with EDW VII 1d perfin GER tied by machine cancel. On the front are four Southampton cancels dated between the 21st & 23rd of November, 1909 and various manuscript annotations, before being returned to sender Res £12
106. LONDON & SOUTH WESTERN RAILWAY - Crested company envelope addressed to Cornwall with 1d lilac perfin LS/WR tied by London duplex cancel dated 17.7.1886 Res £10
107. GREAT NORTHERN RAILWAY - Postcard addressed to North Thoresby with EDW VII ½d blue - green perfin GNR, tied by SLEAFORD d/ring dated 15.6.1904 Res £8
108. CAMBRIAN RAILWAYS - Small piece with a pair of 1d reds from plate 165, both perfin CAM/RYS and tied by OSWESTRY duplex cancels dated 18.10.1876 Res £8
109. GREAT WESTERN RAILWAY - GWR Official correspondence picture postcard of Shakespeare's birthplace addressed within Kidderminster with lovely straight line KIDDERMINSTER struck in violet ink at top left in appropriate place for the station name. The EDW VII ½d is perfin GWR and tied by d/ring dated 1.5.1906 Res £8
110. LONDON & NORTH EASTERN RAILWAY - Correspondence postcard addressed within NEWARK with GEO VI 1d red perfin LN/R tied by machine cancel dated 24.4.1947 Res £5
111. GREAT WESTERN AND MIDLAND & SCOTTISH RAILWAY COMPANIES - Printed invoice from STROUD Station dated August 1940 addressed to Woodchester, Stroud with dark colours 1d perfin GWR tied by machine cancel dated 26.9.1940. Nice wartime collaboration between railway companies Res £6
112. SOUTH EASTERN & CHATHAM RAILWAY - Printed correspondence postcard addressed within London from Blackfriars Station with GEO V ½d perfin SE/CR, tied by LONDON S.E machine cancel dated 22.1.1915 Res £9
113. LONDON & SOUTH WESTERN RAILWAY - Postcard of Winchester Cathedral addressed to London & redirected to Torquay with EDW VII 1d perfin LS/WR and tied by d/ring DOCKS B.O/SOUTHAMPTON dated 1.9.1907 - nice Late Fee item too! Res £8
114. TAFF VALE RAILWAY - EDW VII ½d yellow - green postal stationery postcard addressed to Barry with perfin TV/R through the stamp impression on 24.8.1906 Res £12
115. NOTTINGHAM JOINT STATION COMMITTEE - Printed cheque/money order for £25 dated 5.12.1916 with 1d GEO V 1d added as a receipt stamp with perfin GC of the Great Central Railway added and tied by signature Res £8
116. NOTTINGHAM JOINT STATION COMMITTEE - Printed cheque/money order for £22 - 4 - 00 dated 4.2.1919 with GEO V 1d added with perfin GNR of the Great Northern Railway, tied by signature Res £8
117. LONDON & SOUTH WESTERN RAILWAY - Printed correspondence postcard addressed to EMSWORTH with lovely s/line HAVANT in violet ink on the message side. The EDW VII ½d blue - green is perfin LS/WR and tied by HAVANT duplex cancel on 8.2.1903 Res £7

118. MANCHESTER, SHEFFIELD & LINCOLNSHIRE RAILWAY - 2 x 1d lilacs perfin MS/&L, 1/2d green, 1/2d Bantam plate 21 and 1d reds from plates 201 & 183 all perfin MS&L. Lovely little lot with good perfs all round [6] Res £20
119. TPO SELECTION - ELEVEN Covers or cards with TPO cancels including HULL/BQ s/ring 1896, HULL/1 s/ring 1881. Exeter & Torrington, up 1916, SHREWSBURY & ABERYSTWYTH 1896 and LOndon & Brighton Sorting carriage 1913 & 1914 [11] Res £15
120. RSO SELECTION - Postcard selection with RSO cancels including NORTHWOOD, YARMOUTH, SHARPNESS, LONG MELFORD, RAVENGLASS, APPLIEDORE, BROMFIELD, LINKINGHORNE and others [13] Res £15
121. PORTUGAL - A wonderful selection of TPO cancels on piece - all with complete cancels from the 1930's to the 1960's [24] Res £10
122. PORTUGAL - A similar lot to the previous one with dates from the 1930's to 1950's [23] Res £10
123. PASSAGE WEST RSO/Co. CORK - S/ring dated 7.7.1906 ties stamp to postcard Res £4
124. GREENORE RSO/ LOUTH - S/ring arrival mark dated 8.11.1904 on postcard from DEVONPORT Res £5
125. CZECHOSLOVAKIA TO NORWAY - Austro - Hungarian 5h postal stationery postcard with added 5h tied by bilingual d/ring SMICHOV dated 16.1.1902. At top left is the dotted s/ring [Swedish TPO] PKXP.No.47 dated 28.1.1902 and below is the d/ring SASSNITZ - TRELLEBORG/142 TPO cancel dated the previous day Res £8
126. FRANCE - Undulating cancel FECAMP - DIEPPE/* ties a 10c Sower to postcard addressed to Liverpool on 19.8.1912 Res £4
127. LUCAN RSO/Co. DUBLIN - S/ring dated 10.5.1904 ties stamp to postcard Res £5
128. KILLALOE RSO/Co. CLARE - S/ring dated 29.7.1907 ties stamp to postcard Res £4
129. CROATIA TO SLOVENIA TPO - Postcard with Austro - Hungarian 5h tied by s/ring POLA - DIVACA cancel dated 19109 with framed trip No.339 Res £6
130. KING'S LANGLEY RSO/HERTS - S/ring dated 8.9.1905 ties stamp to postcard Res £4
131. NORTHWOOD RSO/MIDDLESEX - Superb ***** s/ring strike dated 22.10.1906 ties stamp to postcard Res £5
132. RANNOCH STATION/678 - Scots d/ring numeral cancel dated 18.8.1910 ties stamp to postcard Res £5
133. WELLINGTON COLLEGE STATION - S/ring arrival mark dated 15.1.1890 with index B on back of mourning cover from BEESTON Res £5
134. WELLINGTON/COLLEGE STN - Scarcer skeleton cancel dated 12.3.1919 ties stamp to postcard - [see illustration below](#) Res £25



135. MICHELDEVER STATION/+ D/ring dated 22.4.1906 ties stamp to postcard Res £5
136. SPAIN - Commercial cover to the UK with CEPT 8 Peseta value tied by octagonal cancel AMB/EXPRESS/CORDOBA - ALGECIRAS dated 17.8.1977 Res £5
137. SOUTH WESTERN TPO/NIGHT DOWN - S/ring dated 3.3.1932 ties stamp to commercial cover addressed to Cambridge Res £8
138. EAST ANGLIAN TPO DOWN - S/ring transit mark dated 1.8.1933 on postcard from Great Yarmouth addressed to March Res £7
139. EDINR CARSTAIRS SORTING TENDER/ - Unframed circular cancel dated 5.7.1878 with index D on back of clean cover addressed to Edinburgh from Coventry Res £8
140. EXPRESS MAIL - Commercial cover addressed to Penzance with QEII 2 1/2d & 1/ - Wildings tied by d/rings GREAT WESTERN TPO/DOWN dated 29.7.1957 - Nice item paying both the Express Fee & the Late Fee as well as the postage!! Res £10

141. LONDON AND DOVER SORTING CARRIAGE/POSTAGE DUE - Underpaid cover from ETAPLES addressed to London on 4.3.1908. On the address side is the hexagonal tax mark T/10/C.68 of the Sorting Carriage Res £12
142. BEDLINGTON STATION/NORTHUMBERLAND - Krag machine cancel dated 16.1.1962 ties stamp to commercial cover addressed to London Res £8
143. BOSHAM STATION/CHICHESTER SUSSEX - D/ring cancel dated 30.9.1958 ties stamp to commercial cover addressed to Hertford Res £4
144. BRAMPTON JUNCTION - S/ring transit mark dated 5.8.1903 with index A on postcard from Newcastle Res £7
145. SOUTH AFRICA - Airmail cover to Surrey with 2 x 3d & a 1/ - value tied by d/rings S.A.R - S.A.S/JOHANNESBURG dated 16.12.1957. Below is the bilingual station registration label Res £6
146. S.A - Commercial cover to Ohio from Richmond, Indiana with 2c value tied by s/ring RICHMOND, IND/TRANS CLERK dated 31.10.1880 Res £15
147. DUBLIN & DROGHEDA RAILWAY - 14th February 1874 printed invoice for £2 - 00 - 7d with Inland Revenue 1d affixed & tied by signature Res £8
148. DUBLIN & DROGHEDA RAILWAY - Pictorial printed invoice from KELLS STATION dated 22.8.1861 for 3/6d Res £8
149. MICHELDEVER STATION - 22 Circular duplex cancel dated 23.5.1865 with index C ties 1d red plate 80 to mourning cover addressed to Basingstoke - nice! Res £12
150. LAINDON STATION/ROMFORD - S/ring dated 19.12.1906 ties stamp to postcard Res £6
151. HASTINGS/STATION OFFICE - Lovely strike of the s/ring dated 3.5.1896 ties 1d lilac to cover Res £7
152. FARNBOROUGH STATION - 023 Circular duplex cancel dated 15.8.1870 with index E ties 1d red plate 122 to cover addressed to the Lawn Brewery, Winchester Res £8
153. LONDON & NORTH WESTERN RAILWAY - "Through Tourist Ticket" dated 5.8.1922, valid third class from PITLOCHRY TO PENRITH and back, via CARLISLE & PERTH. The two halves have been rejoined [as they were separated for each journey] Res £6
154. LONDON & NORTH WESTERN RAILWAY - "Through Tourist Ticket" dated 21.12.1905 valid second class from LLANDUDNO to London, via Welshpool, Shrewsbury & Stafford and back, via the same route. Again two rejoined halves Res £6
155. EAST LONDON RAILWAY JOINT COMMITTEE - 24th August 1943 return ticket from Whitechapel to Surrey Docks for a Bicycle. Two halves are still joined Res £7
156. DEVON DOCK & PIER COMPANY - Through single ticket for HM Forces & Police on duty, Theatrical Parties & Music Hall Artistes for the short trip from EXMOUTH TO DAWLISH on 15.5.1942 Res £6
157. EXPRESS MAIL - Commercial cover addressed to London with GEO V ½d, 1½d & 6d values tied by s/rings GALLOWAY SORTING CARRIAGE dated 20.10.1924 with index Some light foxing, but still uncommon Res £22
158. CALEDONIAN RAILWAY - GEO V ½d printed postal stationery postcard addressed to Stirling [undelivered] and returned to sender with ½d postage due for return to sender tied by d/ring STIRLING dated 4.1.1919 Res £12
159. FRESHWATER STATION/I OF WIGHT - H06 Duplex cancel dated 4.7.1902 with index B ties stamp to postcard Res £8
160. MAURITIUS - PORT LOUIS STATION P.O - D/ring dated 1.9.1967 ties 1967 Self - Government 2c, 10c, 60c & 1 Rupee values to registered airmail cover addressed to the UK. At top left is the Station registration label Res £10
161. MAURITIUS - PORT LOUIS RAILWAY/MAURITIUS - S/rings dated 11.9.1954 ties 10c & 50c values to airmail cover addressed to London Res £6
162. MAURITIUS - PORT LOUIS RAILWAY/MAURITIUS - S/rings dated 12.5.1937 ties 5c & 12c Coronation values to locally addressed registered cover. Below is the hand - struck R PORT LOUIS RAILWAY/No [2147] in black ink Res £10
163. MAURITIUS - PORT LOUIS STATION/MAURITIUS D/ring dated 21.5.1958 ties 60c value to airmail cover addressed to London Res £7
164. MAURITIUS - PORT LOUIS STATION/MAURITIUS - D/ring dated 23.8.1962 ties 35c & 60c values to registered airmail cover addressed to London. The Station registration label is at top left Res £8

165. DUNMANWAY RSO/Co. CORK - S/ring dated 13.11.1908 ties stamp to postcard Res £5
166. HIGHLAND TPO/DOWN - D/ring cancels dated 20.8.1937 ties GEO VI ½d & Coronation value to cover addressed to Birmingham & redirected to Minehead Res £9
167. MIDLAND TPO/GOING SOUTH - S/rings dated 20.1.1930 ties 2 x ½d and a single 1d GEO V values to Late Fee cover addressed to Coventry Res £8
168. UP SPECIAL G/TPO - S/rings dated 1.9.1936 ties GEO V ½d, ½d photogravure, GEO V ½d Silver Jubilee value & EDW VIII ½d [First day] to cover addressed to Croydon Res £10
169. LAURENCETOWN/GILFORD RSO - S/ring dated 7.9.1908 ties stamp to postcard Res £8
170. FESTINIOG RAILWAY - Series of lovely coloured postcards issued by the company and printed by T Stephenson of Prescot [10] Res £8
171. AUSTRO - HUNGARIAN Yellow postal stationery postcard addressed to Dresden, cancelled by the octagonal lozenge TPO cancel BODENBACH/DRESDEN dated 23.12.1873 Res £8
172. PHILIPPINES TO AUSTRIA - 2c green postal stationery envelope addressed to Vienna on 7.10.1908. On the back is the uncommon s/ring BRINDISI/[AMBULANTE] dated 11.11.1908 Res £12
173. GRAYSWOOD/HASLEMERE RSO SURREY - S/ring dated 13.1.1908 ties stamp to postcard Res £5
174. SARAWAK - Cover addressed to Kuching with 5c & 15c values tied by the River TPO cancel RIVERINE/SARAWAK dated 24.8.1984. This is done by favour by the Sarawak authorities as the service was suspended after just 6 years in 1982 - comes with full history Res £8
175. SARAWAK - Cover addressed to the UK with 25c & 50c values tied by skeleton cancels RIVERINE P.O/SARAWAK dated 15.4.1976 - the FIRST DAY of use of the River TPO - comes with full history & write - up Res £15
176. LOUTH & EAST COAST RAILWAY - Pre - addressed entire [Proxy voting form] to Louth with 1d red tied by BARNARD CASTLE - 48 duplex cancel dated 25.8.1879. Res £7
177. INDIA - QV ¼ Anna postcard addressed to NAWAH, cancelled by the squared circle cancel STAWAH CITY dated 7.11.1896. Alongside are the two s/ring cancels J.6 OUT/SET No.3 and J.6 IN/SET No.2; dated 9th & 10th November respectively Res £7
178. FRANCE - 10c Postal stationery postcard addressed to London, cancelled by d/ring GARE POITIERS/VIENNE dated 8.6.1892 Res £5
179. SOUTH AFRICA - Postcard of the PARK RAILWAY STATION, Johannesburg addressed to Hamilton, Scotland & redirected to Gartmore upon arrival. The NATAL EDW VII 1d is tied by d/ring INGOGO RAIL/NATAL dated 16.4.1904 Res £12
180. SOUTH AFRICA - Postcard addressed to Hamilton, Scotland with EDW VII 1d Natal value tied by d/ring INGOGO RAIL/NATAL dated 16.10.1903 Res £9
181. EASTGATE RSO/Co. DURHAM - S/ring dated 27.7.1920 ties stamp to postcard Res £6
182. LONG PRESTON RSO/YORKS - S/ring dated 13.2.1923 ties stamp to postcard Res £5
183. MORWENSTOW/BUDE RSO CORNWALL - S/ring dated 18.7.1921 ties stamp to postcard Res £4
184. ROBOROUGH RSO/DEVONSHIRE - S/ring arrival mark dated 11.8.1913 on postcard from Newcastle Res £4
185. TISBURY RSO/WILTS - S/ring dated 2.10.1916 ties stamp to postcard Res £5
186. WAVENDON/WOBURN SANDS RSO BEDS - S/ring dated 18.10.1913 ties stamp to postcard Res £6
187. WEST CORNFORTH RSO/Co. DURHAM - S/ring dated 16.6.1915 ties stamp to postcard Res £5
188. HORLEY RSO/SURREY - D/ring dated CHRISTMAS DAY 1906 cancels unpaid, stampless postcard addressed to East Grinstead, At left is the manuscript 1d TO PAY Res £7
189. AUSTRALIA - Real photo CENSORED Postcard of Cook's Cottage, Fitzroy Gardens addressed to Surrey with 1½d tied by s/ring ST KILDA RAIL/VIC dated 27.3.1943. Alongside is the violet inked diamond 3/PASSED/BY/CENSOR Res £7
190. N.E.R CAMPING COACH - Lovely real photo postcard of the happy campers alongside their railway coach with text on the back, offering them out at 3 Guineas per week for 6 people & 4 Guineas per week for 8 people Res £6

191. SOUTH AFRICA - Coloured postcard of the interior of the dining saloon on board the BLUE TRAIN Res £5
192. LONDON & NORTH WESTERN RAILWAY - Official postcard advertising on the address side, for holidays at the DOLCOED HOTEL, LLANWRTYD Res £6
193. WAVENDON/WOBBURN SANDS RSO BEDS - S/ring dated 10.6.1907 ties stamp to postcard Res £5
194. HAMSTERLEY/WITTON LE WEAR RSO - S/ring dated 10.6.1903 ties stamp to postcard. Alongside is the s/ring WITTON - LE - WEAR dated the same day Res £5
195. BALFRON STATION - Thimble cancel dated 1.8.1903 with index C ties stamp to postcard Res £5
196. SWINDON STATION/POSTAGE DUE - Glitter postcard addressed to Henley - on - Thames with EDW VII ½d tied by pencil cancel. Alongside is the uncommon, framed LIABLE TO LETTER RATE/881 and below, the 1d/881 tax mark of Swindon Station Res £22
197. EDINBURGH M2 - S/ring transit/arrival mark dated 9.1.1862 with index W on back of cover addressed to Edinburgh from Manchester. On the front is the embossed oval of the MANCHESTER BANKERS/MERCHANTS/AND TRADERS/PROTECTION/ ORGANISATION Res £8
198. EGYPT - "EGYPTIAN STATE RAILWAYS" Printed envelope addressed to London with 5m value tied by s/ring CAIRO/STATION dated 21.12.1916 Res £6
199. SOUTHERN RHODESIA - Lovely illustrated cover marking the 1953 Royal Visit registered to Salisbury with the 6d Rhodes Centenary value tied by the oval Coat - of - Arms ROYAL TOUR cancel dated 2.7.1953. Alongside is a superb strike of the ROYAL TRAIN/S. RHODESIA registration cachet in violet ink Res £12
200. SWITZERLAND - Postcard addressed to Manchester with 5c value tied by d/ring CHATELARD - FRONTIELE dated 23.7.1908. Alongside is the Station mark LA FORCLAZ/[VALAIS] in black ink Res £5
201. SOUTH AFRICA - Newspaper wrapper addressed to Bloemfontein with a 1c South African Railways newspaper parcel stamp affixed [not cancelled] Res £7
202. SOUTH AFRICA - Cover addressed to Johannesburg with a block of 4 x ½d values & a 6d tied by d/rings WESTELIKE R.P.K/WESTERN T.P.O [inverted, transposed date] dated 24.7.1947 Res £12
203. BERLIN TO SWITZERLAND - Entire addressed to Wohlen dated 16.3.1867 with d/ring BASEL - OLTEN TPO mark on the back dated the same day and the further d/ring GR BAU BAHNPOST, also dated the 16th Res £12
204. USA - Commercial postcard addressed within New York City, cancelled by the 1c pictorial railway meter cancel MAILED IN GRAND CENTRAL TERMINAL 20th CENTURY/ LIMITED/NEW YORK - CHICAGO dated 18.2.1944 - pristine!! Res £7
205. DENMARK - Postcard addressed to Germany with 10 Ore value tied by d/ring ODENSE/JB. P.E TPO cancel dated 12.11.1905 Res £6
206. FINLAND - Cover addressed to Helsinki with 2c brown - purple tied by d/ring P VAUNU 14 P. VAGN dated 2.7.1934 Res £6
207. GHANA - Cover addressed to the UK with QEII 3d Gold Coast "Ghana" Independence overprint tied by s/ring TPO WEST A/GHANA dated 29.12.1958 Res £7
208. GERMANY - Cover addressed to MONTPELLIER with a strip of 3 x 1 Groschen values tied by s/rings LEIPZIG P.V No.14/N dated 30.3.1874. On the front and back are two French TPO cancels also Res £18
209. HOLLAND - EXPRESS Mail cover to Nymegen with 10c & 6c values tied by d/rings ARNHEM STATION dated 4.2.1935 Res £6
210. MILFORD JUNCTION - Cover addressed to Gisborough with 1d red stars tied by 3HOS numeral cancel 015. On the back is the elusive single arc cancel MILFORD JUNCTION dated 27.4.1859 Res £28
211. EGYPT - Postcard from Switzerland addressed to Alexandria with the d/ring PORT SAID - ALEXANDRIA/TPO dated 11.7.1907 with index T94 Res £6
212. CLEARBROOK YELVERTON RSO/DEVON - S/ring dated 9.10.1908 ties stamp to postcard Res £8
213. ORTON/TEBAY RSO WESTMORLAND - S/ring dated 23.8.1920 ties stamp to postcard Res £5
214. WOKING STATION - Small cover addressed to Paris with a strip of 3 x 1d red stars tied by the 4 bar duplex cancels dated 11.3.1877 Res £20

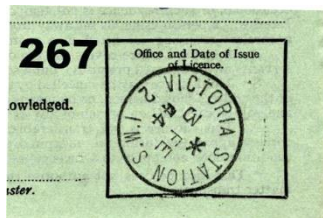
215. SWITZERLAND - Cover from MEILEN, Zurich addressed to WINTERTHUR with 20c commem tied by d/ring
AMBULANT/+ dated 25.10.1924 with index 3495 Res £7
216. USA - Entire addressed to Providence, Rhode Island on 22.5.1849 from Baltimore with lovely s/line BALTIMORE RR
in red ink at top right Res £25
217. CHISELHURST/STATION OFFICE - S/ring arrival mark dated 16.12.1902 on back of EDW VII 1d envelope from
Dundee Res £5
218. BROADSTAIRS STATION B.O./RAMSGATE - Scarcer d/ring cancel dated 25.5.1901 on QV ½d blue - green postal
stationery postcard addressed to London Res £8
219. EGYPT - Postcard from Berlin addressed to Cairo with s/ring PORT SAID - CAIRO/TPO /FOREIGN MAILS transit mark
dated 1.1.1913 with index T.18 Res £6
220. USA - Cover addressed to IRONTON, Philadelphia with 2c brown tied by dumb cancel. Alongside is the unframed
circular cancel NEW YORK & PITTS/R.P.O dated 9.1.1887 with index TRIO/W DIV Res £9
221. LONDON, BRIGHTON & SOUTH COAST RAILWAY/1846 - White on blue embossed crest on the back flap of a cover
addressed to the Great Northern Railway at King's Cross from London S.E on Boxing day, 1865 Res £7
222. GERMANY - Cover addressed locally with BAVARIAN 10Pf with green overprint E tied by d/ring FURTH I WALD 2
OPF dated 9.1.1909 Res £12
223. GOLD COAST - QEII 4d registered postal stationery envelope addressed to London with added 3d & 1/ - values
tied by temporary d/ring cancel TEMA JUNCTION/GOLD COAST dated 19.5.1956. At left is the blank registration
label with the manuscript TEMA JUNCTION in black ink Res £12
224. UP SPECIAL TPO - S/ring dated 13.1.1969 cancels GPO bundle header for "PAID LETTERS FOR/BALKANS" Res £6
225. LATE FEE/PERFIN - QV ½d brown postal stationery postcard addressed to Hamburg with added 1d Venetian red
perfin B&L/L of Bailey & Leatham Limited tied by the octagonal L1/MARK LANE - ML/1 cancel dated 7.9.1881.
Lovely thing - [see illustration below](#) Res £22



226. SWITZERLAND - Postcard addressed to Scotland with 2 x 10c stamps tied by the ESPERANTO CONGRESS Slogan
cancel used at SCHWEIZ AUTOMOBIL BUREAU dated 4.8.1939 Res £6
227. COCKFIELD RSO/Co. DURHAM - S/ring dated 25.8.1905 ties stamp to postcard Res £5
228. BRIDLINGTON/STATION OFFICE - Less common s/ring cancel dated 4.7.1903 as an arrival mark on EDW VII
registered envelope from London addressed to Bridlington Res £12
229. EGYPT - Postcard from Brooklyn addressed to Cairo with s/ring PORT SAID - CAIRO/TPO/ FOREIGN MAILS dated
26.1.1910 with index T.18 Res £6
230. BRAMPTON JUNCTION - S/ring mark dated 16.6.1904 with index A on postcard from Carlisle to Bardon Mill Res £5
231. FRANCE/WWI - Stampless postcard addressed to Great Yarmouth with oval SERVICE MILITAIRE DES CHEMINS DE
FER/COMMISSIONAIRE DE GARE DE TOULON struck at top right. Card is undated, but certainly 1914 - 18 Res £6
232. POWERSTOCK/MELPLASH RSO DORSET - S/ring dated 11.1.1906 with index PM on postcard from MELPLASH
[Duplex cancel] addressed to the USA Res £6
233. SOUTH AFRICA - BLANEY JUNCTION/C.G.H S/ring dated 21.1.1907 ties EDW VII ½d CGH value to postcard
addressed to FORDSBURG Res £7
234. CRAFTHOLE/ST GERMAN'S RSO CORNWALL - S/ring dated 21.11.1908 ties stamp to postcard Res £5

235. PENYGROES S.O/CARNARVONSHIRE - S/ring with "R" removed dated 14.7.1916 on missent postcard from Rhyl addressed to Pencoed Res £5
236. STOKE RIVERS RSO/N DEVON - S/ring dated 6.6.1906 ties stamp to postcard Res £5
237. SWITZERLAND - UNDERPAID Postcard addressed to London with 10c value tied by d/ring AMBULANT/+ dated 2.11.1943. The card is taxed 13 and 1 third and has both GERMAN & BRITISH Censor markings as well as a wash to detect invisible writing Res £8
238. BROMFIELD RSO/SALOP - S/ring dated 1.11.1904 ties stamp to postcard Res £5
239. NEWTOWN BUTLER RSO/Co. FERMANAGH - S/ring dated 13.2.1905 ties stamp to postcard Res £5
240. CENTRAL LONDON RAILWAY - QV ½d brown printed postal stationery newspaper wrapper addressed within London, cancelled by S.W/WN newspaper branch cancel dated 1.8.1896 Res £6
241. DOVER/STATION OFFICE - 258 Duplex cancel dated 14.9.1888 ties 1½d QV Jubilee issue to slightly reduced [at left] cover addressed to Keswick. Nice Late Fee item Res £10
242. GLANMIRE RSO/Co. CORK - S/ring dated 15.2.1909 ties stamp to postcard Res £5
243. VALENCIA ISLAND RSO/Co. KERRY - S/ring dated 28.8.1905 without time or index, ties stamp to postcard Res £5
244. VICTORIA STATION S.W.I/1 - S/ring dated 16.8.1960 cancels QEII 1/3d registered postal stationery envelope size G addressed to Sutton Coldfield Res £8
245. HACHESTON/WICKHAM MARKET RSO SUFFOLK - S/ring dated 4.9.1909 on postcard from Wickham Market [duplex cancel] addressed to Hacheston Res £6
246. MAURITIUS - Registered airmail cover to Devon with 25c & 60c values tied by d/ring PORT LOUIS STATION/MAURITIUS dated 6.4.1957. At left is the framed r - PORT LOUIS STATION/No. [6263] in black ink Res £10
247. LEWES/STATION OFFICE - Squared circle cancel dated 11.5.1894 with index N ties 1d lilac to cover addressed to London Res £8
248. EGYPT - Postcard addressed to Sunderland with 2 x 2m values tied by SUEZ - ISMALIA s/ring TPO cancel dated 17.5.1905 Res £7
249. GREENSIDE/RYTON RSO Co. DURHAM - S/ring dated 18.9.1911 ties stamp to postcard Res £5
250. LYDFORD/BRIDESTOWE RSO NORTH DEVON - S/ring dated 2.7.1912 ties stamp to postcard Res £4
251. GREAT WESTERN RAILWAY - Cover with lovely printed GREAT WESTERN RAILWAY/FINANCE OFFICE in blue on the back flap, addressed to the London Stock Bank, Paddington with 1d red plate 185 perfin GR/W and tied by PADDINGTON duplex cancel dated 2.6.1876 Res £18
252. MINEHEAD RSO - Skeleton cancel dated 27.6.1904 with index E ties stamp to postcard Res £8
253. SPAIN - Cover addressed to France with Franco 25c & 50c values tied by octagonal TPO cancels AMB DESC/NORTE EXPRESO dated 20.8.1948 Res £7
254. REGISTERED/STAFFORD STATION - Oval cancel dated 1.12.1936 on GEO V 4½d registered envelope size F addressed to Cheshire County Court, Chester with the stamp impression being cancelled by s/ring STAFFORD dated the same day Res £18
255. REGISTERED/SWINDON STATION - Oval cancel dated 11.2.1921 on GEO V 4d registered envelope size F addressed to the London, Chatham & Dover Station at Canterbury. The stamp impression is cancelled by s/ring BATH RD/SWINDON on the same day Res £18
256. RUGBY STATION/1 - D/ring dated 26.6.1929 ties ½d P.U.C value perfin BT/H of British Thomson - Houston to printed window envelope Res £8
257. "GO GREAT WESTERN" - Printed slogan envelope addressed to Welwyn, Herts with GEO V ½d perfin GWR tied by rubber LONDON cancel dated 21.4.1930 Res £10
258. CANADA - Postcard addressed to Glasgow, redirected to TROON with Canadian EDW VII 2c tied by superb s/ring TRAIN No/96/DATE/OTT & FT WM RPO dated 11.8.1907 Res £5
259. NORTHWOOD RSO/MIDDLESEX - S/ring arrival mark dated 9.9.1901 on back of cover from Wymondham [Duplex cancel] addressed to NORTHWOOD RSO Res £6

260. PORTSWOOD JUNCTION/SOUTHAMPTON - S/ring dated 21.11.1938 ties 5d GEO VI value to registered cover [FDC] addressed locally. Res £22
261. CALEDONIAN RAILWAY - Printed receipt/invoice dated March 1902 with EDW VII 1d receipt stamp perfin CR, tied by signature Res £7
262. SOUTH AFRICA - 4d Registered postal stationery envelope size G addressed to the Royal Society of Medicine, London with added 2d miniature War Effort stamp tied very nicely by the d/ring MOBILE POST OFFICE No.7/PRETORIA dated 16.10.1944 Res £15
263. EGYPT - Postcard from Italy addressed to Cairo with s/ring transit/arrival mark ALEXANDRIA - CAIRO/TPO/FOREIGN MAILS struck centrally on 2.9.1912 with index T - 24 Res £6
264. WORTHING STATION B.O/WORTHING - 923 Duplex cancel dated 12.11.1896 with time 2.30pm ties ½d vermilion to plain postcard addressed to London Res £10
265. CHICHESTER/STATION OFFICE - Two strikes of the squared circle cancel dated 27.11.1897 with time 7pm ties 2 x ½d vermilion values to nice, clean cover addressed to London Res £12
266. AUSTRALIA - Cover addressed to Edinburgh with GEO V 2d x 2 tied by single strike of the s/ring LATE FEE/ADELAIDE RLY dated 28.2.1936 Res £9
267. VICTORIA STATION S.W.1/2 - Superb strike of the s/ring cancel dated 3.2.1944 on a radio licence issued at the station post office - [see illustration below](#) Res £20



268. OSSETT RSO YORKS/2 - D/ring dated 10.7.1907 ties stamp to postcard Res £5
269. WOODLAND STATION - S/ring dated 14.7.1933 ties stamp to postcard Res £8
270. CARRBRIDGE RSO INVERNESS.SHIRE - S/ring dated 12.8.1906 ties stamp to postcard Res £5
271. WARLINGHAM STATION - S/ring dated 4.4.1886 with index A ties 1d lilac to cover addressed to London - [see illustration above](#) Res £22
272. CROXLEY GREEN RSO/HERTS - S/ring dated 20.2.1909 ties stamp to postcard Res £4
273. SEMLEY STATION - S/ring dated 26.7.190[7] ties stamp to postcard Res £9
274. SWINDON STATION - Super strike of the UNDATED double arc cancel in black ink on entire addressed to Birmingham on 24.5.1847 - [see illustration below](#) Res £45



275. SWANLEY JUNCTION/KENT - S/ring dated 28.11.1925 struck perfectly on Parcel Post Label Res £30
276. STOKE STATION - Dated double arc cancel in blue ink on entire addressed to Derby on 29.4.1857 with index C Res £30
277. GREAT WESTERN RAILWAY - Crested cover from the secretary's office addressed to Exeter with 1d red plate 101 tied by LONDON W duplex cancel dated 30.4.1869 Res £20
278. RUGBY STATION - Stampless, unpaid postcard addressed to Bournemouth, cancelled by the duplex cancel dated 14.4.1902 with the distinctive 1d tax mark struck below Res £15
279. INDIA - Cover with framed POSTED IN/WRONG TRAIN struck on the back in a grey - blue ink on 2.9.1891 Res £10
280. ASHWELL/BALDOCK RSO HERTS - S/ring dated 11.8.1901 cancels stampless, unpaid postcard addressed to Attleborough Res £8
281. LEWES/STATION OFFICE - Two strikes of the squared circle cancel dated 15.11.1895 with index CH*P ties 2 x ½d vermilion values to cover addressed to London Res £12
282. AUSTRALIA - Cover addressed to Leicester with 2d Anzac and 1d GEO V value tied by s/ring LATE FEE SYDNEY RLY STN dated 16.12.1935 Res £10
283. SPAIN - Cover addressed to the BBC with 5p Refugee issue tied by the octagonal TPO cancel AMB/EXPRES/3/GRANADA dated 4.4.1961 Res £6
284. GREAT WESTERN RAILWAY - QV ½d brown printed postal stationery postcard addressed to Monmouth with GWR perfin through the stamp impression, cancelled by PADDINGTON duplex cancel dated 5.5.1886 Res £25
285. GREAT NORTHERN RAILWAY - Postcard of Great Eastern railway loco addressed to Bradford with EDW VII ½d perfin GNR tied by MARGATE/2 d/ring dated 28.5.1906 Res £6
286. GRAND TRUNK RAILWAY OF CANADA - Printed dividend statement addressed to Chesterfield with 1d lilac tied by London squared circle cancel dated 13.10.1898 Res £5
287. INDIA - Postcard addressed to Rajputana with GEO VI 9 Pies tied by d/ring UJJAIN RY STN dated 4.12.1941. Alongside is the d/ring EXPERIMENTAL P.O/DELY/DATE/N - 7 dated 6.12.1941 Res £6
288. SOUTH AFRICA - Registered cover to Surrey cancelled on the front by the oval Coat - of - Arms cancel of the 1947 Royal Visit with the full set in pairs on the back with same cancels Res £8
289. INDIA - Regimental greetings card from the 2nd GREAT INDIAN PENINSULAR RAILWAY REGIMENT, 1930 Res £6
290. JAMAICA - Airmail cover to New York with GEO VI 6d and QEII 2d 1955 commem tied by thin d/ring cancel T.P.O/JAMAICA dated 30.9.1955 Res £8
291. SEYCHELLES - Cover addressed to the USA with 1 Rupee & 2r75c values tied by skeleton cancel CINQ JUIN T.P.O/ZES SEYCHELLES dated 25.11.1985 Res £6
292. CANADA - Postcard addressed to London with EDW VII 2c tied by superb s/ring cancel OTTAWA & FORT WILLIAM RPO/No.2 dated 23.10.1903 with index L Res £5
293. NORWAY - Commercial cover addressed to London with 30 Ore blue tied by d/ring BUREAU AMB OSLO - ED/IV dated 16.4.1939 Res £7
294. EGYPT - Postcard from Scotland addressed to Cairo with s/ring ALEXANDRIA - CAIRO/TPO/FOREIGN MAILS dated 25.6.1912 with index T12 Res £6
295. SIERRA LEONE - Registered cover addressed to Leicester with GEO VI 1/3d tied by s/ring FREETOWN - BO TPO/SIERRA LEONE dated 29.9.1955 Res £15
296. SOUTH AFRICA, CAPE OF GOOD HOPE - QV ½d postal stationery postcard addressed to Wolvefontein, via Uitenhage, cancelled by squared circle cancel of Cape Town dated 21.12.1896. At top left is the s/ring MIDLAND/DOWN dated 23.12.1896 with index U Res £15
297. AUSTRALIA - WWII Airgraph addressed to Brinsop Court, Herefordshire, cancelled by the s/ring ADELAIDE RAILWAY/S.A dated 1.11.1944 - complete with envelope Res £9
298. SUDAN - 5m postal stationery envelope addressed to the Gordon Hotel, Khartoum, cancelled by s/ring WAD - MEDANI dated 7.11.1918. On the back are the s/rings Khartoum dated the same day and a s/ring KHARTOUM - EL OBEID/TPO/No.1 dated the same day Res £22

299. CANADA - Postcard addressed to Ontario with EDW VII 1c tied by lovely s/ring TRAIN No./96/OTT & FT WM RPO dated 1.7.1905 Res £5
300. AMBER GATE, NOTTINGHAM & BOSTON, AND EASTERN JUNCTION RAILWAY & CANAL [COMPANY] - Printed envelope from the company addressed to the Great Northern Railway at Kings Cross with 1d red stars tied by NOTTINGHAM - 583 circular duplex cancel dated 16.9.1859 Res £15
301. INDIA - UP TRAIN/SET No.2 - Framed mark on back of envelope dated 28.1.1899 Res £6
302. AUSTRALIA - Cover addressed to London with 4d stamp tied by ADELAIDE RAILWAY/S.A AUST Postal Note/Money Order slogan cancel dated 1.5.1957 Res £5
303. SOUTH AFRICA, ORANGE FREE STATE - Commercial over from JAGGERSFONTEIN addressed to Port Elizabeth with OVS 1d tied by numeral cancel on 25.5.1895. On the back is the s/ring MIDLAND/DOWN dated 26.5.1895 Res £15
304. CANADA - Postcard addressed to Edmonton with EDW VII 1c tied by superb s/ring CANFIELD JUNCT & ST THOMAS RY PO dated 29.3.1909 Res £7
305. BRITISH INDIAN OCEAN TERRITORY - Cover with 5c & 15c QEII values tied by the d/ring TPO NORDVAER/B.I.O.T dated 14.7.1969 - the first day of use of the TPO Res £6
306. CANADA - NOR RAILWAY/No.2 - S/ring dated 14.11.1889 with index NORTH on Canadian 1c grey postcard addressed to the USA Res £12
307. THUNDERSTORM REPORT CARD Addressed to Huddersfield with GEO VI ½d perfin GWR tied by d/ring MORETON - IN - MARSH/GLOS dated 12.8.1938 Res £6
308. GREAT WESTERN RAILWAY/DATE/STATION MASTER/NARBERTH - Oval cachet dated somewhat out of date on the 5th May 1909 on postcard addressed to LLAWHADEN with EDW VII ½d perfin GWR tied by NARBERTH/+ d/ring dated 20.7.1909 Res £8
309. SOUTH AFRICA/BOER WAR TPO - Cover addressed to Bedford with 1d lilac tied by d/ring ARMY POST OFFICE/E - R/EASTERN TPO without date, but March 1902 Res £22
310. NORWAY - Postcard addressed to ASKER STATION with 5 Ore green tied by d/ring NORDBANERNES PEKSP 1/K dated 27.7.1904 Res £8
311. GREAT CENTRAL RAILWAY - Company correspondence postcard addressed to Birkenhead with EDW VII ½d perfin GC tied by d/ring SALCOMBE BIRKENHEAD/2 dated 22.9.1911 Res £7
312. GREAT EASTERN RAILWAY - Printed correspondence postcard addressed to HALESWORTH with QV ½d vermilion perfin GER tied by LONDON hooded circle dated 25.2.1896 Res £10
313. TAFF VALE RAILWAY - GEO V 1st type postal stationery postcard addressed to NEWPORT, perfin TV/R through the stamp impression and cancelled by CARDIFF Krag machine cancel dated 30.7.1915 - superb, exhibition quality throughout Res £20
314. WELLINGTON COLLEGE STATION - Squared circle cancel dated 4.6.1901 with time 3pm cancels QV ½d brown postcard addressed to Marlborough College. The message states that the GWR has promised a special train from Marlborough to Blackwater on the 28th Res £10
315. TRIMDON STATION/Co. DURHAM - D/ring dated 2.2.1962 ties 3d Wilding to commercial cover Res £6
316. SLEIGHTS STATION/YORKSHIRE - D/ring dated 5.4.1939 ties stamp to envelope Res £6
317. GREAT WESTERN RAILWAY - Cover with contents from the Company Registrar addressed to Hyde Park with 1d lilac perfin GWR and tied by PADDINGTON duplex cancel dated 25.5.1891 Res £18
318. GREAT EASTERN RAILWAY - Crested cover addressed within London with 1d red plate 107 perfin GR/E tied by two strikes of a London duplex cancel on 14.7.1870 Res £18
319. GREAT WESTERN RAILWAY - QV ½d brown printed correspondence postcard from STOURBRIDGE STATION addressed to Brierley Hill, perfin through the stamp impression, GR/W on 30.11.1880 Res £22
320. SOUTH EASTERN RAILWAY Crested envelope addressed to Penrith with EDW VII 1d perfin SE/CR of the SOUTH EASTERN & CHATHAM RAILWAY, tied by LONDON S.E machine cancel dated 29.10.1907 Res £12
321. BURMA - Cover addressed to HENZADA with a pair of GEO VI 1 Anna brown values on the back tied by SET - 5 d/ring TPO cancel on 17.2.1941. Alongside is the d/ring HENZADA/DELY/TRAIN LATE dated 19.2.1941 Res £22

322. GREAT WESTERN RAILWAY - Cover addressed to Peterborough from Reading on 20.1.1930 with manuscript TRY LMS and NOT LNE. The 1d P.U.C stamp is perfin GWR and tied by machine cancel Res £7
323. LONDON & NORTH EASTERN RAILWAY - Company correspondence postcard addressed within Newark with GEO VI 1d perfin LN/E and is tied by machine cancel dated 28.6.1948 Res £5
324. NORWAY - Postcard addressed to London with 10 Ore tied by d/ring VOSSEBANENS POSTEXP/* dated 8.6.1919 Res £6
325. SWEDEN - Postcard addressed to Newton Abbot with 5 Ore green tied by dotted s/ring cancel PLK 150 dated 9.6.1906 Res £4
326. BEAWORTHY RSO/N DEVON - S/ring dated 24.12.1920 ties stamp to postcard Res £5
327. CANADA - Postcard addressed to Nottingham with EDW VII 2c tied by s/ring FORT WILLIAM & WINNIPEG RPO/No.7 dated 23.6.1907 Res £5
328. SOUTH EASTERN RAILWAY - Cover with contents from the secretary's office, London Bridge Station addressed to Milton Green, Chester with 1d lilac perfin SER and tied by LONDON S.E duplex cancel on 20.1.1885 Res £20
329. GREAT WESTERN RAILWAY - Correspondence postcard addressed to Cradley with EDW VIII ½d perfin GWR and tied by DUDLEY/WORCS machine cancel on 23.4.1937. On the back is the oval cachet GOODS DEPARTMENT/GWR/CRADLEY HEATH & CRADLEY, G.W 30 in violet ink Res £5
330. CANADA - Postcard addressed to Watertown, New York with 3c commem tied by s/ring H&OS/RPO dated 13.8.1951 with index 174 Res £5
331. TAFF VALE RAILWAY - QV ½d blue - green postal stationery postcard addressed to Barry with TV/R perfin through the stamp impression cancelled by lovely CARDIFF/5 squared circle cancel dated 27.1.1902 - exhibition quality throughout Res £20
332. PEVENSEY STN OFFICE/SUSSEX - Scarce d/ring cancel dated 23.6.1926 with index A, tis stamp to postcard Res £25
333. LONDON & NORTH EAST RAILWAY - Pair of correspondence postcards addressed to Hertford showing the two different sizes of the LN/E perfins through the 1d red GEO VI values in 1949 [small] and Ca.1950 [large] Res £7
334. SWEDEN - Postcard to Germany with 10 Ore value tied by dotted circle cancel PLK 158 dated 25.7.1902 Res £5
335. CENTRAL SOUTH AFRICAN RAILWAYS - Printed, embossed and crested OHMS smaller envelope addressed to BRAKPAN; but without any postal markings, so presumably carried entirely by train Res £7
336. GERMANY - Commercial cover addressed to London with BADEN 12Pf x 2 & 24Pf x 2 and a French Zone 3f value, all tied by oval ZELL [WEISEN]AL] TODTNAU/BAHNPOST dated 2.6.1947 with Z712 index Res £6
337. BLUEBELL RAILWAY - Miniature sheet of 4 x 25p "BR 9F" Restored, 1990 Res £4
338. STATION SELECTION - Bag containing 22 covers or postcards, all with British station cancels including scarcer, such as GODSTONE Station. Many better condition, but a few not quite so good [22] Res £9
339. COMMERCIAL, MODERN TPO Covers in a bag with 11 envelopes. [a few are philatelic, but better ones] [11] Res £5
340. LONDON & NORTH EASTERN RAILWAY - Longer company registered envelope addressed to Yorkshire with a strip of 3 x 1½d values perfin LN/E tied by s/rings LIVERPOOL ST STATION/E.C dated 17.11.1925 Res £18
341. GREAT NORTHERN RAILWAY - Longer cover addressed within London with GEO V 2d perfin GNR tied by London machine cancel on 4.2.1921 Res £12
342. SOUTH AFRICA - Illustrated and registered ROYAL TRAIN/ROYAL VISIT Cover addressed to Benoni with the 3 pairs tied by the oval cancels on 21.2.1947. At bottom left is the bilingual registration cachet of the Royal Train Res £9
343. WEYBRIDGE STATION - Longer cover addressed to Weybridge with 2 x ½d Bantams from plate 13 tied by London duplex cancels on 8.7.1876. On the back is the s/ring arrival mark dated the following day Res £6
344. SOUTHERN RAILWAY - Longer printed, registered window envelope with GEO V 1½d & 3d values tied by s/rings LONDON BRIDGE STATN/BRIGHTON LINE S.E dated 20.8.1927 Res £18
345. THE BELFAST & COUNTY DOWN RAILWAY - The Oakwood Press history of the line and branches there off with 51 pages of text and photos published in 1958 Res £7
346. BAG LABELS AND FORMS - Bag of these things from all over the place - some railway, some not Res £5

347. BELGIUM - Complete sheets of 25 each of the 80c yellow, 10c brown and 15c grey. Some edge splitting on perfs, but OK [75] Res £10
348. BELGIUM - Complete sheets as previous lot, but only the 80c & 15c values [50] Res £6
349. BELGIUM - Railway forms with railway letter stamps/parcel stamps, or whatever they are affixed & tied by mainly rectangular station cancels - some duplication - approx.40 - 50 forms Res £10
350. BELGIUM - A similar lot Res £10
351. GWR STRIKE, 1919 - Contingency plans drawn up by the company and put into action by the GWR during the protracted strike of September/October 1919. An original lot Res £22
352. BRITISH RAIL HISTORY COVER ALBUM Full of special covers with appropriate cancels. Some are carried and have the further "carried" cachets [33] Res £15
353. BRITISH RAIL HISTORY COVER ALBUM Full of similar items to the previous lot. [58] Res £25
354. EASTERN EUROPE/TRANS - SIBERIAN RAILWAY ETC - Thirty five covers and postcards from Russia and the Baltic States dating from the 1920's through the German occupation period to the fairly modern. Most cancels are very good, but there are a few lightly struck or incomplete strikes - ex Alan Violet collection [40] Res £60
355. W TPO NT DN/BM SECTION - Rubber cancel dated 25.2.1986 ties stamps to cover Res £5
356. BIRMINGHAM GLASGOW TPO/No.2 - D/ring dated 26.9.1996 ties stamp to cover Res £5
357. GLASGOW BIRMINGHAM TPO/No.1 - D/ring dated 26.9.1996 ties stamp to cover Res £5
358. GLASGOW BIRMINGHAM TPO/No.2 - D/ring dated 27.9.1996 ties stamp to cover Res £5
359. BIRMINGHAM GLASGOW TPO - D/ring dated 27.9.1996 ties stamp to cover Res £5
360. GLASGOW BIRMINGHAM TPO - D/ring dated 27.9.1996 ties stamp to cover Res £5
361. NORTH WESTERN TPO NT DOWN/1 - D/ring dated 17.10.1986 ties stamp to cover Res £5
362. NORTH WESTERN TPO NT DOWN/1A - D/ring dated 17.9.1990 ties stamp to cover Res £5
363. NORTH WESTERN TPO NT DOWN/2 - D/rins dated 13.5.1993 ties stamps to cover Res £5
364. NORTH WESTERN TPO NT DOWN/2A - D/ring dated 10.11.1992 ties stamps to cover Res £5
365. NORTH WEST TPO UP/No.1 - D/ring dated 6.10.1993 ties stamp to cover - Wilson 65m Res £8
366. NORTH WEST TPO UP/2 - D/ring dated 30.9.1996 ties stamp to cover - a poor strike of Wilson 65n Res £4
367. NORTH WEST TPO DOWN/No.1 - D/ring dated 14.2.1995 ties stamp to cover - Wilson 65o Res £8
368. NORTH WEST TPO DOWN/No.2 - D/ring dated 10.1.1995 ties stamp to cover - Wilson 65p Res £8
369. NORTH WEST TPO DOWN - D/ring dated 6.8.1996 ties stamp to cover - Wilson 65r Res £8
370. NORTH WEST TPO DOWN - D/ring dated 9.4.1998 ties stamp to cover - Wilson 65r Res £8
371. RSO SELECTION - Single & double ring cancels from all over the place. Collected for the clarity of marks, although there are a couple of poor ones included. Sold in aid of Bookham Stamp Club [44] Res £20
372. STATION SELECTION - Selection of postcards from the 1800's to 1920's with station cancels. Nothing special, but some better struck marks - sold in aid of Bookham Stamp Club [35] £18
373. TPO SELECTION - Postcards and covers with TPO cancels from the 1800's to about 1990 [17 + 1 front and a loose stamp] Res £5
374. RSO SELECTION - Much better s/ring strikes on postcards from a variety of RSO's [8] Res £4
375. RSO SELECTION - Double ring cancels on postcards [6] Res £3
376. PEMBROKE & TENBY RAILWAY - One newspaper & two newspaper parcel stamps in very good, unused condition [2] Res £8
377. MIDLAND GREAT WESTERN RAILWAY OF IRELAND - The 6d & 9d parcel stamps available for use also on the ATHENRY & TUAM RAILWAY - Both nice unused [2] Res £9
378. NORTH EASTERN RAILWAY - 1½lb, 3lb, 24lb & 48lb LOCAL overprint parcel stamps, used [4] Res £6
379. NORTH EASTERN RAILWAY - 1½lb, 3lb, 6lb & 12lb LOCAL overprint parcel stamps, unused [4] Res £8

380.	NORTH EASTERN RAILWAY - 1½lb LOCAL overprint parcel stamp used with blue crayon cancel	Res £4
381.	NORTH EASTERN RAILWAY - 1d, 2d x 2 & 3d prepaid newspaper parcel stamps, used [4]	Res £6
382.	NORTHAMPTON & BANBURY JUNCTION RAILWAY - One newspaper parcel stamp, unused	Res £4
383.	LM&S - Selection of station allocated parcel stamps 1d to 1/ - , all used [12]	Res £9
384.	LM&S - Further selection of station allocated parcel stamps 1/1d to 4/ - , all used [12]	Res £12
385.	LONDON & NORTH WESTERN RAILWAY - Selection of parcel stamps from 1d to 3/ - , all used [26]	Res £15
386.	LNWR - Selection station allocated parcel stamps, all used from 1d to 7/ - , mostly with better company cancels [29]	Res £15
387.	LSWR - Selection of different types of paid parcel & paid newspaper parcel stamps, all used [10]	Res £7
388.	LONDON TRANSPORT EXECUTIVE - 1d to 10d and extra 5d prepaid newspaper parcel stamps, unused [8]	Res £9
389.	PRESTON & WYRE RAILWAY - Very nice condition ½d to 3d brown prepaid newspaper parcel stamps, unused [4]	Res £6
390.	RHONDDA & SWANSEA BAY RAILWAY - 1d blue on white prepaid newspaper parcel stamp, unused	Res £8
391.	SOUTH EASTERN & CHATHAM RAILWAY - 1d blue [with black controls] and ½d to 4d blue with red controls on prepaid newspaper parcel stamps, unused [7]	Res £6
392.	SOUTH EASTERN & CHATHAM RAILWAY - 1d to 2/ - paid parcel stamps, all used from Godstone, Edenbridge, Waterloo,Sevenoaks, Tubbs Hill; Holborn Viaduct and Gravesend Central [6]	Res £12
393.	SOUTHERN RAILWAY - Paid parcel stamps 1d to £10 from a variety of stations, all used [8]	Res £10
394.	NORTH EASTERN RAILWAY - 1d green, large parcel stamp, unused from the bottom of the sheet	Res £5
395.	NORTH EASTERN RAILWAY - 4d, 5d & 6d parcel stamps, all used [3]	Res £5
396.	NORTH EASTERN RAILWAY - 1d, 4d, 5d & 6d parcel stamps, all used [4]	Res £6
397.	MIDLAND RAILWAY - Orange ½d, 1d & 3d prepaid newspaper parcel stamps, all used [3]	Res £4
398.	MISCELLANEOUS SELECTION OF STATION & TPO Cancels including WHITEHAVEN S.T of 1875 at the 3d rate and cancels of Gloucester, Chester and Maghull stations [4]	Res £5
399.	AUSTRALIA - NSW Government railways 1d, 5d, 9d, 1/ - , 2/ - , 3/ - , 5/ - & 10/ - values, all used from a variety of stations [8]	Res £12
400.	AUSTRALIA - VICTORIAN Railways 9d, 11d & 2/ - parcel stamps, used [3]	Res £15
401.	BELGIUM - BISECTED 6f on 5f50c red parcel stamp tied to document by station cancel on 13.9.1939	Res £10
402.	AUSTRALIA - Three covers with 3 different South Australian TPO cancels [3] 1963 - 64	Res £5
403.	AUSTRALIA - Six covers, all with different NSW TPO cancels, 1964 - 65 [6]	Res £10
404.	SUDAN/SYRIA - 15 black & white photos [8 x 6 inches] [9] and 6 measuring 6½ x 4½ inches, as supplied by the Imperial War Museum showing war damage to stations, track etc., etc. at various named locations. Comes with details of the photos	Res £8
405.	MALAYAN RAILWAYS - SECOND CLASS Military ticket from SINGAPORE TO KLUANG, 1954	Res £5
406.	ISLE OF MAN - Real photo postcard of GROUDLE STATION with people disembarking from a train and walking towards the station	Res £10
407.	WILLS CIGARETTES - Album containing a set of 50 railway engines [retail catalogue value of £50]	Res £15
408.	LNWR unused official postcards [interior of a travelling post office] and Picking up mail bags at speed. The former has a printed advert/details of F GEORGE, Colliery Agent of Birmingham [2]	Res £7
409.	CENTRAL RAILWAY - EDW VII ½d printed postal stationery postcard addressed within London on 31.7.1911 from Mansion House Station	Res £8
410.	GREAT EASTERN RAILWAY - 4 x 2d "four newspapers" stamps from the top row of a sheet, reconstructed to read across the tops of the stamps "ONE HUNDRED STAMPS, SIXTEEN SHILLINGS AND EIGHT PENCE" in green	Res £20

411. GREAT EASTERN RAILWAY - 2d "four newspapers" parcel stamp tied to piece by unframed GER/TRANSFERRED AT/HERTFORD in violet ink Res £7
412. LNER EXCESS FARE TICKET - A 6d excess fare ticket for 3rd class at 6d, issued on 13.2.1936 at STAMFORD HILL Station Res £5
413. WAVENDON/WOBURN SANDS RSO BEDS - Superb strike of the UNDATED s/ring on registration label affixed to longer registered cover addressed to New York with EDW VII 1d x 2 and 2½d x 3 tied by the dated version on 23.9.1907 Res £30
414. N.E.R - Election card depicting the two candidates endorsed by the National Union of Railwaymen for election to the LNER Sectional Council No.2 Res £5
415. "THE TIME TABLE AND ARRANGEMENT OF CARRIAGES [FOR] HER MAJESTY'S JOURNEYS" An Ian Allen limited reproduction of the arrangements made for WINDSOR - HOLYHEAD, April 1900; HOLYHEAD - WINDSOR, April 1900 and BALLATER - EUSTON, October 1901. Res £10
416. CARDIFF & YORK TPO/GOING EAST - S/rings dated 20.8.1918 ties a pair of GEO V ½d values to postcard Res £25
417. CARLISLE AYR R.S.C - S/rings dated 22.5.1935 ties 2 x pairs of GEO V ½d values to Late Fee cover addressed to Cardiff Res £20
418. AYR CARLISLE/R.S.C - S/rings dated 16.12.1935 ties 2 x ½d GEO V values to cover Res £20
419. GALLOWAY TPO/UP DAY - D/rings dated 14.12.1935 ties 2 x ½d GEO V values to cover Res £20
420. HIGHLAND TPO/DOWN - D/rings dated 24.6.1936 ties 2 x 1d GEO V values to cover Res £18
421. GALLOWAY TPO/NIGHT DOWN - D/rings dated 14.12.1935 ties ½d Silver wedding and ½d definitive to cover Res £20
422. MIDLAND TPO/GOING NORTH - S/rings dated 27.10.1934 ties 2 x ½d & a 1d value to cover Res £18
423. LONDON BRIDGE STN S.E.1 - S/rings dated 11.1.1940 ties GEO VI 1½d & 3d values to small registered cover addressed to the USA. Inside is a letter, probably from a stamp dealer. The blank registration has the manuscript LONDON/S.E.31 in black ink Res £30
424. NUNTHORPE STN/MIDDLESBROUGH YKS - D/ring dated 11.6.1946 with index A ties 3d Victory stamp to locally addressed cover Res £8
425. RAVENGLASS & ESKDALE RAILWAY - Complete sheet of the 15p x 6 in a brown/red shade. Catalogued at £100 and showing the constant flaw "Broken Letter A" at 2/2 Res £40
426. BLUEBELL RAILWAY - Official centenary postcard with 3p Machin and 10p deep blue Bluebell value tied by special centenary cancel dated 7.9.1972 - 1st day of use of the RLS Res £20
427. GREAT WESTERN RAILWAY 1985 150 Miniature sheet with 4 x 55p values - imperf [Wilson 3a - 6a] Res £6
428. GREAT LITTLE TRAINS OF WALES - Cover with the block of four of the bilingual 15p/15c definitive on illustrated FDC and cancelled by the Vale of Rheidol "Devil's Bridge" cancel on 4.8.1980 Res £5
429. WELSHPOOL & LLANFAIR LIGHT RAILWAY - Block of four of the different 10p values tied to illustrated FDC by company cancels dated 13.8.1975. Also, there is the 1975 GPO Railway issue tied by WELSHPOOL d/rings dated the same day Res £20
430. LUNDY ISLAND - Gerald King alternative railway letter stamps depicting Queen Victoria in an imperf block of 8 different "stamps" on pink paper without the SPECIMEN cancels as shown in Frank Wilson's catalogue Res £20
431. GEORGE STEPHENSON CENTENARY COMMEMORATION - Illustrated cover addressed within Chesterfield with 2½d Olympic Games value tied by machine cancel dated 12.8.1948 - the 1st day of the exhibition/celebration Res £10
432. "RAIL TICKETS/IN ADVANCE/THROUGH/COOKS" - GEO V 1d meter slogan from London W.1 dated 12.7.1950 on Cooks envelope addressed to Kent Res £5
433. "THIS IS THE AGE OF THE TRAIN" - Do you remember those days; strikes, strikes and more strikes!! Pictorial meter slogan dated 3.8.1981 on BR window envelope Res £5
434. RAIL EXPRESS PARCELS - 1974 "Red Star" parcels label from a parcel carried from Euston to Manchester Piccadilly on 17.7.1974 Res £5

435. BRITISH RAILWAYS 1d x 2, 2d x 3 and single 4d & 1/ - newspaper parcel stamps on small cover addressed to Welshpool, cancelled by the framed MACHYNLLETH cancels on 8.2.1971 during the postal strike Res £10
436. BRITISH RAILWAYS Dual currency 1/ - [10p] pair on cover addressed to Welshpool, cancelled by the MACHYNLLETH cancel dated 15.2.1971, again during the postal strike Res £8
437. RAVENGLASS & ESKDALE RAILWAY/BRITISH RAILWAYS - Illustrated cover addressed to Leighton Buzzard with 10p R&E stamp tied by company cachet on 4.6.1975 and by Barrow - in - Furness slogan cancel on the same day. To continue the journey south by B.R., the dual currency 5d [2p] 3/ - [15p] values and an ordinary 5p newspaper stamp was affixed - not cancelled though Res £6
438. LNER - Longer cover to London with 3d parcel stamp tied by the oval cachet of EDINBURGH WAVERLEY STATION dated 24.3.1935. The added 1½d for postage is similarly tied and both are also tied by the London N machine cancel for the following day Res £50
439. LARGE PART PARCEL Wrapper, formerly containing books addressed to Walthamstow with LMS "CARRIAGE PAID INCLUDING DELIVERY HOME" Label affixed, Ex - London Euston. The address label is dated 22.1.1944 Res £20
440. METROPOLITAN & GREAT CENTRAL JOINT COMMITTEE - 3d RLS A/1323 Control, mint, no gum Ewen No.18 Res £20
441. TRALEE & DINGLE RAILWAY - 2d RLS mounted mint Res £15
442. DONEGAL RAILWAY COMPANY - 2d RLS mounted mint and a bit grubby Res £8
443. BALLYCASTLE RAILWAY - 2d RLS from the top right corner, unused Res £15
444. GREAT WESTERN RAILWAY - 4d RLS Unmounted mint Res £15
445. CLEATOR & WORKINGTON JUNCTION RAILWAY - 2d RLS Unmounted mint from the left of the sheet and showing the stop after Workington variety Res £6
446. MACCLESFIELD COMMITTEE - 2d RLS Imperf at left, mounted mint Res £35
447. WEST LANCASHIRE RAILWAY - Block of four unused 2d RLS from the bottom left of the sheet. One stamp with pinhole [4] Res £25

-----END OF AUCTION LOTS-----

GOOD LUCK WITH YOUR BIDS
MORE IN THE SUMMER AUCTION