



RAILWAY PHILATELIC GROUP

Winter 2023/24 POSTAL AUCTION

A postal auction (open only to RPG members) offering railway letter stamps, newspaper and parcel stamps, preserved railway items, postmarks and ephemera.

ALL BIDS WILL CLOSE AT

12.00 NOON ON WEDNESDAY, 31st JANUARY 2024

PLEASE get Bid Sheets & Cheques in EARLY!

ALL LOTS CAN BE VIEWED AS SCANS ON REQUEST.
THOSE WHO WOULD LIKE PHOTOCOPIES ARE KINDLY
REQUESTED TO PROVIDE A STAMPED AND ADDRESSED
ENVELOPE. ADDITIONALLY, LOTS CAN BE VIEWED AT THE
YORK STAMP FAIR, YORK RACECOURSE ON THE 20th & 21st JAN.

IF BIDDING, PLEASE DO NOT FORGET TO INCLUDE YOUR SIGNED
BLANK CHEQUE. THOSE BIDDING BY EMAIL MUST ALSO SEND A
SIGNED BLANK CHEQUE BY POST TO THE HON. AUCTIONEER:
BILL PIPE 7, RICHARD CLOSE, UPTON POOLE, DORSET, BH16 5PY
Tel: 01202 623300, email: magpiebillpipe@freeuk.com

All lots are a minimum of Res £** as listed on the following pages.

ABOUT THIS AUCTION - PLEASE READ ...

There are 595 Lots.

Lots 1 to 119 (mostly *UK RPS*, and *old & modern RLS*)
can all be viewed online (with text) at:
www.paperheritage.co.uk/rpg/rpg.html

Illustrations for some of the remaining lots are on pages 13 - 16

Images, with text, for Lots 1-119 (mostly UK RPS, and old & modern RLS) are provided on an external website: www.paperheritage.co.uk/rpg/rpg.html

1. **Cambrian Railways / GWR** 1926 Wilson cover, roughly opened, Cambrian Railways 4d with part GWR rectangular h/st (per Lacy-Spencer Appendix 1) violet cancel FRANKTON / G.W.37 & 7 JUNE 1926. On Oswestry - Whitchurch line. RARE. Res. £220.00
2. **GWR LS1** on slightly grubby 1892 cover to Oxford Street, London. QV 1d and RLS stamps cancelled 'P14 PADDINGTON' duplex MR 24 (18)92. 'London W' cds on back. Res. £85.00
3. **GWR LS2** : foxed, roughly opened 1897 cover from Sir T. Fowler (who lived at CORSHAM) to Chippenham, franked 2 x 1897 Jubilee issue, 'CHIPPENHAM 191' duplex cancel. JY 15 97. Res. £48.00
4. **GWR LS4** on roughly opened (torn away at top) 1902 EXPRESS cover cancelled at CHELTENHAM, franked 4 x EdVII 1d. JY 15 97. m/s 'Express from P/Office' and 'To be posted en route' instructions. Royal Mail oval EXPRESS h/st, RLS cancel is str./l. CHELTENHAM in Violet, stamp partly folded onto back of envelope. A most interesting cover. Res. £140.00
5. **GWR LS4** on neat Ewen cover from ADDERBURY to Norwood, a stain clear of stamps, m/s notation and RLS both dated Feb 10 1910 but RLS and EDVII 1d both tied by PADDINGTON machine cancel Feb 9 1910 (date error by GWR clerk is the more likely). Adderbury on Banbury-Chipping Norton / Kingham line. Res. £120.00
6. **GWR LS1** Selection of 3 x LS1 : ~~ On piece with QV 1d FALMOUTH cancel, RLS with m/s 2/3/91 in black pen; ~~ Single with CHELTENHAM OC 9 91 cancel, violet rly h/st cannot fully read --ANACE or similar; ~~ Single with PADDINGTON JA 2 92 cancel Res. £12.00
7. **GWR LS1** single with full strike of 'MARY TAVEY / STATION / G.W.RY' oval. Res. £20.00
8. **GWR LS1** with most unusual m/s cancel : Camborne / to / Truro / 9/12/91 , part hinge still attached, very fine. Res. £36.00
9. **GWR LS2** four singles, royal mail cancels CREWE STATION cds (pale); hooded LONDON E.C.; SWINDON cds; P22 part duplex. Res. £8.50
10. **GWR LS6** m/m single with variety hollowed-out bottom left pillar. Res. £11.00

11. **GWR LS6a** used, surface rub, one of the GREAT RARITIES of GB RLS, stamp Imperf vertically, torn roughly out of its sheet by a clerk but with exceptionally wide margins, as necessary to prove this stamp's status. It seems unlikely that a more convincing example exists. Control 29906; Res. £280.00
12. **GWR LS 4** m/m horiz. pair, foxing, wide imperf right margin, left stamp with broken bottom left pillar. Also a single, used, LS3, with dot between 'W' and 'A' in smaller 'RAILWAY'. (3 stamps) Res. £14.00
13. **GWR LS9** (Perf 11) used on piece with PADDINGTON GWR cancel; also a 4d (LS11) with missing bottom left part of stamp (clear of design) with boxed LELANT cancel (St Ives line) (2) Res. £13.00
14. **Manchester & Milford Railway LS3** m/m with double variety: breaks / bends on both top & bottom frame lines. Control 2351. Res. £10.00
15. **Isle of Wight Central Railway Rouletted 2d** m/m with minor thin. Res. £14.00
16. **Isle of Wight Railway LS1** m/m with flaw (white spot) in 'S' of 'LETTERS'. Res. £16.00
17. **North London Railway LS5** used top right corner pair, Controls 4073 / 4074. Faint BROAD STREET cancel, hinges holding pair together, significant damage to top frame on right stamp. Res. £42.00
18. **L.N.E.R. LS7** 4d used with large corner chunk missing (most of design present), unusual in having scarce cds: SILVERTOWN / L.N.E.R. (ex GER, now a DLR station). Res. £9.00
19. **North London Railway LS3** 2d used (Feb 1910) with both CANONBURY NLR and Royal Mail cds on stamp (possibly Norwood). Control 2619. Res. £12.00
20. **London Chatham & Dover Railway LS5** 2d used with 'HERNE BAY / STATION / L C & D R' cancellation in Black. Thins plus a fault in bottom margin but a scarce stamp. Res. £28.00
21. **L.S.W.R LS10** (Perf 14½) with sans-serif FRATTON str/l cancel in Black; another 2d (Perf 10½) with serifed FRATTON in Violet + an SR luggage label for same station (3). Res. £14.00
22. **LBSCR LS 11** (Perf 11½) with very worn impression in top left and bottom left corners. A striking example, m/m. Res. £18.00
23. **LBSCR LS 13** m/m horizontal pair from top left corner. Fine and Fresh. Res. £13.00

24. **Manchester South Junc & Altrincham Rly LS13** m/m Control A449 m/s '3' on 2d in Red Ink, with variety: The usual small '+' between 'WAY.' and 'FEE' is missing . Res. £28.00
25. **North Eastern Railway LS42** : A strange contrived m/m 2d 'Block/9' (with 7 controls in range 150348-150358, plus 150706/07 to make up the block). Major damage (large hole) on 150357; special interest is stamp 150706 which has dot variety '---ANCE OF.SINGLE'. Res. £24.00
26. **North Eastern Railway LS42** Mint no gum 4d Block/6 (2x3) (controls 534776-534783). Bottom right stamp with variety 'No stop after (small) RAILWAY' Res. £22.00
27. **North Eastern Railway LS43** Mint no gum vertical strip/3 (151333/34/35), damage to bottom stamp, top stamp thinned in margin with variety top line of perfs double (all blind). Not seen before. Res. £16.00
28. **North Eastern Railway LS91** Used!! Control 295282, minor blemishes, cancelled with cross in ink and part Royal Mail cds starting SHE.... Unpriced used in LS and very scarce thus. Res. £38.00
29. **North Eastern Railway LS116** A scarce issue in a *pseudo* re-joined pair, Controls 370741/42, m/m, creases and tired. Res. £11.00
30. **Midland & Great Northern Joint Railways LS1** Used, pen-cancel, very fine. Scarce. Res. £32.00
31. **North London Railway LS4** Used small pin hole, fine HIGHBURY oval, stamp with clear example of the broken first 'E' in 'FEE'. Very attractive. Control 3022 Res. £22.00
32. **North London Railway LS3** Mint no gum horiz. pair, left stamp nicked at foot but an excellent example of a 'Cracked Stone' flaw, Control 2534 (with 2535). Scarce. Res. £46.00
33. **North Wales & Liverpool Rly Com.** 2d Deep Green, presumed to be LS1, used with violet Committee cancel. Partly still on paper, imperf at foot. Scarce. Res. £38.00
34. **Oldham, Ashton & Guide Bridge Rly LS1** m/m from bottom left corner. Extensive thinning, but this is not visible from front which has a fine appearance. Res. £24.00

35. **So West & Mid / Som & Dor Joint LS4** used with two partial MIDSOMER NORTON & WELTON str/line cancels in violet. One reads MIDSOMER N, the other N & WELTON. Control A630, lovely cancel combination. Res. £12.00
36. **So West & Mid / Som & Dor Joint LS 9** (A5221) m/m and LS 10 (A6047), small blemishes, m/m (2) Res. £18.00
37. **So West & Mid / Som & Dor Joint LS 11b** Control A5773, 2d m/m with diagonal MANUSCRIPT SURCHARGE 'Plus / 50%.' in grey-black ink. Rare. Res. £70.00
38. **West Lancashire Railway LS 1** m/m horizontal pair from bottom right corner, Controls 707 m/m, corner stamp 708 u/m, scarce thus. Res. £24.00
39. **Wrexham Mold & Connah's Quay Ry. LS1** m/m top left corner example, tiny thin spot, Control 913. Uncommon. Res. £10.00
40. **Cambrian Railways LS7** used, some foxed perfs, with two str/line FAIRBOURNE cancels in Violet, also part Royal Mail cds. Used examples such as this are scarce. Res. £12.00
41. **Cambrian Railways LS8** Two examples, one fine m/m with full design offset on gum; the other mint, stuck to piece with large green ink spot flaw under 2nd 'A' of 'RAILWAYS' at foot. (2) Res. £22.00
42. **Cambrian Railways 3d LS9** left marginal m/m with ink runs affecting top 'N' and 'FE' of 'FEE' Res. £12.00
43. **Cambrian Railways 3d LS9** m/m with eye-catching right-side frame damage. Res. £18.00
44. **Cambrian Railways 4d LS10** mint, stuck to piece, top right corner example. Very fresh. Res. £36.00
45. **East & West Junction Railway LS3** mixed m/m u/m bottom margin strip/4 (Controls 4212/15/18/21), first stamp minor thin. All four stamps with some offset of design, strong on 4th stamp. Fine & Fresh. Res. £20.00
46. **Eastern & Midlands Railway 2d HANDSTAMPED MGN Jt** u/m. This appears to be an unlisted provisional issue. Res. £45.00
47. **Great Central Railway 2d** : LS1 m/m with flaw in NE corner shading; LS2 m/m, small thin, variety 'stop' before GREAT (2) Res. £18.00
48. **Furness Railway** : 2d LS1 or LS2 grubby used, LS4a used with crease (Control 78) & LS5 (Control 3114) used with small thin, all with m/s cancels. LS5 tiny part Royal Mail cds as well (3) Res. £18.00

49. **Great Central & Midland Joint Committee 2d**, nick at foot, with June 1918 BIRCH VALE violet cancel. Scarce. Res. £30.00
50. **Great Central & Midland Joint Committee 4d, LS7**, m/m right margin horiz. pair, one with pin holes. Res. £15.00
51. **Great Central Railway 2d** on small piece with EdVII 1d, all tied by LONDON N.W. cancel. Res. £18.00
52. **Great Central & North Staffs 2d** right marginal horiz. pair, mint no gum, LS1 Res. £14.00
53. **London & North-Western Railway 2d LS7** (216515) on piece with Ed VII 1d, both stamps with diamond-shaped EUSTON 26-2-07 railway cancel, the EdVII also with Royal Mail LANCASTER FE 27 07 cancel. Very attractive. Res. £38.00
54. **London & North-Western Railway 2d LS7** (212839). A most unusual piece with Ed VII 1d and RLS tied by machine cancel bars, the RLS with both a LNWR violet LLANDUDNO cancel and a red handstamp (unboxed) including the words BANGOR N.W., possibly applied at the originating station of the letter? m/s (it appears to have word 'post' cut off) 'at Euston today'. Res. £50.00
55. **Cambrian Railways 2d LS1** block/6 (2x3), mint, stuck to piece. Odd crease and a stain. All three (marginal) stamps at right have the top-right corner frame-line break variety. Res. £42.00
56. **L&SWR 3d+1d Provisional RLS** cancel MORTEHOE on piece of a GV 2d P.S. Env., cancelled 29 JU 21 at BARNSTAPLE with m/s routing 'Rail to Barnstaple'. The RLS is similar to LS51g, black ink surcharge reads: 'Sur / Charge / 1, and m/s date in pencil 29 / (illegible) / 21. A rare stamp, possibly unique both in method of surcharge and station of origin. Res. £160.00
57. **Manchester, Sheffield & Lincolnshire Railway 2d LS10**, pen-cancelled with a cross, on OHMS part envelope with 2 x QV 1d OFFICIAL stamps with SHEFFIELD Royal Mail cancels AU 10 97. Combination of RLS and OFFICIALS is scarce, very scarce with a pair of them (2d letter rate). Res. £34.00
58. **L&SWR 3d + 1d Provisional LS51g**, m/s surcharge in RED reads 'Surcharged / one / Penny', stamp with dated (but date hard-to-read) WATERLOO RLS cancel in Violet. Right marginal stamp. Very scarce. Res. £60.00

- 59.**L&SWR 3d + 1d Provisional LS51g**, m/s surcharge in Violet reads 'Surcharge / 1D', plus illegible violet railway cds and P.O. wavy lines. SE-corner stamp. Scarce. Res. £44.00
- 60.**L&SWR 2d + 1d Provisional LS48a**, m/s surcharge in Black 'Surcharge / 1D', m/m, some foxing. Res. £28.00
- 61.**Metropolitan Railway 20th Issue** envelope with EDVII 1d, cancelled LONDON MY 12 06 (12.30 pm), OXFORD arrival on back, 6.45pm same day, the RLS cancelled with black ink cross. Res. £120.00
- 62.**Great Central & N. Staffs Ry Com. LS3**, m/s 3D/2d in Black Ink on fine Wilson cover, POYNTON RLS oval cancel in Violet, P.O. 1½d rate, Manchester cancel, wavy lines tying all the stamps. A very rare stamp in used condition, perhaps unique. Res. £160.00
- 63.**Great Central & N. Staffs Ry Com. LS 8**, mint 4d sheet/12 (3x4), 10 stamps u/m, 2 m/m, unfolded, pristine example. Res. £120.00
- 64.**Great Central & N. Staffs Ry Com. LS 8** on superb Wilson cover. 2d postage stamps (GV 1d & 2x½d) with full violet cancel 'ROSE HILL (MARPLE) / G.C. & N.S. RLY. CTE' (and no P.O.cancel), the RLS cancelled by both the same RLS cancel, date stamp 16 MAY 1922 and MANCHESTER May 17th P.O. cds. Env. with m/s instruction 'Post on arrival at London Road'. Outstanding, exhibition quality, item. Res. £180.00
- 65.**Great Central & N. Staffs Ry Com. 3d, LS5** m/m, Imperf at top, rough perfs at right, a very scarce, under-catalogued stamp without surcharge. Res. £48.00
- 66.**Great Central & N. Staffs Ry Com. : 4d/3d (LS7) & 4d top right corner (LS8)**, both m/m (2). Res. £26.00
- 67.**Great Eastern Railway : 2d** on small piece with EdVII 1d, both stamps with LONDON E.C. hooded cancel (MY 10 05), the RLS also with violet RLS cancel, WEST GREEN (on the Palace Gates line, May 9). Res. £24.00
- 68.**Great Northern Railway 2d, LS3**, used, blue bar cancels and somewhat faint Violet h/st WAINFLEET (on Skegness line). GNR station cancels are very scarce. Res. £40.00
- 69.**Caledonian Railway 2d, LS2**, in a mint horiz. pair from top of sheet, left stamp m/m, right stamp u/m. Rare multiple. Res. £68.00

70. **Dumbarton & Balloch Joint Line 4d, LS5**, used on small piece, fine clear 'BALLOCH / 4 JUL 1922' diamond cancel in Violet. Very fine. Res. £60.00
71. **Highland Railway 2d** (unidentified issue) with fine and complete DAVA STATION oval cancel in Black (Aviemore-Forres line). Res. £26.00
72. **LMS LNE Dundee & Arbroath Joint Newspaper 3/4d, 3d, 4d**, all on orange paper, mint no gum (3). Res. £18.00
73. **LMS LNE Dundee & Arbroath Joint Newspaper 1d** Mint No Gum on Dark Red paper. Res. £10.00
74. **Glasgow, Barrhead & Kilmarnock Joint Ry 2d, LS 5**, from bottom right corner, used, pin hole & some foxing, major flaw through bottom right pillar. Res. £14.00
75. **Glasgow, Barrhead & Kilmarnock Joint Ry 2d**, Top marginal LS 5, and a bottom marginal (with selvedge) LS6, both m/m (2). Res. £10.00
76. **Great North of Scotland Railway 4d/3d, LS 4** m/m vertical pair (with lower imperf margin); minor blemishes, a nice multiple. Res. £15.00
77. **North British Railway 2d, LS 4?**, used on piece with QV 1d, both stamps LONDON N. MY 14 00 cancels, all tied together and to small piece. Res. £27.00
78. **North British Railway 4d, LS 17**, m/m horiz. pair from top right corner. PALE APPLE-GREEN shade. (see also next lot). Res. £17.00
79. **North British Railway 4d, LS 17**, m/m horiz. pair from top left corner, one stamp with pin holes. LIGHT GREEN shade. (see also previous lot). Res. £16.00
80. **LNER : North British Section 4d**, m/m vert. pair from top of sheet. YELLOWISH-GREEN shade Res. £15.00
81. **LNER : North British Section 4d**, from right margin in the BLUE-GREEN shade, variety : flaw at left of '4', on a paper crease that may be the result of the crease being present pre-printing? Probably unique, if so. Res. £18.00
82. **North British Railway 2d, Perf 11, probably LS11**, on cover from MALLAIG to Wood Green, London. RLS with two Violet MALLAIG str/line cancels; 2 x GV ½d & RLS all cancelled by three GLASGOW cds, AU 27 12. A very desirable cover. Res. £170.00

83. **Glasgow & SW Railway Ewen Cover**, franked RLS 2d, Perf 12, LS3 or LS4 and EdVII 1d, both stamps cancelled both with str/line DARVEL in Violet and LONDON NW 15 duplex JU 28 05. Small tear to top of envelope, clear of stamps and writing. b/st London SE (same date); a splendid G&SWR cover. Res. £180.00
84. **LB&SCR Parcel Stamp** (1/3 Blue) with a POLEGATE letter stamp cancel. Scarce. Res. £18.00
85. **LB&SCR Parcel Stamp** (1/9 Red) with a WILLOW WALK June 1916 cancel. Res. £8.00
86. **LB&SCR : FOUR Blue Parcel Stamps** used: 8d VICTORIA; 9d HOVE; 1/- VICTORIA; 1/3 NORWOOD JUNCTION. Res. £14.00
87. **LB&SCR : Three Parcel Stamps** in the scarcer BLACK colour, used: 1/- CRYSTAL PALACE; 1/3 WORTHING; 2/6 VICTORIA (3). Res. £24.00
88. **Nene Valley Railway #57-60a** (TPO sorting van) Uncut joined pair of Imperf PROOF sheetlets separated by a margin, with printers' markings, u/m. Res. £26.00
89. **Nene Valley Railway #56a** (Santa Specials) Uncut Imperf PROOF sheetlet/9 with printers' colour-check markings, u/m, heavy diagonal crease at bottom left. Res. £14.00
90. **Nene Valley Railway #57-60a** (TPO sorting van) group of 3 PROOF printers' colour sheets, all Imperf u/m, one with MISSING BLACK, one with BLACK ONLY, one in Issued Colours. All 3 with marginal markings for cutting purposes. Res. £66.00
91. **Nene Valley Railway #56a** (Santa Specials) group of 3 PROOF printers' colour sheets, all Imperf u/m, one with MISSING BLACK, one BLACK ONLY, one in Issued Colours. All with printers' cutting markings. Res. £58.00
92. **Nene Valley Railway #44a** set of 7 PROOF printers' colour sheets, all Imperf u/m. The 4 primary colours separately (Cyan, Magenta, Yellow, Black), then two sheets with a partial combination of primary colours and the finished stamp, 7 sheets/9 in all. Rare. Res. £90.00
93. **MULTI-COMPOSITE Nene Valley & Bluebell Railway** Imperf PROOF sheet u/m, lightly folded horizontally across centre between the two panes. Top pane is Nene Valley sheet/9 with three each Mayflower, 5MT and Polish Loco, bottom pane is Bluebell Railway Blackmore Vale issue sheet/9 (8 + label). Rare 2-railway proof. Res. £60.00

94. **Bluebell Railway** Two sheets: #2 u/m sheet/10, some perf splitting; #10 (20p/10p) u/m sheet/10. Res. £13.00
95. **Bluebell Railway #3** sheet/10, small paper adherence to gum in one margin. The 15p/10p has the serifed figure '1' in the narrow setting. Very scarce u/m sheet. Res. £70.00
96. **G.C.R. Parcel** 1st Issue 6d thinned, Nottingham Victoria 10 JAN 1912 cancel & 1/- missing bottom left corner, used Grimsby Town. Also 2nd Design 9d on yellowish-white paper SHEFFIELD, Vic. Used (3) Res. £18.00
97. **G.C.R. 4d Dark Blue PERF Newspaper** stamp used horiz. pair on paper (small figures 48085/86), plus a MINT (with gum, small thin) **6d** Newspaper stamp in the Light Blue, perforated, large figures 4110 (3) Res. £9.00
98. **G.C.R. Set/6 Blue used Newspaper** stamps, ½d, 1d, 2d, 3d, 4d, 6d, ALL ROULETTED. 1d & 6d Small Numerals, others Large (6) Res. £18.00
99. **G.C.R. PERFORATED Blue Newspaper** stamps, used, four values : 1d, 2d, 3d, 4d. The 4d has Small Numerals, rest Large. (4) Res. £8.00
100. **L.M.S. Scotland Eight Parcel** stamps (red), all from Scottish stations: 3d Stirling; 9d (deep orange) Glasg. Buch. St., 10d Kilm'k; 11d Edinb; 11d Dumfries; 2/- Stirling; 2/- & 4/- Glasg. St. Enoch. Used(8) Res. £12.00
101. **L.M.S. Bute & Arran** Four Parcel stamps, two each from Bute & Isle of Arran : Rothesay Pier 1/- Orange (corner fault); 2/- Rothesay Orange (small nick); 3d Kildonan (dull red, used 1937); 2/6 Pale Rose Ardrossan with BRODICK h/st. Used (4) Res. £10.00
102. **M & G.N. Joint Com. Newspaper** stamps (4), 1d 3d & 8d No Gum, 2d m/m Res. £12.00
103. **Southern Railway Poster Stamps** Rarely seen stamps (one with pin holes) on page, from 23 Feb 1935 Mapping 'issue' in Children's Newspaper (5, m/m): Seaford; Seaton, Swanage, Weymouth, Whitstable. Also page of mini railway poster cut-outs, various rlys(9) Res. £14.00

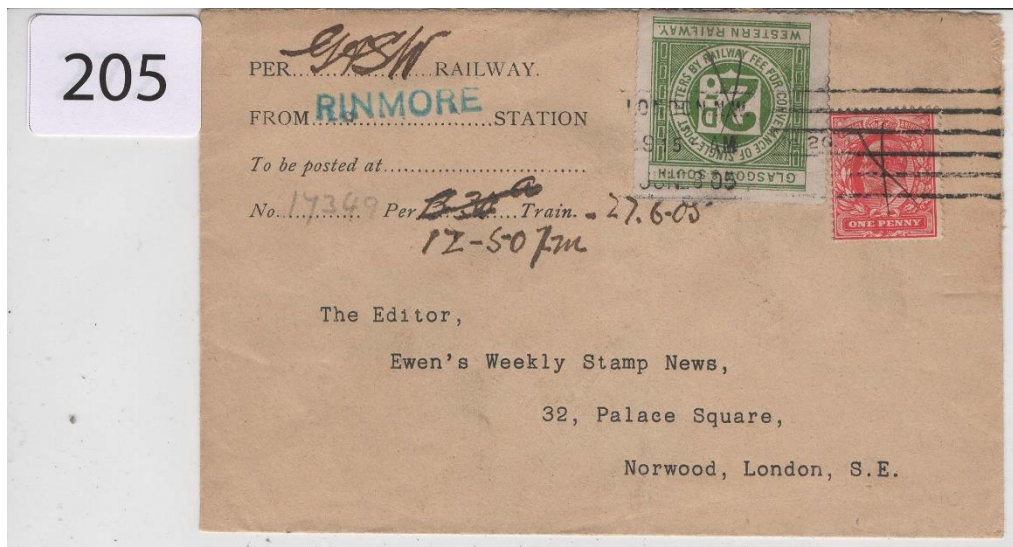
104. **SR, GWR, LMS etc 1936 Poster Stamps** on 4 pages, mixed no gum & m/m, from 28 Mar-30 May 1936 Children's Newspaper 'issues', stamps : Bexhill, York, Blackpool, Southend, Buxton, Clacton, Lowestoft, Gt. Yarm., Rhyl, Aberystwyth, Folkestone, Hastings, Ramsgate, St. Ives, Skegness, Bridlington, Felixstowe, Eastbourne, Newquay, Colwyn Bay, Fleetwood, Denby, Southsea, Deal, Morecambe, Hereford, Torquay, Poole, Chester (29). Attractive Group. Res. £38.00
105. **Romney Hythe & Dymchurch Rly #10a** (20p/15p 'Hurricane' black of surcharge omitted) in a full u/m, unfolded sheet of 25, probably unique. 1996 Oakley (40 x £25 = £1000). Plate 1B. Res. £280.00
106. **RH&DR #9** (20p/10p 'Winston Churchill' First Ptg.) in a full u/m, unfolded sheet of 25, surcharge in COPPER (see next lot). Plate 1B. Res. £95.00
107. **RH&DR #9b** (20p/10p 'Winston Churchill' Second Ptg.) in a full u/m, unfolded sheet of 25, surcharge in BRASS (see previous lot). Plate 1B. The Copper surcharge has a reddish-tinge, absent from this 'Brass' ptg. Res. £90.00
108. **RH&DR #13-16**, TWO sheets/12, one imperforate, Plate AAB. Second sheet is an incomplete proof with Roulettes misplaced 6mms down AND 7mms left, no Plate Number, inscriptions on stamps and sheet margins incomplete. (2 sheets/12) Mint. Res. £42.00
109. **Ffestiniog Rly #16a** - the 'impossible' sheet/12, hinged together on a card. Since most #16a (vermilion surch.) were used on fdc's, mint copies are rarely seen. It is unlikely a complete mint sheet of #16a was ever sold. Someone has soaked stamps off 12 fdc & 'reconstructed' a sheet/12 within sheet margin 02046 (from a 16, not 16a, sheet). Different! (12 x #16a from fdc) Res. £48.00
110. **Ffestiniog Rly COLLECTION** : 10 Different sheets/12, all u/m : #1, 1a, 1b, 2, 2b, 3, 3b, 4, 5, 6. Res. £80.00
111. **Welshpool & Llanfair Rly #1-4** in complete u/m, unfolded sheet/12 stamps (3 sets) Res. £38.00
112. **Welshpool & Llanfair Rly #6-9** in complete u/m, once folded sheet/12 stamps (3 sets). Uncommon. Res. £42.00
113. **Ravenglass & Eskdale Rly #10** (Silver Jubilee) in u/m sheet/12, unfolded. Res. £14.00
114. **Ravenglass & Eskdale Rly #11** (Silver Jubilee, surcharged) in u/m sheet/12, once folded. Res. £16.00

115. **Welshpool & Llanfair Rly #17** in complete u/m sheet/12 stamps with VARIETY odd-numbered sheet (this is sheet 111) with Welsh rather than English inscriptions. Scarce thus. Res. £16.00
116. **Talylyn Rly #35** (1969 Investiture) PROOF sheet/10 in only two colours, only Cyan and Magenta, u/m, Plate 1A, pin holes in top margin area. Scarce. Res. £80.00
117. **West Somerset Rly #3/4** : SPECIMEN sheet/10, postmaster signed (No. 5 of 30) + Colour Proof Pair Imperf + Colour Trial Pair in Black Imperf (14). All u/m - superb group. Res. £38.00
118. **GB : International Tramways & Light Railways Exhbn., London 1902** : Exceptional range of 7 poster / exhibitor stamps. The general stamp (2) in Vermilion and in Carmine; the Exhibitor stamp but without 'Stand' attribution (sample); Individual Exhibitor Stamps (4) for Stands 9, 59, 85 (small rub), 100. Fresh m/m or no gum, a very scarce group. Res. £32.00
119. **Railway Pot-Pourri** : Modern poster stamps trams / trains Le Mans & La Sarthe; French, Algerian (with 1Fr tete-beche pair mng), Danish, GB & Queensland rly parcel stamps, France 1937 poster stamps set/4, thematics incl. Algerian booklet, Trieste B UPU used set/2 etc. (78 + 1 m/s + 1 fdc). Res. £24.00

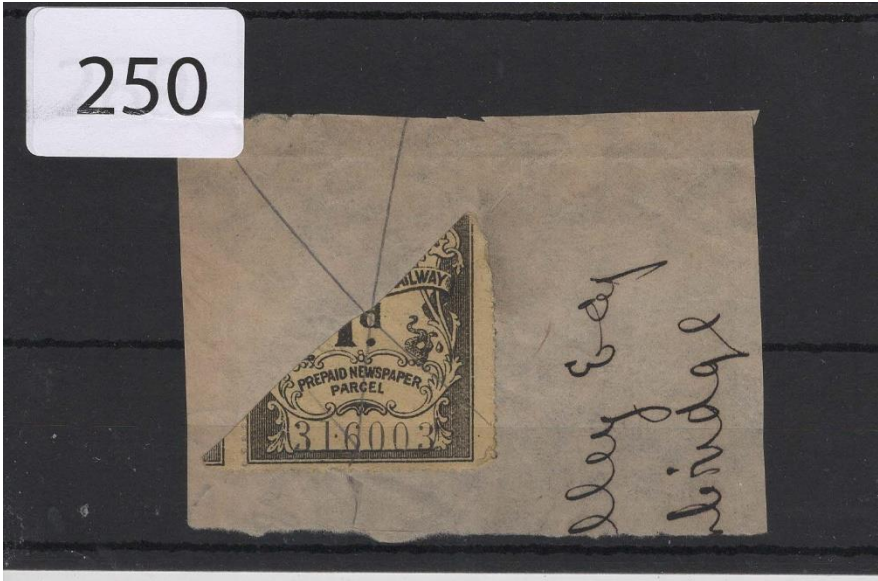
(End of lots with externally-hosted images)

The following illustrations all relate
to Lots 120 onwards





250



327



550

Miss G. J. Smith
MISS-SENT-TO
SOUTHAMPTON-STATION
Miss Lee House
Kingston on Thames
Surrey



551

MISS-SENT-TO
BRISTOL-STATION
Mr G. J. Smith
Walton House
Walton
near Peterborough
Northamptonshire



120. GREAT EASTERN RAILWAY-Four pieces, each with a 2d RLS & EDW VII 1d value used at GRIMSBY, DONCASTER, BARNSELEY & MANCHESTER during June 1905 [4] Res £12
121. MIDLAND & GREAT NORTHERN JOINT COMMITTEE-4d on 3d on 2d RLS in unused condition-scarce stamp-few toned perfs at right Res £22
122. LONDON & NORTH EASTERN RAILWAY NORTH EAST SECTION-Top lefthand corner marginal pair of the 4d RLS in unused condition Res £12
123. DUNDALK, NEWRY & GREENORE RAILWAY-2d RLS with control 543 in unused condition Res £15
124. WIRRAL RAILWAY-LARGE TYPE 2d RLS from the bottom right corner of the sheet in unused condition Res £15
125. WIRRAL RAILWAY-Very uncommon [under-rated] 4d on 2d RLS from the top right of the sheet in mint condition - **see illustration on page 13** Res £25
126. COUNTY DONEGAL RAILWAYS JOINT COMMITTEE-2d RLS from left of sheet-unused Res £8
127. GREAT CENTRAL RAILWAY-Pair of the 2d RLS from the 1st issue of 1897 [2] Res £9
128. GREAT CENTRAL & NORTH STAFFS RAILWAY-4d on 2d final issue with a blue-green surcharge 4 applied 1925 Res £22
129. GREAT CENTRAL & NORTH STAFFS RAILWAY-Pair of the 8th printing 4d values of 1920-unused [2] Res £10
130. GREAT CENTRAL & NORTH STAFFS RAILWAY-Vertical pair of the 4d on 3d values showing the two different styles of 4 surcharge-unused [2] Res £9
131. PORT TALBOT RLY & DOCKS Co.-Red overprint on 4d GWR RLS in unused condition-only 240 issued in 1920 Res £25
132. PORT TALBOT RLY & DOCKS Co.-Mint 2d RLS with red overprint on GWR 2d and with control 167605 in mint condition-only 240 issued 1919 Res £25
133. PORT TALBOT RAILWAY AND DOCKS Co.-Two of the 2d RLS from the 1st printing of Feb 1901-one is better than the other! [2] Res £9

134. LONDON & NORTH EASTERN RAILWAY-4d RLS from the June 1925 7th printing-unused Res £8
135. LONDON & NORTH EASTERN RAILWAY NORTH BRITISH SECTION-4d RLS from the bottom of the sheet-unused Res £8
136. LONDON & NORTH EASTERN RAILWAY-4d RLS from the bottom of the sheet EX-7th printing of 1924 with control 556755 Res £8
137. L.N.E.R PROVISIONAL OVERPRINT [Typed lettering] in violet ink on 4d North British Railway RLS-unused Res £22
138. METROPOLITAN & GREAT CENTRAL JOINT COMMITTEE-3d RLS from the top left of the pane in unused condition and with control A/1366 Res £12
139. METROPOLITAN & GREAT CENTRAL JOINT COMMITTEE-2d blue RLS with control 3999 from the 1907 issue Res £8
140. METROPOLITAN & GREAT CENTRAL RAILWAY JOINT COMMITTEE-Imperf gummed proof on thin paper and without control-scarce item - **see illustration on page 13** Res £35
141. OLDHAM, ASHTON & GUIDE BRIDGE RAILWAY-2d RLS from the top right of a sheet of the Nov 1898 third printing-unused Res £35
142. OLDHAM, ASHTON & GUIDE BRIDGE RAILWAY-2d RLS from the right of the sheet 1st issue Res £40
143. GREAT CENTRAL & MIDLAND JOINT COMMITTEE-Vertical unused pair of the 3d RLS showing the two different styles of the 4 overprint surcharges [2] Res £9
144. DONEGAL RAILWAY-Two RLS from the 1st & 4th printings in unused condition [2] Res £12
145. ISLE OF WIGHT CENTRAL RAILWAY-2d RLS, cancelled by a small ink cross-see illustration Res £25
146. CAVAN & LEITRIM RAILWAY-Block of four in mint condition from the top left of the sheet from the 1st printing of 1901[4] Res £20
147. NORTH EASTERN RAILWAY-IMPERF PAIR of the 2d RLS without control numbers in mint condition [2] - **see illustration on page 13** Res £40
148. ISLE OF WIGHT RAILWAY-Framed 3d on 2d RLS in unused condition-nice!! Res £30

149. METROPOLITAN & GREAT CENTRAL RAILWAY JOINT COMMITTEE-IMPERF Proof in mint condition Res £28
150. METROPOLITAN RAILWAY-4d RLS with manuscript 3d surcharge in black [control 1289] Res £22
151. METROPOLITAN RAILWAY-Marginal block of 6 x 2d RLS with controls from 21076 to 21084 in mint condition [6] Res £18
152. MIXTURE-Unused RLS from GC, M&GN, MR, WIGAN JUNCTION, MANCHESTER & MILFORD, OLDAM, ASHTON & GUIDE BRIDGE, NER, MARYPORT & CARLISLEE ETC [10] Res £12
153. MIXTURE-Used examples from NORTH STAFFS, MR, H&B, LD&ECR, NER, L&Y and SMR [7] Res £12
154. GREAT CENTRAL RAILWAY-Reconstructed pane from the 4th printing [dark green] type 2, number 2 pane [12] Res £22
155. LONDON & NORTH EASTERN RAILWAY NORTH BRITISH SECTION-4d RLS from the top left of sheet in unused condition Res £8
156. MIXTURE-Used selection from Scottish companies with CR, D&A, GSWR, GNOS, HR, NBR & G,B & K RLY [7] Res£12
157. GREAT CENTRAL RAILWAY-Reconstructed pane of the 4d RLS from the 1st 4d printing-includes pairs & strips [12] Res £15
158. LONDON & NORTH WESTERN RAILWAY-2d RLS with uncommon GUARD CANCEL of T BLUNT/EUSTON in violet Res £12
159. NORTH EASTERN RAILWAY-2d RLS with uncommon GUARD CANCEL of W WETHERIL/N.E YORK in violet ink Res £15
160. NORTH WALES & LIVERPOOL RAILWAY-Used 2d RLS from the 1st issue tied to piece by parallel line ink cancels Res £40
161. NORTH WALES & LIVERPOOL RAILWAY-Unused pair from the bottom left of the sheet and from the 2nd printing [2] Res £60
162. EAST & WEST JUNCTION RAILWAY-Complete sheet of 12 x 2d red on yellow RLS with controls 4560-4571 in mint condition [12] Res £30
163. NORTH EASTERN RAILWAY-Corner bottom left block of four of the 2d 85th issue of October 1910 unmounted mint [4] Res £10
164. NORTH EASTERN RAILWAY-Corner top right block of 4 x 2d RLS from the 86th issue of Dec 1907-top 2 stamps m/mint [4] Res £10

165. NORTH EASTERN RAILWAY-Top right corner block of 4 x 2d RLS from the 87th issue of February 1908 unmounted mint [4] Res £10
166. NORTH EASTERN RAILWAY-Block of 4 x 2d RLS from the right of the sheet of the May 1908 88th printing-one stamp mounted [4] Res £20
167. NORTH EASTERN RAILWAY-Top right corner block of 4 x 2d RLS from the 89th printing of July 1908 [4] Res £20
168. NORTH EASTERN RAILWAY-Top left corner block of 4 x 2d RLS from the 92nd printing of February 1909-unmounted mint [4] Res £15
169. NORTH EASTERN RAILWAY-Top left corner block of 4 x 2d RLS from the 93rd printing of April 1909-m/mint [4] Res £12
170. NORTH EASTERN RAILWAY-Top left corner block of 4 x 2d RLS from the 94th printing of June 1909-m/mint [4] Res £12
171. NORTH EASTERN RAILWAY-Right side block of 4 x 2d RLS from the 97th printing of December 1909-unmounted mint [4] Res £20
172. NORTH EASTERN RAILWAY-Top right corner block of 4 x 2d RLS from the 100th printing of June 1910-unmounted mint [4] Res £15
173. NORTH EASTERN RAILWAY-Block of 4 x 2d RLS from the 104th printing of March 1911-unmounted mint [4] Res £15
174. NORTH EASTERN RAILWAY-Top right corner block of 4 x 2d RLS from the 112th printing of 1912 [4] Res £50
175. NORTH EASTERN RAILWAY-Right side block of 4 x 3d on 2d RLS from the 147th printing of 1920-u/m mint [4] - **see illustration on page 14** Res £25
176. NORTH EASTERN RAILWAY-Single smaller overprint 3d surcharge on 2d RLS from the 149th printing of 1920 with a complete offset on the back-unmounted mint Res £20
177. NORTH EASTERN RAILWAY-Single 2d RLS with a pencil 4d surcharge on control 274536 from issue 151b mounted mint Res £8
178. NORTH EASTERN RAILWAY-UNLISTED 3d on manuscript 4d on 2d RLS with control 473772 unmounted mint - **see illustration on page 14** Res £30
179. NORTH EASTERN RAILWAY-Bottom right corner block of 4 x 4d RLS from the 162nd issue-m/mint-one hinge centrally [4] Res £20

180. NORTH EASTERN RAILWAY-Bottom right corner block of 4 x 4d RLS from the 166th printing-two stamps lightly m/mint Res £40
181. MANCHESTER, SOUTH JUNCTION & ALTRINCHAM RAILWAY-2d RLS with control A912 from the 12th issue of 1919-1/mounted Res £12
182. RHYMNEY RAILWAY-Nice used example of the 2d RLS from the 1st issue with strong ink cross cancel and control 1716 Res £20
183. RHYMNEY RAILWAY-Lightly mounted 2d RLS from the 1st issue with control 533 and with roulette perms Res £10
184. RHYMNEY RAILWAY-Manuscript 4d on 3d RLS with control number 5-mounted mint and UNPRICED by de Lacy-Spencer Res £30
185. WREXHAM, MOLD & CONNAHS QUAY RAILWAY-Unused 2d RLS from the one and only issue with control 692 Res £5
186. NORTH WALES & LIVERPOOL RAILWAY COMMITTEE-Unused 2d RLS from the 1st issue Res £30
187. SEVERN AND WYE AND SEVERN BRIDGE RAILWAY-Unused 1st issue 2d RLS from the bottom right of the sheet stuck to piece but not cancelled Res £8
188. WREXHAM, MOLD & CONNAHS QUAY RAILWAY-Unused example of the only issue 2d RLS with control 290 Res £5
189. COCKERMOUTH, KESWICK & PENRITH RAILWAY-Mounted mint 2d RLS from die II of the 2nd issue of August 1896 Res £6
190. CLEATOR & WORKINGTON JUNCTION RAILWAY-2d RLS from the left of the sheet and the 2nd issue-superb unmounted mint Res £7
191. OLDHAM, ASHTON & GUIDE BRIDGE RAILWAY-2d RLS from the 1st issue of January 1891 and from the bottom left corner of the sheet-unmounted mint and scarce as such Res £35
192. WEST CLARE RAILWAY-2d RLS from the 2nd issue-mint, no gum, but clean Res £4
193. WREXHAM, MOLD & CONNAHS QUAY RAILWAY-2d RLS from the only issue with control 921 Res £5
194. EAST LONDON RAILWAY-Superb example of the 2d almon pink RLS with ink cross cancel and straight-line WAPPING in violet ink on piece [course printing-no pin holes] from the 3rd print of May 1898 Res £22

195. DUNDEE & ARBROATH JOINT RAILWAY-2d RLS from the 1st issue of January 1891-unused Res £8
196. SOUTHERN RAILWAY-COMplete SHEET of the 4d RLS from the 5th issue of 1925 perf 14 x 12-top 3 stamps are m/mint-stamps catalogued at £300 in year 2000 [12] Res £70
197. SOMERSET & DORSET RAILWAY-COMplete SHEET of the 4d RLS with controls A7541-A7552-two stamps very l/m/m Res £45
198. GREAT EASTERN RAILWAY-QV 1d red plate No.138 with the scarce G.E.R UNDERPRINT in red ink-used Res £25
199. GREAT EASTERN RAILWAY-QV 1d red from plate No.164 with the scarce G.E.R UNDERPRINT in red ink-used from London-some slightly trimmed perfs Res £22
200. NORTH EASTERN RAILWAY-COVER to London with 2d RLS from the 34th issue of June 1894 tied at left by pencil cross. The added pair of QV ½d blue-green values are similarly tied by NORTH ALLERTON duplex cancel on 2.8.1901 Res £65
201. CALEDONIAN RAILWAY-COVER to London with 2d RLS cancelled by ink cross and LONDON N.W squared circle on 22.6.1905-the added 1d is similarly tied Res £65
202. CALEDONIAN RAILWAY-Commercial cover to London with GEO V 1½d tied by London N.W.1 British Goods slogan on 26.8.1925. On the back is the 4d blue on white paid parcel stamp with the diamond cancel of OBAN dated 24.8.1925 in violet ink Res £75
203. SOUTH EASTERN & CHATHAM RAILWAY-George King cover addressed to him in London with 4d RLS with control 24300 cancelled by s/line dater 22 SEP 1923 in violet ink. The added GEO V ½d & 1d values are similarly cancelled-very clean and attractive Res £80
204. LONDON & SOUTH WESTERN RAILWAY-Mourning cover addressed to West Moors with "IMMEDIATE" at top left and a 2d RLS alongside, cancelled by two strikes of the s/line VERWOOD in the form of across and in violet ink-sadly, the postage stamp at top right has been removed, leaving just the V of Verwood showing Res £45
205. GLASGOW & SOUTH WESTERN RAILWAY-Ewen cover addressed to Norwood with 2d RLS and added EDW VII 1d tied by London N.W machine on 23.6.1905. Both also have an ink cross cancel. At top left is the s/line RINMORE [station] in blue-green ink - **see illustration on page 14** Res £100

206. MIDLAND RAILWAY-QV 1d pink envelope to Widnes with 2d RLS with control 26418 and the stamp impression cancelled by ink crosses and duplexes NORMANTON STATION-048 on 1.2.93-anniversary of the introduction of RLS!! Some light foxing will clear up Res £100
207. NORTH BRITISH RAILWAY-Ewen cover to Norwood with 2d RLS and EDW VII 1d tied by London N.W machine on 1.6.1905 Res £70
208. GREAT CENTRAL & MIDLAND JOINT COMMITTEE-Manuscript 4d on 3d RLS tied by a handmade violet inked cross to a cover addressed to Manchester [Wilson]. The added GEO V ½d & 1½d values and the RLS are tied by MANCHESTER/M machine on 15.2.21 Res £100
209. LANCASHIRE & YORKSHIRE RAILWAY-Commercial cover addressed to Pontefract with 2d RLS control 7600 tied by black ink strokes. The EDW VII 1d is tied by PONTEFRACT d/ring on 5.5.02 Res £70
210. SOUTH EASTERN RAILWAY-Commercial cover addressed to Martins bank, Bromley with 2d RLS control 22575 and 1d lilac tied by BRONLEY/KENT-144 duplex cancel on 7.11.1894-nice!! Res £100
211. LONDON & NORTH WESTERN RAILWAY-Commercial EDW VII 1d postal stationery env to Penge with added 2d RLS tied by LONDON N.W/4 d/ring and by oval ORDSALL LANE & S dated 24.9.1904 Res £80
212. GREAT CENTRAL & MIDLAND JOINT COMMITTEE-3d RLS on cover tied by unframed G.C & M JT COMMITTEE/ MARPLE PASSENGER on 30.1.1921 Res £100
213. TALYLLYN RAILWAY-Cover addressed to Gloucester Central Station to be called for with 1/- on 11d surcharge value tied by company cancel as is the 3d Welsh regional stamp. On the back is a Talyllyn Railway publicity label Res £55
214. TALYLLYN RAILWAY-Complete sheet of the 1/- on 11d values with red stamp at top left Res £50
215. BRISTOL & EXETER RAILWAY-First issue 1d, 2d & 3d newspaper parcel stamps-all very good used with ink cancels [3] Res £60
216. MIDLAND GREAT WESTERN RAILWAY OF IRELAND-1d black on yellow Luggage Deposit Office stamp in mint condition-see illustration Res £22
217. LONDON, MIDLAND & SCOTTISH RAILWAY-9d parcel stamp issued at ARDROSSAN/S.V.O and cancelled by s/line WHITING BAY-Scarce from the Scottish Islands Res £20

218. BARRY RAILWAY-3d black on pink prepaid newspaper parcel stamp, mint Res £18
219. TAFF VALE RAILWAY-1st type 1d black on white Newspaper Parcel stamp with Edwards facsimile signature-used Res £15
220. NORTHAMPTON & BANBURY JUNCTION RAILWAY-1 Newspaper Only green stripe on black on violet stamp with blue pencil cancel Res £10
221. GREAT EASTERN RAILWAY-Less common 3d surcharge overprint on 2d "Four Newspapers" stamp tied to piece by BROXBOURNE/CANCELLED s/ring on 1.7.1920 Res £20
222. GREAT WESTERN RAILWAY-1 Newspapers Only green stripe on black on orange stamp with the error of "S" after newspaper from the short-lived Die I-see following item Res £22
223. GREAT WESTERN RAILWAY-1 Newspaper Only green stripe on black on orange stamp, unused from the corrected first die with "S" removed Res £12
224. BEIRA & MASHONALAND & RHODESIA RAILWAYS-1d Prepaid Newspaper Parcel Stamp, unused Res £15
225. BEIRA & MASHONALAND RAILWAYS-1d Prepaid Newspaper Parcel stamp, unused Res £15
226. QUEENSLAND RAILWAYS-3d x 2 & 5d & 6d "Newspapers and Parcels" stamps used from ROMA 3d & 5d and ROMA ST., 3d & 6d-all used [4] Res £12
227. GREAT CENTRAL RAILWAY-8d, 9d, 10d & 11d prepaid parcel stamps used Rugby, Kirksby Pinxton, Filsley & ??? [4] Res £12
228. GREAT CENTRAL RAILWAY-11d, 1/-, 1/6d & 2/- prepaid loco parcel stamps used from MANCHESTER, LONDON ROAD, NOTTINGHAM VICTORIA, FALLOWFIELD FOR WITHINGTON & DISBURY and from MARYLEBONE respectively [4] Res £18
229. GREAT CENTRAL RAILWAY-11d, 1/-, 1/2d, 1/6d & 1/9d loco prepaid parcel stamps issued at and used from FALLOWFIELD, GUIDE BRIDGE, NOTTINGHAM VICTORIA [final three values] [5] Res £20
230. GREAT CENTRAL RAILWAY-2/- loco value issued at and used from RUGBY Res £5

231. GREAT CENTRAL RAILWAY-2/- & 2/6d loco prepaid parcel stamps both used and issued at NOTTINGHAM VICTORIA PARCEL OFFICES [2] Res £9
232. GREAT CENTRAL RAILWAY-Less common 2/-, 3/- & 4/- values all used from and issued at NOTTINGHAM VICTORIA [3] Res £15
233. GREAT CENTRAL RAILWAY-Scarce 10/- loco prepaid parcel stamp issued from and used from GUIDE BRIDGE Res £15
234. GREAT CENTRAL RAILWAY-2/6d loco prepaid parcel stamp issued at and used from SHEFFIELD VICTORIA Res £8
235. GREAT CENTRAL RAILWAY-4d loco prepaid parcel stamp issued and used from ROTHERHAM & MASBORO' Res £4
236. GREAT CENTRAL RAILWAY [M.S & L RY] Pair of ½d blue on white newspaper parcel stamps, unused from the 1897 issue [2] Res £8
237. GREAT CENTRAL RAILWAY M.S & L RY]-1/2d, 1d, 2d & 3d blue on white issues from 1897 [4] Res £12
238. GREAT CENTRAL RAILWAY [M.S & L RY]-Used 1d, 2d, 3d, 4d & 6d blue on white values from the 1897 issue [5] Res £12
239. GREAT CENTRAL RAILWAY-[M.S & L RY]-Used 1d, 2d, 3d & 4d blue on white values from the 1897 perf 12 issue [4] Res £10
240. GREAT CENTRAL RAILWAY-Horizontal strip of 3 x 1d newspaper parcel stamps from the 1899 issue, unused [3] Res £10
241. GREAT CENTRAL RAILWAY-Block of 4 x 1d newspaper parcel stamps in a very deep blue shade from the 1899 issue, mint [4] Res £15
242. GREAT CENTRAL RAILWAY-Roulette perf ½d, 2d & 3d newspaper parcel stamps from the 1905 issue [3] Res £12
243. GREAT CENTRAL RAILWAY-Block of 4 x ½d roulette perf newspaper parcel stamps from the 1905 issue, mint [4] Res £18
244. GREAT CENTRAL RAILWAY-Mint block of 4 x 3d roulette perf newspaper parcel stamps from the 1905 issue [4] Res £22
245. GREAT CENTRAL RAILWAY-Mint block of 4 x 4d roulette perf newspaper parcel stamps from the 1905 issue [4] Res £22
246. GREAT CENTRAL RAILWAY-7d & 1/11d black on green loco prepaid parcel stamps issued at and used from GRIMSBY ROYAL FISH DOCK & LEICESTER CENTRAL [2] Res £12

247. GREAT CENTRAL RAILWAY-Vertical pair of the 6d black on buff/yellow loco prepaid parcel stamps issued at and used from NOTTINGHAM VICTORIA [2] Res £9
248. GREAT CENTRAL RAILWAY-6d, 7d, 9d & 2/- black on yellow/buff prepaid parcel stamps all issued from and used from NOTTINGHAM VICTORIA [4] Res £15
249. GREAT CENTRAL RAILWAY-9d & 2/- black on yellow/buff loco prepaid parcel stamps used and issued from NOTTINGHAM VICTORIA [2] Res £10
250. GREAT WESTERN RAILWAY-BISECTED 1d prepaid newspaper parcel stamp [control 316003] on part wrapper tied by ink cross cancel - **see illustration on page 15** Res £22
251. GREAT NORTHERN RAILWAY-IMPERF PROOF Pair of ½d “One Newspaper” stamps on normal, un-gummed paper Res £35
252. GREAT EASTERN RAILWAY-Strip of 3 x 1d “Newspapers in Bulk” stamps on piece and cancelled by NEWMARKET/DATE/CANCELLED on 22.4.1908 [3] Res £12
253. GREAT EASTERN RAILWAY-Less common 3d red surcharge overprint on 2d “Four Newspapers” stamp tied to piece by BROXBOURNE/DATE /CANCELLED on 30.9.1920 Res £20
254. GREAT NORTHERN RAILWAY-Two strips of 3 and a single 1d prepaid parcel stamp on piece [7] Res £10
255. MIDLAND RAILWAY-Two strips of 3 and a single 1d prepaid newspaper parcels stamp tied to piece by pencil squiggle [7] Res £10
256. LONDON & SOUTH WESTERN RAILWAY-Block of 6 x 1d “Two Newspapers” parcel stamps on piece, cancelled by black crayon lines-2 stamps slightly injured!! [6] Res £10
257. KENT & EAST SUSSEX RAILWAY-11d prepaid parcel stamp, unused from HIGH HALDEN ROAD Station Res £4
258. SOUTHERN RAILWAY-Selection of various values used from various stations-mixed condition [7] Res £5
259. SOUTH EASTERN & CHATHAM RAILWAY-Selection of different values, all from CANNON STREET, HASTINGS, FOLKESTONE JUNCTION, GRAVESEND CENTRAL, HEADCORN & ASHFORD [18] Res £22

260. L.M.S AGENT, SANDBACH-Printed luggage tag from Bell and Company, addressed to the Manchester & District Brewers' Society, care of the agent at Sandbach. Attached is the Bells of Stockport "Returned Empty" label-mint condition Res £6
261. PENYBONT STATION POST OFFICE-Black and white postcard showing delivery van and children outside the station post office Res £22
262. RODWELL STATION, WEYMOUTH-Coloured card showing people on the station-unused Res £12
263. CENTRAL STATION, BOURNEMOUTH-Real photo postcard showing train and people on the station-unused Res £12
264. PETERSFIELD STATION-Black & white postcard showing train & people on the station-unused Res £12
265. RADLETT STATION, HERTS-Coloured postcard used in 1909 showing an almost empty station Res £12
266. GREAT NORTHERN RAILWAY STATION, ROYSTON-Kingsway real photo postcard showing train and lots of people on the station-used 1913 Res £25
267. CANONBIE STATION-Coloured card showing staff and passengers on the station-unused Res £12
268. SHEFFIELD MIDLAND STATION-Unused Kingsway real photo postcard showing train & staff on the station Res £22
269. THORNTON STATION, NEAR FLEETWOOD-Coloured postcard of 1905, unused and showing approaching train and passengers Res £18
270. LEVENSHUME STATION-Exterior view of the station and surrounding housing, used 1906 Res £12
271. NORTHWICH STATION-Coloured postcard showing passengers on the station-unused Res £10
272. PADDINGTON STATION-Real photo card from No.1 platform showing serviceman and 100's of others waiting -used 1913 Res £10
273. LONDON BRIDGE STATION-Tucks Oilette from the "London Railway Stations" series showing staff and passengers, lots of parcels and luggage-unused Res £8
274. MARYLEBONE GREAT CENTRAL RAILWAY STATION-Tucks Oilette as previous lot showing booking office, Tucks postcard shop and passengers Res £8

275. MOORGATE STREET METROPOLITAN RAILWAY STATION-Tucks Oilette as previous lots viewed from the outside Res £7
276. BROAD STREET STATION-Tucks Oilette as previous lots with a view from the outside Res £7
277. CENTRAL LINE TUBE STATION-Tucks Oilette as previous showing the tube train at the station, headed for the City & South London Railway Res £8
278. GREAT EASTERN LIVERPOOL STREET STATION-Tucks Oilette as previous lot showing the station entrance for Cabs Res £7
279. EBBW VALE L & N.W Station coloured postcard showing sidings, wagons etc.-unused Res £15
280. PONTLLANFRAITH GWR STATION Near Blackwood-Real photo distant view of the station with train alongside-unused Res £18
281. DONCASTER STATION-Coloured postcard showing a train entering the station alongside one already there-used 1905 Res £6
282. BIRDWELL & HOYLAND COMMON STATION-Real photo postcard showing staff and passengers on the station-used 1921 Res £22
283. WHYTELEAFE STATION-Black and white postcard showing a train approaching the station-used 1906 Res £15
284. MITCHAM JUNCTION-Real photo postcard showing train approaching the station-unused 1926 Res £22
285. ALL HALLOWS ON SEA STATION-Real photo postcard of the station from the outside showing platforms etc.-used 1949 Res £15
286. HULME END STATION-Real photo postcard showing the empty station with a old Great North of Scotland carriage now being used as a bike shed-unused Res £18
287. MANIFOLD RAILWAY, TRAIN AT HULME END-Black & white postcard showing train, staff and customers on the platform-unused Res £18
288. SHEPHERD'S BUSH TWOPENNY TUBE-Black & white postcard showing the booking office and queue-used 1905 Res £15
289. BICKLEY STATION, KENT-Black & white postcard of the station and platforms-used 1906 Res £20

290. MUMPS STATION, OLDHAM-Coloured postcard of the station and platforms-unused Res £15
291. PRESTON STATION-Kingsway real photo postcard showing the main line down platform with staff etc. Written from H.M.S TIGER with the Tiger's PASSED CENSOR cogwheel mark in violet ink, struck on 3.6.1915 Res £18
292. NEWBRIDGE STATION-Sepia photographic postcard showing train and passengers at the station-used 1917 Res £15
293. NARBOROUGH & PENTLEY STATION-Black & white postcard showing the station & platforms-unused Res £12
294. LOOE STATION-Unused coloured postcard showing train and passengers etc-unused Res £15
295. MUCH WENLOCK STATION-Coloured card used in 1905 showing platform and passengers etc Res £12
296. ALTRINCHAM STATION-Black & white postcard used 1907 showing staff and passengers etc Res £20
297. ALSAGER STATION-Black & white postcard showing platforms and passengers etc.-used 1905 Res £15
298. ASHFORD STATION-Kingsway real photo postcard of the S.E & C station with passengers and staff etc-used 1917 Res £22
299. RAVENGLASS Miniature Railway terminus real photo postcard showing at least 4 trains and passengers etc-unused Res £6
300. ROMNEY, HYTHE & DYMCHURCH RAILWAY-Real photo card showing the works sheds with four engines lined up-unused Res £6
301. LONDON UNDERGROUND-Map postcard with an advert for the Liverpool Street Hotel during the ANGLO-FRENCH Exhibition. Text is in French [advert] so likely given to the Frogs when they came over for the Entente Cordiale "celebrations"-unused Res £15
302. NORTHAMPTON MINIATURE RAILWAY-Black & white postcard showing the train with lots of schoolboys waiting for their go!! Unused Res £10
303. LISTOWEL LARTIGUE Single track railway-real photo postcard of the railway with engine and staff etc and a little printed bit saying the line was closed in 1921-unused Res £15

304. PICCADILLY STATION, London Underground-multiview real photo postcard of the tube station postally used 1932 Res £6
305. 1911 GREAT RAILWAY STRIKE-Postcard offering alternative forms of transport from SOUTHPORT Res £25
306. RAVENGLASS & ESKDALE RAILWAY-Black & white postcard of the engine "Sir Aubrey Brocklebank" with driver in position Res £6
307. CREWE STATION/2-S/rings dated 26.6.1914 ties 3 x 1d postage dues to underpaid postcard from Belgium Res £22
308. BEDLINGTON STATION/NORTHUMBERLAND-Krag machine cancel dated 15.5.1958 ties stamp to commercial cover Res £8
309. MITCHAM JUNCTION-PARCEL POST Label cancelled by s/ring MITCHAM JUNCTION/MITCHAM on 6.5.07 Res £25
310. NIGG/NIGG STATION ROSS-SHIRE D/ring dated 30.8.1948 ties stamp to postcard Res £15
311. PENYBONT STATION/RADNOR-Scarcer d/ring cancel dated 6.11.1937 cancels post office pictorial greetings telegram Res £22
312. TIMPERLEY STATION/POST/OFFICE-Modern self-inking datestamp dated 7.8.2015 on certificate of posting Res £7
313. CROWTHORNE STATION BERKSHIRE/POST/OFFICE-Modern datestamp on certificate of posting dated 21.2.2012 Res £6
314. BEDLINGTON/BEDLINGTON STATION NTHBD-D/ring transit mark dated 17.8.1939 on redirected postcard Res £12
315. OLD DEAR/MINTLAW STATION-D/ring dated 30.3.1944 ties stamp to circular Res £9
316. BRIDGE OF GAUR/RANNOCH STATION-D/ring dated 5.8.1959 ties stamps to postcard Res £7
317. FRESHWATER STATION/I OF WIGHT-H06 Duplex mark dated 3.7.1902 ties stamp to postcard Res £12
318. MICHELDEVER STATION-PARCEL POST Label from here with GEO V 3d & 6d values tied by d/rings MICHELDEVER STATION/+ on 7.1.1919-odd faults Res £22
319. POLKERRIS/PAR STATION/CORNWALL-Black rubber cancel dated 13.8.1921 ties stamp to postcard Res £22

320. THORNTONHALL STATION-S/ring dated 4.10.1922 ties stamp to postcard Res £10
321. BATH STATION OFFICE/5-Less common d/ring dated 25.5.1929 ties stamp to postcard Res £12
322. GLASGOW GK ST-Thimble cancel of the Glasgow & Greenock Sorting Tender dated 16.8.1872 on the back of cover from Barrow in Furness to Greenock Res £25
323. TOO FRAGILE FOR TRANSFER BY APPARATUS-GEO V 2d black registered envelope to London with 3 x 1d GEO V values tied by BUNGAY s/rings on 20.4.23. The envelope is crossed vertically & diagonally to show that it should not be transferred by TPO Res £22
324. REGISTERED/F.N.M/LONDON-Oval mark of the French Night Mail on registered cover from Bucharest to Leeds dated 27.7.1894 [Wilson 503] Res £30
325. DONCASTER LONDON/T.P.O-S/rings dated 5.12.1935 tie stamps to cover Res £15
326. NORTH OF SCOTLAND/SORTING CARRIAGE-S/ring dated 3.2.1904 ties stamp to postcard Res £40
327. SOUTH WESTERN TPO/NIGHT DOWN-S/rings dated 3.8.1935 ties ½d [inv watermark] & 1d Silver Jubilee values to cover. Below is the framed POSTED WITHOUT LATE FEE - **see illustration on page 15** Res £30
328. GREENOCK SORTING TENDER-Thimble cancel on back of an embossed PRIVY COUNCIL OFFICE envelope dated 29.7.1874 with index BO Res £18
329. MIDLAND TPO/GOING NORTH-Superb strike of the s/ring ties stamp to cover Res £12
330. HIGHD SORTG CARRIAGE/NIGHT MAIL-S/ring dated 10.8.1905 with index U ties stamp to postcard Res £20
331. GLASGOW & CARLISLE S.C/UP LIMITED-S/ring dated 31.1.1908 with index L ties stamp to postcard Res £10
332. GALLOWAY SORTING TENDER-S/ring dated 31.12.1903 with index C ties stamp to postcard Res £20

333. SOUTH AFRICA-GB QV 2d postal stationery registered envelope to Craddock with added 1d lilac tied by d/ring ARMY POST OFFICE/POTCHESTROOM dated 14.2.1902. On the back is the d/ring MIDLAND/T.P.O.1 dated 19.2.1902 Res £18
334. EGYPT-QV 2d registered postal stationery envelope to Cairo from Manchester dated 2.2.1892 with d/ring bilingual AMB ALEXANDRIE-CAIRE on the back, dated 10.2.1892 Res £9
335. SOUTH AFRICA-Cover addressed to Greytown with a pair of 2d values tied by oval COOKHOUSE 239 cancel dated 23.11.1951 and further cancelled by s/line COOKHOUSE in violet ink. Below is the arrival oval GREYTOWN 958 dated 26.11.1951. On the back is the railway letter post label with s/line COOKHOUSE Res £25
336. SOUTH AFRICA-Cover addressed to a Durban bank with 2 x ½d & a 1½d tied by oval WINKLESPRUIT 913 on 23.8.1948. On the back is the railway letter post label with same oval cancel and tied by the DURBAN 783 oval on the same day Res £25
337. AUSTRALIA-Window envelope with 1d & 2d values perfin FG of the Farmers and Graziers co-op tied by s/ring RLY STN SYDNEY/L.F/1/N.S.W AUST on 11.3.1941 Res £12
338. AUSTRALIA-N.S.W 1d violet postal stationery postcard from ARMIDALE dated 3.8.1893 with s/ring TRAVELLING P.O No.3 NORTH B/N.S.W dated 3.8.1893 on the back Res £20
339. LUXEMBOURG-The three stamps issued for the Mardi de la Pentecote of the Prince Henri Railway-blue, green & violet [3] es £18
340. SWITZERLAND-Postcard to Reading with 10c tied by d/ring MOEHEL on 23.8.1902 and with unframed RIEDERALP/[WALLIS] railway mark alongside Res £5
341. SWITZERLAND-Postcard to London with s/line MATHERANIRTHAL s/line tying the stamp on 16.6.1.893 Res £6
342. SWITZERLAND-Postcard to London with stamp tied by d/ring on 24.12.1912. Alongside is the unframed GRIESAU/KIENTHAL Res £6
343. SWITZERLAND-Postcard to Abingdon with stamp tied by d/ring MEIRINGEN on 3.7.1906. At bottom left is the unframed ENGSTENALP/[BERN] Res £6

344. SWITZERLAND-Postcard to Liverpool with stamp tied by d/ring GOSCHENEN on 21.8.1905. At bottom left is the s/ring GOSCHENEN ALP Res £6
345. AUSTRALIA-Postcard to Lincoln with Western Australia 1d tied by s/ring MIDLAND JUNCTION/WESTERN AUSTRALIA dated 4.11.1903 Res £8
346. SIERRA LEONE-Cover to the U.K with stamps tied by s/rings BOPENDUMBA/T.P.O on 4.6.1962 Res £8
347. SIERRA LEONE-Cover to the U.K with stamps tied by s/rings FREETOWN-BO T.P.O/SIERRA LEONE on 7.10.1961 Res £8
348. SIERRA LEONE-Cover to the U.K with stamps tied by s/rings WSPENDUMBA T.P.O/SIERRA LEONE on 7.10.1961 Res £8
349. LONDON TRANSPORT-Crested window envelope with EDW VIII 1½d perfin LT tied by CHISWICK/W4 machine on 11.12.36 Res £6
350. GREAT WESTERN RAILWAY-Window envelope with printed "GO GREAT WESTERN" at top left has the EDW VIII ½d perfin GWR and tied by SWINDON machine on 11.12.1936 Res £6
351. AUSTRALIA-Registered cover from Aberdeen, N.S.W to Walgett with stamps tied by s/ring on 24.4.1931. On the back is the s/ring T.P.O 1 NTH WEST/*/ DOWN DATE/B/N.S.W dated the same day Res £8
352. IRELAND-Cover addressed to London with 3 x 2d Irish values tied by s/ring LIMERICK JUNCTION in Irish on 24.4.1970. Also on the front are the oval C.I.E/DATE/LIMERICK JUNCTION and the framed 4320/DATE/LIMERICK JCTN, both dated the same day Res £8
353. PORT OF MONTEITH STATION/670-Scots d/ring numeral cancel dated 6.5.1902 ties stamp to postcard Res £7
354. FRESHWATER STATION/I OF WIGHT-H06 Duplex cancel dated 4.6.1905 ties stamp to postcard Res £9
355. KNEBWORTH STATION-S/ring dated 5.12.1904 with index C ties stamp to postcard Res £5
356. BOOTLE/BOOTLE STATION CUMBERLAND-D/ring dated 31.7.1935 on redirected postcard Res £7
357. BOSHAM STATION CHICHESTER/W SUSSEX-S/ring dated 12.9.1977 ties 1p stamp to certificate of posting Res £5

358. G.E.R/BECCLES/GOODS OFFICE-Oval cachet in violet ink on back of ½d brown postcard from here, dated 31.5.1893 Res £6
359. STOKE STATION-Dated double arc cancel for the 2nd October 1857 with index C on back of letter to Derby Res £30
360. HEATHFIELD STATION-54 Duplex cancel dated 19.9.1891 ties 1d lilac to cover Res £35
361. EARLS COURT B.O NR RLY STN./S.W-S/ring dated 13.7.1909 ties 1d EDW VII value to QV 2d registered postal stationery envelope addressed to Birmingham Res £7
362. DRYMEN STATION-S/ring dated 14.2.1896 with index A on back of cover from Glasgow to Sterling Res £6
363. DOVER/STATION OFFICE-258 Duplex cancel ties ½d vermilion to hold-to-light London postcard addressed to Hove on 2.4.1900 Res £7
364. SWANLEY JUNCTION/KENT-D/ring dated 17.8.1923 ties stamp to cover Res £6
365. BATH/STATION OFFICE-S/ring dated 29.9.1901 ties 1d lilac to postcard addressed to Geneva Res £7
366. BATH STATION OFFICE/5-Less common d/ring dated 2.1.1929 ties stamp to postcard Res £12
367. LOCHEARNHEAD STN/552-Scots numeral d/ring cancel dated 12.8.1895 ties 1d lilac to cover Res £10
368. STATION S.O BOURNEMOUTH HANTS/4-S/ring tying stamp to postcard-very unusual as this mark was used 95% of the time to cancel postage dues on underpaid/unpaid covers Res £7
369. FRESHWATER STATION/I OF WIGHT-D/ring dated 9.9.1928 ties stamp to cover Res £6
370. LIMERICK JUNC R.S.O/Co. TIP-S/ring dated 19.12.1906 ties stamp to cover Res £10
371. DRYMEN STATION/GLASGOW-Two strikes of the d/ring dated 11.10.1926 ties 2 x ½d GEO V values to postcard Res £6
372. CHICHESTER/STATION OFFICE-190 Duplex cancel dated 19.12.1887 with index E cancels QV ½d brown postcard Res £9

373. STH KENSINGTON STN B.O S.W.7/4-S/rings dated 16.11.1945 ties stamps to registered cover addressed to Polish Forces at M.E10. On the back is the same mark alongside the Polish Forces large s/ring receiver POCZTA POLOWA/102 dated 23.11.1945 Res £15
374. EDINR & NEWCASTLE S.T DAY MAIL/+ Unframed circular mark dated 20.8.1904 with index U ties stamp to postcard Res £7
375. CONTINENTAL NIGHT MAIL/CX-D/rings dated 24.7.1911 ties 3 x 1d GEO V values to postcard addressed to Paris Res £25
376. UP SPECIAL/T.P.O-D/ring on 28.8.33 ties stamp to cover Res £7
377. TAMWORTH LINCOLN S.C-S/ring transit mark dated 14.12.1934 on back of registered cover from Beirut to Lincoln Res £12
378. NORWICH SORTING TENDER/UP-S/ring dated 1.10.1915 on back of nice little registered cover from Cromer to London Res £12
379. SOUTH WESTERN T.P.O/NIGHT DOWN-S/ring dated 21.7.1918 on cover with stamp tied by s/ring TISBURY R.S.O/WILTS dated the previous day Res £9
380. LINCOLN SORTING TENDER-S/ring dated 19.12.1901 as a receiver on a postcard from the States Res £6
381. QV & EDW VII Cancels on piece-all are perfect strikes from 1874 to 1903 [15] Res £10
382. Similar lot to previous-13 pieces with excellent strikes from 1875 to 1905 includes violet rubber cancel D & B T.P.O/DATE/DOWN dated 29.8.1905 on part postcard from France. [13] Res £10
383. GREAT WESTERN T.P.O/GOING EAST-S/ring dated 26.8.1907 ties stamp to postcard Res £5
384. EXETER & TORRINGTON S.C/UP-S/ring dated 4.10.1912 ties 1d stamp to locally addressed Late Fee postcard Res £8
385. TISBURY R.S.O/WILTS-S/ring dated 12.8.1921 ties 2d stamp to Tisbury letter card addressed to London Res £7
386. CARRBRIDGE R.S.O INVERNESS-SHIRE-S/ring dated 9.6.1928 ties stamp to postcard Res £4
387. SLEIGHTS R.S.O/YORKS-S/ring receiver dated 24.4.1903 on postcard from Sunderland Res £4

388. LLANBEDRE R.S.O/MERIONETH-S/ring dated 17.6.1932 ties stamp to postcard Res £5
389. HERSTMOCEAUX/HAILSHAM-S.O SUSSEX-S/ring with R removed, dated 22.12.1923 ties stamp to postcard Res £5
390. CROXLEY GREEN R.S.O/HERTS-S/ring dated 12.1.1904 ties stamp to postcard Res £4
391. MANORCUNNINGHAM R.S.O/Co. DONEGAL-S/ring dated 16.9.1905 ties stamp to postcard-four lines Res £5
392. BELTRA/BALLISODARE R.S.O-S/ring dated 15.10.1908 ties stamp to postcard-three lines Res £5
393. RATHDOWNET BALLYPROPHY R.S.O/QUEEN'S Co.-S/ring dated 31.12.1908 ties stamp to postcard-four lines Res £5
394. POYNTXPASS R.S.O/Co. ARMAGH-S/ring dated 6.1.1905 ties stamp to postcard-four lines Res £5
395. LYNDHURST R.S.O/HANTS-Superb strike of the skeleton cancel dated 22.4.1905 ties stamp to postcard Res £9
396. WALLBOTTLE/NEWBURN R.S.O NORTHD-S/ring transit dated 4.6.1906 on postcard from Newburn Res £4
397. BETCHWORTH R.S.O/SY-Skeleton cancel dated 9.11.1904 ties stamp to postcard Res £8
398. BEAUFORT R.S.O/BRECON-S/ring dated 24.12.1905 ties stamp to postcard Res £4
399. HENLLAN R.S.O/CARDIGANSHIRE-S/ring dated 24.1.1906 ties stamp to postcard Res £5
400. GLIN R.S.O/Co. LIMERICK-S/ring dated 26.8.1903 ties stamp to postcard-four lines Res £5
401. BLOOMFIELD R.S.O/Co. DOWN-S/ring dated 15.6.1905 ties stamp to postcard-four lines Res £5
402. VALENCIA ISLAND R.S.O/Co. KERRY-S/ring dated 16.2.1910 ties stamp to postcard-three lines Res £5
403. LONG MELFORD R.S.O/SUFFOLK-D/ring dated 15.9.1925 ties stamp to postcard Res £4

404. BOMAHON/KILMACTHOMAS R.S.O-S/ring dated 20.10.1909 ties stamp to postcard-two lines Res £5
405. CASTLEISLAND R.S.O/Co. KERRY-S/ring dated 2.2.1906 ties stamp to postcard-three lines Res £5
406. DERVOCK R.S.O/Co. ANTRIM-S/ring dated 20.4.1905 as a receiver on postcard from London-three lines Res £5
407. COURTMACSHERRY R.S.O/Co. CORK-S/ring dated 31.12.1908 ties stamp to postcard-four lines Res £5
408. GERMANY-German Feldpost stampless cover with letter addressed to Herford, cancelled by the oval KUTENHAUSEN-WEGHOUSE/BAHNPOST/Z25 dated 18.3.1916. At bottom left is the German military unit cachet in violet ink Res £8
409. CANADA-S/ring TORONTO & NORTH BAY R.P.O/No.2 dated 28.6.1906 with index 50 ties stamp to postcard Res £5
410. HOLLAND-Superb real photo mounted on card of BUDEL STATION with engine and 10 members of staff posing for the camera-undated but circa 1905 Res £8
411. LATE FEE-Postcard to Paris with EDW VII 1d tied by the hooded circle cancel MARK LANE E.C/L1d/TIME/DATE dated 1.3.1904. At left is the s/ring TOO LATE/G.P.O Res £6
412. EAST ANGLIAN T.P.O UP PE SECT/2-D/ring dated 13.9.1961 ties 3d Wilding to undelivered commercial cover with insufficient address. At left is the framed POSTED WITHOUT LATE FEE/1d TO PAY and below, the 1d postage due tied at CATFORD the following day Res £6
413. HIGHD SORTG CARRIAGE/NIGHT MAIL-S/ring dated 16.9.1878 with index U cancels QV 1d pink env to Tamworth Res £22
414. BRISTOL BIRMINGHAM T.P.O-S/rings dated 18.8.1947 ties stamps to Late Fee cover to Rotherham Res £6
415. JAMAICA-S/rings T.P.O/JAMAICA dated 16.9.1935 ties 6 x 1d Silver Jubilee values to cover addressed to New York Res £22
416. MISSENT TO/DERBY R.O-Black strike of the Railway Office missort on front of cover addressed to Bakewell on 6.6.1855-the LATEST RECORDED DATE OF USE!! Res £65
417. BANAVIE R.S.O INVERNESS.SHIRE/+S/ring dated 1.9.1932 ties stamp to postcard Res £5

418. MORTEHOE -S.O/N. DEVON-S/ring with the R removed, dated 14.6.1929 ties stamp to postcard Res £4
419. WEST SOMERSET MINERAL RAILWAY-Printed and folded pre-addressed communication to Stogumber with 1d red stars tied by 776 numeral of Taunton on 20.12.1854. On the back is an undated d/arc WASHFORD in black ink Res £10
420. CASTLECARY R.S.O/SOMERSET-S/ring dated 12.4.1920 ties stamp to postcard Res £4
421. CHALFONT ST GILES/GERRARDS CROSS R.S.O-S/ring dated 16.8.1922 ties stamp to postcard Res £5
422. WATERLOO STATION B.O S.E.1-S/ring dated 14.11.1962 cancels 1/- International Reply Coupon Res £7
423. WATERLOO STATION B.O S.E.1-S/ring dated 13.6.1958 cancels 9d International Reply Coupon Res £7
424. RUGBY STATION-659 Duplex cancel dated 30.4.1884 with index L ties 1d lilac to cover addressed locally and with letter on headed HILLMORTON, RUGBY notepaper Res £8
425. LLANBERRIS R.S.O-Skeleton cancel dated 5.9.1903 ties stamp to postcard Res £8
426. WATERLOO STATION B.O S.E.1-S/ring dated 3.7.1960 cancels 5d Commonwealth Reply Coupon Res £7
427. VICTORIA STATION S.W.1/3-S/ring dated 28.5.1957 cancels 9d International Reply Coupon Res £7
428. VICTORIA STATION S.W.1/4-S/ring dated 5.5.1958 cancels 9d International Reply Coupon Res £7
429. LIVERPOOL ST STN E.C.2-S/ring dated 23.6.1956 cancels 9d International Reply Coupon Res £7
430. LONDON BRIDGE STN/SOUTHERN RAILWAY S.E.1-S/ring dated 26.8.1939 cancels 6d International Reply Coupon Res £12
431. LONDON BRIDGE STN/SOUTHERN RAILWAY S.E.1-S/ring cancels 3d on 2½d surcharged overprinted Imperial Reply Coupon Res £12
432. WEYBRIDGE STATION-B87 Four bar duplex cancel dated 4.6.1880 with index B ties 1d Venetian red to cover Res £12

433. CUMBERNAULD STATION-S/ring dated 9.6.1905 with index B ties stamp to postcard Res £6
434. STRAFFAN STN S.O/Co. KILDARE-S/ring dated 24.12.1908 ties stamp to postcard Res £8
435. STRAFFAN/STATION-S/ring dated 9.9.1904 ties stamp to postcard Res £7
436. FRESHWATER STATION/I OF WIGHT-S/ring and duplex cancels on redirected postcard from Worthing to Gillingham to Freshwater to Gillingham, Dorset. Both are dated 13.10.1902 Res £12
437. WOODLAND STATION-S/ring dated 29.7.1911 ties stamp to postcard Res £7
438. CLEARBROOK YEALMPTON R.S.O/DEVON-S/ring dated 25.11.1911 with date slug inverted, cancels EDW VII ½d postal stationery postcard Res £6
439. CANADA-Advertising cover for seeds with 2c tied by s/ring BLACKWATER JCT & MIDLAND R.P.O/No.2 on 6.5.12 Res £5
440. CANADA-BEETON & COLLINGWOOD R.P.O/No.3 S/ring dated 4.4.1907 with date slug inverted ties stamp to cover Res £5
441. RUSSIA-Postcard to London with stamp tied by the oval CAPATOBb/BOK 3 dated 8.10.12 of the SARATOW RAILWAY Res £8
442. HOUGHTON/STOCKBRIDGE R.S.O HANTS-S/ring dated 28.7.1908 ties stamp to postcard Res £5
443. SPAIN-Postcard to London with 10c tied by octagonal AMB ASC/ DATE /8/CADIZ on 6.12.1906 Res £5
444. GERMANY-Stampless Feldpostcard cancelled by s/ring BIETIGHEIM WURTTBG/BAHNHOF on 10.2.1916 Res £4
445. CASTLECARY STATION-S/ring dated 21.8.1907 with index B ties stamp to postcard Res £5
446. APPLIEDORE R.S.O/N. DEVON-D/ring dated 14.10.1914 ties stamp to postcard Res £4
447. EDINR & NEWCASTLE S.C DAY MAIL/+ Unframed circular cancel dated 1.3.1906 with index U ties stamp to postcard Res £8
448. TAMWORTH & HEREFORD S.C UP-S/ring dated 29.4.1907 ties stamp to postcard Res £5

449. MICHELDEVER STATION-S/ring transit mark dated 14.8.1905 on postcard from Australia. Also, London M within circle inspector's mark in black and triangular S.W/5 railway missort mark Res £5
450. EXETER & EXMOUTH RAILWAY-Printed communication about the purchase of land for the railway pre-addressed to Exeter with 1d red [SG32] tied by numeral cancel 804 of TOPSHAM on 17.12.1856 Res £12
451. CHINA-20c Postal stationery postcard with three different Chinese language pictorial cachets in violet ink-all dated 48.1.12 Res £7
452. GUYANA-Airmail cover to Essex with stamps tied by d/rings T.P.A.B'CE RIVER STR/GUYANA dated 9.10.1968 Res £7
453. Belgium/France-Complete "Prices Current" cancelled by d/ring BELG AMB ERQUELINES/F on 29.1.1865 Res £15
454. CYPRUS-Foxed cover addressed to RAF Nicosia with a block of 6 x ¼ Piastre values tied by s/rings SKARINOU STATION/CYPRUS on 19.8.1949 Res £8
455. U.S.A-Postcard to Los Angeles with 1c tied by PORTLAND OREG/TRANS CLK R.M.S duplex on 19.6.1937 Res £5
456. AUSTRALIA-Postcard to the U.K with Victoria QV 1d tied by s/ring T.P.O 19/ VICTORIA on 28.12. 1908 with index UP Res £9
457. AUSTRALIA-Cover addressed to Melbourne with Victoria QV 1d tied by s/ring T.P.O 3/VICTORIA on 17.6.1912 with index UP Res £9
458. AUSTRALIA-Victoria 1d postal stationerycard addressed to Geelong, canc by s/ring UP TRAIN/M.G.I/VICTORIA on 20.12.88 Res £10
459. RUSSIA-Postcard with 3k stamp tied by oval cancel of the PETROGRAD TO RIGA T.P.O on 7.5.1917 Res £9
460. TREBOETH/LANDORE R.S.O GLAMORGAN-S/ring dated 17.5.1913 ties stamp to postcard Res £5
461. RADCLIFFE ACKLINGTON R.S.O/NORTHHD-S/ring dated 29.6.1907 ties stamp to postcard addressed to NEWSHAM R.S.O Res £5
462. RED ROW/ACKLINGTON R.S.O NORTHHD-S/ring dated 22.12.1905 ties stamp to postcard Res £5
463. YORK SCARBORO' S.T-S/ring dated 28.7.1904 ties stamp to postcard Res £7

464. WINSFORD R.S.O/CHESHIRE-D/ring dated 11.9.1906 as transit mark on postcard from Settle Res £4
465. NORMANTON STATION-048 Duplex cancel dated 16.9.1905 ties stamp to postcard Res £5
466. MIDLAND RAILWAY-Pictorial map postcard advertising routes to Northern Ireland by Heysham-unused Res £10
467. MIDLAND RAILWAY-Pictorial map postcard advertising circular tours of the Derbyshire Peaks-unused Res £10
468. MIDLAND RAILWAY-Pictorial map postcard advertising the many routes to the Derbyshire Peaks-unused Res £10
469. MIDLAND RAILWAY-Pictorial map postcard advertising the many routes available to Northern Ireland-unused Res £10
470. MIDLAND RAILWAY-Pictorial map postcard advertising the various routes to the Ribble Valley-used 1906 from Sheffield Res £10
471. MIDLAND RAILWAY-Pictorial map postcard advertising circular tours in the Wharfedale District-card doubles up as an official correspondence card-unused Res £10
472. MIDLAND RAILWAY-Pictorial map postcard advertising the many routes available to Scotland, particularly the Midland Scotch Express-unused Res £10
473. MIDLAND RAILWAY-Pictorial map postcard advertising the many routes to the Yorkshire Watering Places-unused Res £10
474. MIDLAND RAILWAY-Pictorial map postcard advertising the routes to explore the Homes & Haunts of Burns & Scott-unused Res £10
475. MIDLAND RAILWAY-Pictorial map postcard advertising the direct routes between London, Bedford and the north-unused Res £10
476. PORTHCURNO/TREEN R.S.O CORNWALL-S/ring dated 20.8.1906 on postcard from Treen addressed to the States Res £4
477. LONG ROCK R.S.O/CORNWALL-S/ring dated 26.12.1910 ties stamp to postcard Res £5
478. SWITZERLAND-Postcard to Newmarket with 10c tied by d/ring MOEREL on 23.8.1905. Alongside is the unframed RIEDERALP/[WALLIS] Res £5

479. SWANLAND/BROUGH R.S.O YORKS-S/ring dated 7.9.1904 on postcard from North Ferriby to Eastbourne Res £5
480. HOLLAND-Postcard to London with 5c tied by d/ring BREDA-VLISSINGEN/I on 7.11.1901 Res £4
481. SWITZERLAND-Postcard to France with 10c tied by d/ring AMBULANT/No.1 3.9.03 trip No.584. At left is s/line GENEVE Res £5
482. ITALY-Postcard to Lake Como with 5c [damaged corner] tied by d/ring NATANTE ARONA LOCARNO on 25.8.1908 Res £5
483. LINCOLN SORTING CARRIAGE-S/ring transit mark 26.5.12 on card from Middx to Northampton-clearly missent to this TPO Res £6
484. MIDLAND T.P.O/FROM NORTH-S/ring dated 26.8.1906 with index N ties stamp to postcard Res £5
485. BIRKENHEAD RAILWAY-London & North Western Railway printed envelope to Preston from London, adapted for use by the Birkenhead Railway by crossing through any reference to the LNWR and inserting BIRKENHEAD on 15.7.1881 Res £7
486. MIDLAND RAILWAY-1911 Complete employees guide to Privilege Tickets with information and fares for the Derby area and further afield Res £10
487. EXETER & TORRINGTON S.C/UP-S/rings dated 22.9.1909 ties 2 x ½d values to Late Fee postcard to London Res £7
488. STATION ROAD SIDCUP/KENT-S/rings dated 23.9.1961 ties the two values of the Commonwealth Parliamentary Conference to registered cover addressed locally Res £7
489. STATION RD RINGWOOD/HANTS-S/ring dated 1.8.1951 ties stamps to registered cover. A better strike is on the back as the front strike has some wording "lost" in the stamp colours Res £6
490. SWINDON STATION-881 Duplex cancel dated 10.6.1905 ties stamp to postcard Res £6
491. BEAMISH R.S.O/DURHAM-S/ring dated 12.10.1910 tie stamp to postcard Res £4
492. TALLYLYN RAILWAY-Cover addressed to Gloucester with 3 x 1d Wildings tied by TOWYN d/rings on 28.1.1958 and with the 11d red stamp tied by s/ring EXTRA/1d/CHARGE and company cancel Res £35

493. MIDLAND RAILWAY HOTELS-Cover addressed to Switzerland with ½d blue-green & 2 x 1d lilacs tied by d/rings LEEDS/1 on 28.5.1900. At left is an illustrated list of the company's hotels in England-some light toning which should clean away Res £8
494. GREAT EASTERN RAILWAY-QV ½d brown printed postal stationery postcard addressed to Halesworth, cancelled by COLCHESTER squared circle on 13.10.1894 and with unframed G.E.R/HYTHE GOODS struck on the back in violet ink Res £7
495. SOUTHERN RAILWAY-Lovely 1946 Christmas card with illustrations inside by S Weaver and sent from the "Chairman's Room" at Waterloo Station Res £8
496. SOUTH EASTERN & CHATHAM RAILWAY-Complete approval book containing 18 prepaid parcel stamps issued from [and some used from] Hastings, Cannon Street, Ashford and Folkestone Junction-with values to 5/-. All are super examples [18] Res £25
497. K.U.T-Cover from London to Mwanza dated 1.6.32 with partial d/ring DARESSALAAM-KIGOMA T.P.O No.1 dated 12.6.32 and a lovely strike of the skeleton TAB MWA TPO dated the same day Res £15
498. SOUTH KENSINGTON STN/S.W-S/ring dated 21.8.1908 ties EDW VII 1½d to EDW VII registered envelope addressed to Paris Res £8
499. LATE FEE-Wrapper addressed to Paris with 1d red & 3d rose tied by individual strikes of the London-97 duplex cancels on 21.7.1875. At bottom left is the rectangular framed L1 in red ink Res £15
500. ITALY-Postcard to London with 75c tied by d/ring MESS MILANO LAVENO/1 dated 21.8.1926 Res £5
501. HEADCORN/GOODS DEPT-Unframed mark in violet ink struck on postcard on 31.12.1918 Res £5
502. CTPRUS-Cover addressed in Greek with a pair of the GEO VI ½ Piastre values tied by s/rings HISOU STATION/G.R/RURAL/SERVICE/CYPRUS on 30.3.1954 Res £10
503. UNCIRCULATED £5 George Stephenson banknote enclosed within plastic protector Res £5
504. LONDONDERRY & LOUGHSWILLY RAILWAY; THE STRABANE & LETTERKENNY RAILWAY & COUNTY DONEGAL RAILWAYS-Specimen impressions of various cancels to be made in wood or brass-all numbered, 1 to 5 and impressions in violet ink [5] Res £8

505. HUDDERSFIELD CORPORATION PASSENGER AND RAILWAY EXECUTIVE-6d Paid Parcel stamp unmounted mint circa 1960 Res £5
506. RAILWAY PASSENGERS' ASSURANCE COMPANY-Cover addressed to the stationmaster at SOUTH CAVE from Hull on 8.4.1949. At bottom right is the Centenary Label of the company 1849-1949 Res £10
507. GREAT WESTERN RAILWAY-GWR Perfin on EDW VII ½d tied to postcard by s/ring BROMFIELD R.S.O/SALOP on 30.3.1911 Res £6
508. FRANCE-Undulating circular cancel ABBEVILLE AU TREPORT on postcard from London to Onival, France Res £4
509. CHICHESTER-Postcard to Lewes with QV ½d tied by squared circle CHICHESTER with Station Office removed, on 26.8.1901 Res £5
510. LONDON & NORTH WESTERN RAILWAY-QV ½d lilac printed postal stationery correspondence card addressed to Biggleswade from London on 16.3.1871 Res £5
511. CANADIAN PACIFIC RAILWAY-GEO V 1½d postal stationery dividend statement to Clitheroe from London on 30.3.1929 Res £5
512. NORTH BRITISH RAILWAY-Printed letter addressed within Edinburgh dated 1.2.1872 tells of ending all negotiations with the Caledonian Rly in reference to an amalgamation of the two Res £8
513. NEWTOWN B.O NR STN/NEWTOWN-D/ring dated 22.7.1907 ties stamp to cover Res £4
514. MONASTEREVAN R.S.O/Co. KILDARE-S/ring dated 3.5.1906 on back of EDW VII 1d postal stationery envelope addressed there from Dublin-three lines Res £5
515. CEYLON/SRI LANKA-Likely philatelic cover addressed to the Holiday Inn, Colombo with stamps tied by d/rings DOWN GALLE TPO on 30.7.2003. At top left is the framed LATE FEE PAID and the framed TRAIN LETTER Res £5
516. EAST GLOUCESTERSHIRE RAILWAY-Printed communication pre-addressed to a Cirencester solicitor with 1d red tied by CHELTENHAM-177 circular duplex on 19.12.1861 Res £7
517. SOUTHERN RAILWAY-September 1940 booklet containing the conditions upon which tickets are issued etc Res £6

518. NORTHERN COUNTIES COMMITTEE of the London, Midland & Scottish Railway-Time tables for trains and buses issued by the company and the Northern Ireland Road Transport Board, January 1937 Res £12
519. THE SNOWDON MOUNTAIN TRAMROAD-Circa 1895 Guide and Fares pricelist containing many local adverts and information. A little dusty, but scarcer item Res £20
520. AUSTRALIA-Airmail cover to London with eight-stamp franking including a strip of 3 x 3d Kukaburra values tied by s/rings ADELAIDE RAILWAY/S.A on 9.9.1935 Res £15
521. GREAT NORTHERN RAILWAY OF IRELAND-1934 Guide "Magic Miles in Ireland" with 56 pages and the insert map is still there-excellent condition Res £12
522. GREAT SOUTHERN RAILWAY OF IRELAND-Brochure offering a number of railway tours of Ireland [15 tours]. Undated, but Circa 1930 Res £12
523. SOUTHERN RAILWAY-"Party travel-go by train" booklet printed Circa 1950 offering all sorts of deals for the party outing Res £8
524. IRAQI STATE RAILWAYS-Superb condition 1936 timetable No.59 giving fares information from everywhere to everywhere on 57 pages-staples rusted, but everything else is superb Res £30
525. INDIA-A 1920 Second edition of the 53-page satirical & comic booklet "THE KOOCHPURWANAYPORE SWADESHI RAILWAY" Published by Thacker, Spink and Company of Calcutta and Simla. A very cleverly drawn and amusing fantasy, depicting events on an imaginary Indian Railway in the style of Heath Robinson. Lovely thing and very good condition throughout Res £25
526. BRIGHTON & HASTINGS SORTING CARRIAGE UP-Postcard cancelled by s/ring on 25.5.1912 and five pieces, two of which tied QV 1d lilac control singles U & V to piece on 30.6.1915-the official date of the invalidation of QV stamps-nice lot Res £40
527. BRIGHTON/S.C-S/ring on back of cover from Scotland dated 1.8.1895. Also, with framed NOT TO BE FOUND/132 of Brighton and on the front, the s/ring BRIGHTON STATION/R.L Returned Letter cancel dated 7.8.1895 Res £22
528. BRIGHTON/S.C-S/ring transit/receiver dated 8.10.1896 on postcard from Belgium Res £12

529. LONDON & BRIGHTON S.C/DAY UP-S/ring dated 11.5.1904 ties stamp to postcard addressed to Paris Res £9
530. LONDON & BRIGHTON S.C/DAY UP-Superb strike of the s/ring dated 30.12.1903 on postcard from Beeding to Essex Res £12
531. LONDON & BRIGHTON S.C/DAY DOWN-S/ring dated 13.11.[1899] without year slug [Wilson 460 rated "R"] on postcard from Germany Res £30
532. GREAT EASTERN RAILWAY LIVERPOOL STREET SUBURBAN STATION-Kingsway real photo postcard used 1915 showing a very busy concourse and platforms Res £15
533. PADDINGTON STATION-Real photo postcard showing masses of peoples waiting for the trains on both platforms Res £12
534. CANADIAN PACIFIC RAILWAY-Correspondence postcard addressed within London with GEO V perfin CPR tied by CRICKLEWOOD machine on 28.11.1914 Res £5
535. SWITZERLAND-10c postal stationery postcard addressed to Amsterdam, cancelled by d/ring ZURICH ST GALLEN CHUR ZURICH/BAHNHOF on 4.10.1909 with trip No.2556 Res £6
536. SWITZERLAND-Two postcards, one from Italy with ANBULANT/No.2 transit mark dated 24.1.1908 and the other with 10c tied by d/ring AMBULANT/+ with trip No.128 on 22.12.1911 Res £7
537. BROADSTAIRS STATION/KENT-D/ring dated 5.4.1912 cancels unpaid postcard. At left is the station tax mark 1d/737 Res £10
538. LAST RUN OF THE ORIENT EXPRESS-Small folder containing a commemorative medal and two covers, one from Paris and the other from Turkey marking the final run on 19.5.1977 Res £7
539. METROPOLITAN RAILWAY-EDW VII ½d newspaper wrapper with printed "NOTICE OF EXPIRY OF SEASON TICKET" addressed within London on 18.6.1910 Res £5
540. NARROW GAUGE RAILWAYS-Small selection of covers and stamps marking various events including WWII etc [8] Res £8
541. EDINBURGH 131-Postcard addressed to the North of Scotland with GEO V 1d tied by the single 131 numeral with two bars above and below. It is thought that this was the mark sparingly used for the link to the GNOS Sorting Carriage. Undated, but circa 1913 paying the ½d Late Fee Res £25

542. GRAND NORTHERN RAILWAY-Redirected cover from Worcester to Hereford to London to Brackley with circular M/NR in red ink struck on 20.8.1852. Also, superb circular framed E/NR on front of entire from London to Northwich Res £22
543. LONDON & DOVER SORTING CARRIAGE-Underpaid postcard from France to Surrey dated 18.5.1912 with hexagonal framed T/10/C.68 tax mark converted at the foreign branch to 1½d to pay Res £10
544. LONDON NEWHAVEN S.C-S/ring dated 17.10.1935 with index V of Holborn Viaduct ties 1½d Silver Jubilee value to postcard-further strike below Res £15
545. SHREWSBURY YORK T.P.O/1-D/rings dated 23.9.1973 cancels QEII registered 7p postal stationery envelope and added 3½p x 4 & 4½p x 4. Taxed 10p, the 10p due is tied by s/ring HADFIELD/HYDE CHESHIRE on 25.9.1973 Res £8
546. L&E/R.P.O-S/ring of the London & Exeter RPO on front of Late Fee paid cover from Charing Cross to Cardiff on 25.1.1871 Res £18
547. STATION MIXTURE-Includes Crewe squared circles Normanton duplex, Par s/ring Broadstairs d/ring and tax mark, Bath s/ring and Bridlington d/ring [6] Res £8
548. CREWE STATION/3-Squared circle dated 16.12.04 ties stamp to card to Manchester. Alongside is the distinctive 1d tax mark of Crewe Station and framed EXCEEDS LIMITS OF SIZE/591 of Oldham Res £12
549. PAR STATION R.S.O/CORNWALL-D/ring dated 12.9.1917 ties stamp to postcard and PENMAENMAWR R.S.O/CARNARVON dated 28.6.1908 and the same mark with R removed, dated 19.8.1920 Res £5
550. MISSENT TO/SOUTHAMPTON STATION-Unframed mark in black ink on front of cover addressed to Surrey on 15.6.1859 - **see illustration on page 16** Res £100
551. MIISSENT TO/BRISTOL STATION-Blue, unframed mark on front of unpaid cover from Torquay to Peterborough. On the back is the d/arc BRISTOL STATION dated 1.9.1851 - **see illustration on page 16** Res £100
552. U.S.A-Great Northern Railway printed envelope from Washington to Wilson Creek with black on blue GREAT NORTHERN RAILWAY VALUABLE PACKAGE Label at top right. Undated, circa 1930 Res £15

553. RAILWAY MISCELLANY-Swiss TPO of 1934, 1964 Swedish SODRA ST BANAN cover; Danish presentation pack of railway stamps of 1991 and Slovenia presentation pack of 1994-99 railway stamps Res £7
554. BRIGHTON RELATED TPO MARKS-BRIGHTON & HASTINGS SORTING CARRIAGE UP 1906 on postcard, LONDON & BRIGHTON S.C/DAY DOWN 1899 on German card [no year slug rated "R"; 1972 Brighton Belle cover; BRIGHTON/S.C 1892 [2], 1889, 1887 & 1893; LONDON & BRIGHTON S.C/DAY DOWN 1911 x 2, 1909 x 2, 1908 x 2 & 1912; LONDON & BRIGHTON S.C/DAY UP 1903; LONDON & BRIGHTON SORTING CARRIAGE 1914 x 2 & 1915 and LONDON & BRIGHTON S.C 1907 Mixed condition [20] Res £35
555. COLNE, LANCS RAILWAYS AND THE MAILS-Album pages with railway items related to Colne including waybills, bag labels, covers, letters including from the East Lancashire & Airedale Extension Railway of 1846 and a similar one from the Junction Railway of 1845 Res £25
556. SHROPSHIRE & MONTGOMERYSHIRE RAILWAY-Complete sheet of 6 x 2d red on white Railway Letter Stamps with controls from 859 to 864 Res £22
557. APPROX 130 QEII T.P.O Covers in two albums-very clean and at less than 4p each!! Res £5
558. WORLD Related railway items including stamps, covers and booklets Res £5
559. GB Commemorative railway postcards, covers and "Famous Trains" presentation pack [6] Res £5
560. Railway Newspaper Parcel stamps [Southern 3d x 3 & 4d] plus Festiniog and GWR Res £5
561. ITALY-Cover from Milan Station to Berlin 3.6.1940 with rectangular German censor markings Res £5
562. AUSTRALIA-Victoria Railways ½d, 1d, 2d & 5d values + 1/- NSW and 1d NZ Newspaper stamps [6] Res £5
563. MID HANTS RAILWAY-Covers, postcards and 11 sheetlets of railway letter stamps Res £5
564. GB-Illustrated FDC's for the railway issues in the 2,000's plus mint stamps, presentation packs and other-good lot-plenty of postage! Res £38
565. ALDERNEY & GUERNSEY-A similar lot to previous Res £12

566. GB-Railway themed stamps from 1967 to quite recent times. Mint, used, multiples including "post & go" Res £18
567. IRELAND-Stamps, mini-sheets and cover including pairs Res £10
568. ISLE OF MAN-Lovely lot of presentation packs, covers, cards and mini-sheets + others Res £25
569. JERSEY-A similar lot to the previous one Res £25
570. BLUEBELL RAILWAY-Excellent selection from the provisional overprints through including all mint stamps and mini-sheets Res £25
571. FESTINIOG RAILWAY-Excellent selection in superb condition includes overprints, surcharges, mini-sheets and ends at issue 71 Res £28
572. NENE VALLEY RAILWAY-Superb lot from the Extension Fund issue through includes mint stamps and mini-sheets etc. Res £28
573. NORTH YORKSHIRE MOORS RAILWAY Includes the less common "To be Called For" labels, mint stamps, mini-sheets etc.-superb lot Res £28
574. TALYLLYN RAILWAY-Brilliant lot includes the two 1/- surcharge sheets on 11d and right through later issues with mini-sheets, stamps and the odd cover Res £45
575. VALE OF RHEIDOL, WELSHPOOL & LLANFAIR and a host of smaller company railway letter stamps including Worth Valley Isle of Man steam Rly etc. etc. etc. Pristine lot Res £45
576. AFRICA-ALGERIA, ANGOLA, DAHOMEY, BENIN, BOTSWANA, BURKINA FASO, UPPER VOLTA and BURUNDI-Superb lot of thematics in superb condition, mint, some used and mini-sheets and postal stationery etc. Res £30
577. AFRICA-CAMEROONS, CENTRAL AFRICAN REPUBLIC, CENTRAL AFRICAN EMPIRE, TCHAD, COMORES & CONGO. Again, a superb lot in excellent condition Res £30
578. AFRICA-DJIBOUTI, FRENCH SOMAILIA, EGYPT, ERITREA and ETHIOPIA-Another superb collection of thematics Res £25
579. AFRICA-GABON, GUINEA, GAMBIA, GHANA, GOLD COAST, GUINEA BISAU, EQUATORIAL GUINEA and IVORY COAST-Brilliant lot of thematics etc. Res £30

580. AFRICA-K.U.T Pre-Independence issues including GEO V 5/- unused plus individual country collections from Kenya, Uganda and Tanzania Res £35
581. AFRICA-LESOTHO, LIBERIA, LIBYA, MADAGASCAR and MALAWI-Another great lot of thematics Res £25
582. AFRICA-NYASALAND with GEO VI & QEII 10/- values, MALAWI, MALI, MAURITANIA, MAURITIUS, SPANISH MOROCCO, MOROCCO and MOZAMBIQUE-Another great lot of thematics includes mini sheets, stamps and the odd cover Res £25
583. AFRICA-NAMIBIA including South West Africa pairs + Officials, NIGER and NIGERIA-Same again-lovely lot Res £25
584. AFRICA-Former SPANISH SAHARA, SAO TOME & PRINCIPE, SENEGAL-NIGER Combination issues, SENEGAL and SIERRA LEONE Res £25
585. AFRICA-SOMALIA, SOMALI REPUBLIC, SOUTH AFRICA & STATES, SOUTH AFRICAN HOMELANDS, SWAZILAND & TOGO Res £25
586. AFRICA-BELGIAN CONGO Surcharges, overprints etc + ZAIRE, SOUTHERN RHODESIA, ZIMBABWE, NORTHERN RHODESIA and ZAMBIA-Another great lot of thematics Res £25
587. EUROPE-ALBANIA, AUSTRIA, BELGIUM, CUBA and BULGARIA-Very good lot Res £25
588. EUROPE-CYPRUS, TURKISH CYPRUS, CZECHOSLOVAKIA, BOHEMIA & MORAVIA, CZECH REPUBLIC, SLOVAKIA, DENMARK, ESTONIA, FINLAND and FRANCE-Lovely lot of stamps, covers, mini-sheets etc. Res £25
589. EUROPE-GERMANY including East, West, Berlin and Bavarian State Railways etc-very good selection of nice items Res £22
590. EUROPE-GIBRALTAR, GREECE Including Red Cross inverted overprint & HUNGARY-Another very good lot of thematics Res £22
591. EUROPE-ITALY, LATVIA, LITHUANIA and LUXEMBURG Including Official overprints etc.-More of the same-excellent selection Res £22
592. EUROPE-MONACO, NETHERLANDS, NORWAY, POLAND and PORTUGAL-Another very clean and attractive selection of railway thematic stamps etc Res £22

593. EUROPE-ROMANIA Selection of mini-sheets, mint & used stamps etc Res £15
594. EUROPE-PARIAH STATE OF RUSSIA and a few RUSSIAN REPUBLICS-Both Soviet and after; another good lot Res £25
595. EUROPE-SAN MARINO, SPAIN, SWEDEN, SWITZERLAND, VATICAN CITY, YUGOSLAVIA and subsequent states of the former Yugoslavia-another bumper lot Res £25

END OF AUCTION LOTS
GOOD LUCK WITH YOUR BIDS

MORE IN THE SUMMER AUCTION
MORE LOTS NEEDED - COME ON, HAVE THAT
LONG AWAITED AND NEEDED SORT OUT!!