



## RAILWAY PHILATELIC GROUP AUCTION 2023/24

ALL BIDS WILL CLOSE AT 12.00 NOON ON WEDNESDAY  
THE 2<sup>ND</sup> OCTOBER 2024

I HAVE HAD A BAD STROKE WHICH LEFT ME BLIND, SO  
HAVE CHANGED THE DATE - I HOPE THIS IS OK FOR  
EVERYONE.

### BILL

ALL LOTS CAN BE VIEWED AS SCANS - THOSE WHO  
WOULD LIKE PHOTOCOPIES ARE KINDLY REQUESTED TO  
PROVIDE A STAMPED AND ADDRESSED ENVELOPE

ALL LOTS ARE A MINIMUM OF \*\*\*/\*\*\*\*



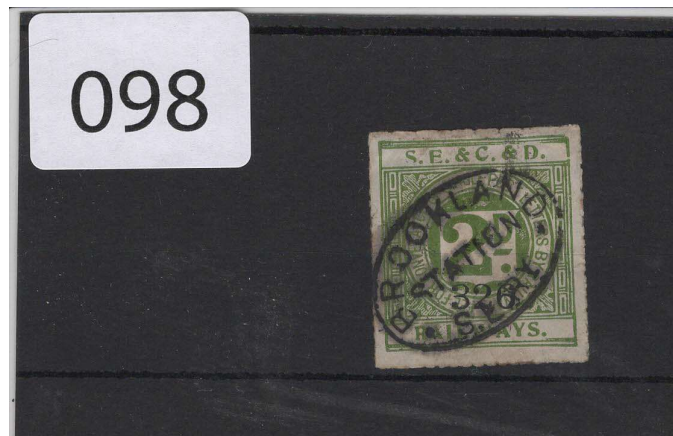
047



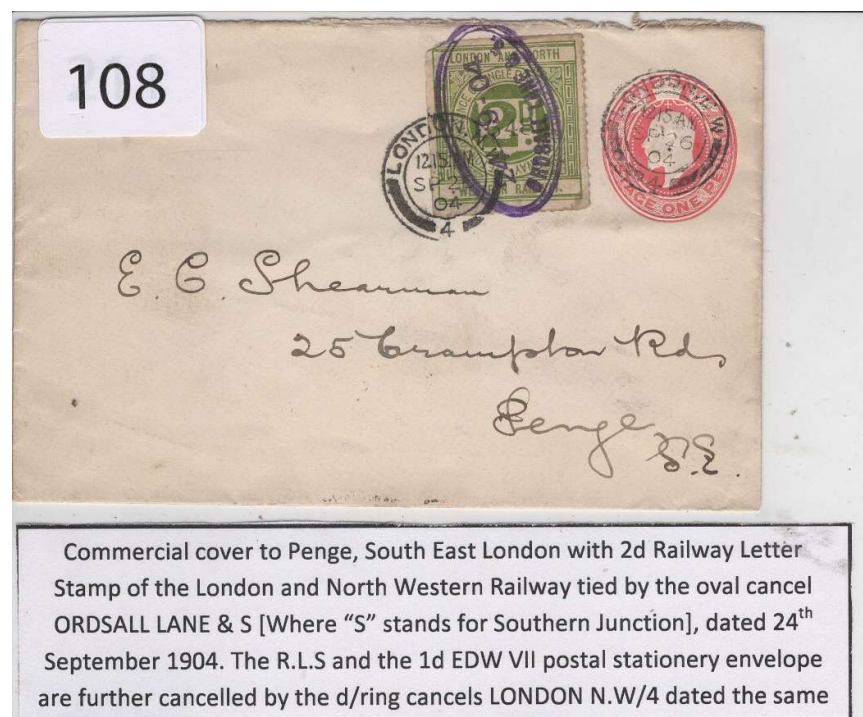
2d DEEP BLUE IMPERF  
GUMMED PROOF ON THIN  
PAPER WITHOUT CONTROL  
No.

084









246



JHANSI RY STN.

192



BOURNVILLE WORKS & STATION

on an external website: [www.paperheritage.co.uk/rpg/rpg.html](http://www.paperheritage.co.uk/rpg/rpg.html)

1. **Cambrian Railways / GWR** 1926 Wilson cover, roughly opened, Cambrian Railways 4d with part GWR rectangular h/st (per Lacy-Spencer Appendix 1) violet cancel FRANKTON / G.W.37 & 7 JUNE 1926. On Oswestry - Whitchurch line. RARE. Res. £220.00
2. **GWR LS1** on slightly grubby 1892 cover to Oxford Street, London. QV 1d and RLS stamps cancelled 'P14 PADDINGTON' duplex MR 24 (18)92. 'London W' cds on back. Res. £85.00
3. **GWR LS2** : foxed, roughly opened 1897 cover from Sir T. Fowler (who lived at CORSHAM) to Chippenham, franked 2 x 1897 Jubilee issue, 'CHIPPENHAM 191' duplex cancel. JY 15 97. Res. £48.00
4. **GWR LS4** on roughly opened (torn away at top) 1902 EXPRESS cover cancelled at CHELTENHAM, franked 4 x ED VII 1d. JY 15 97. m/s 'Express from P/Office' and 'To be posted en route' instructions. Royal Mail oval EXPRESS h/st, RLS cancel is str./l. CHELTENHAM in Violet, stamp partly folded onto back of envelope. A most interesting cover. Res. £140.00
5. **GWR LS4** on neat Ewen cover from ADDERBURY to Norwood, a stain clear of stamps, m/s notation and RLS both dated Feb 10 1910 but RLS and EDVII 1d both tied by PADDINGTON machine cancel Feb 9 1910 (date error by GWR clerk is the more likely). Adderbury on Banbury-Chipping Norton / Kingham line. Res. £120.00
6. **GWR LS1** Selection of 3 x LS1 : ~ On piece with QV 1d FALMOUTH cancel, RLS with m/s 2/3/91 in black pen; ~ Single with CHELTENHAM OC 9 91 cancel, violet rly h/st cannot fully read --ANACE or similar; ~ Single with PADDINGTON JA 2 92 cancel Res. £12.00
7. **GWR LS1** single with full strike of 'MARY TAVEY / STATION / G.W.RY' oval. Res. £20.00
8. **GWR LS1** with most unusual m/s cancel : Camborne / to / Truro / 9/12/91 , part hinge still attached, very fine. Res. £36.00
9. **GWR LS2** four singles, royal mail cancels CREWE STATION cds (pale);
10. **G.C.R. 4d Dark Blue PERF Newspaper** stamp used horiz. pair on paper (small figures 48085/86), plus a MINT (with gum, small thin) **6d** Newspaper stamp in the Light Blue, perforated, large figures 4110 (3) Res. £9.00
11. **G.C.R. Set/6 Blue used Newspaper** stamps, ½d, 1d, 2d, 3d, 4d, 6d, ALL ROULETTED. 1d & 6d Small Numerals, others Large (6) Res. £18.00
12. **G.C.R. PERFORATED Blue Newspaper** stamps, used, four values : 1d, 2d, 3d, 4d. The 4d has Small Numerals, rest Large. (4) Res. £8.00
13. **L.M.S. Scotland Eight Parcel** stamps (red), all from Scottish stations: 3d Stirling; 9d (deep orange) Glasg. Buch. St., 10d Kilm'k; 11d Edinb; 11d Dumfries; 2/- Stirling; 2/- & 4/- Glasg. St. Enoch. Used(8) Res. £12.00

14. **L.M.S. Bute & Arran** Four Parcel stamps, two each from Bute & Isle of Arran : Rothesay Pier 1/- Orange (corner fault); 2/- Rothesay Orange (small nick); 3d Kildonan (dull red, used 1937); 2/6 Pale Rose Ardrossan with BRODICK h/st. Used (4) Res. £10.00
15. **M & G.N. Joint Com. Newspaper** stamps (4), 1d 3d & 8d No Gum, 2d m/m Res. £12.00
16. **Southern Railway Poster Stamps** Rarely seen stamps (one with pin holes) on page, from 23 Feb 1935 Mapping 'issue' in Children's Newspaper (5, m/m): Seaford; Seaton, Swanage, Weymouth, Whitstable. Also, page of mini railway poster cut-outs, various rlys(9) Res. £14.00
17. **SR, GWR, LMS etc 1936 Poster Stamps** on 4 pages, mixed no gum & m/m, from 28 Mar-30 May 1936 Children's Newspaper 'issues', stamps : Bexhill, York, Blackpool, Southend, Buxton, Clacton, Lowestoft, Gt. Yarm., Rhyl, Aberystwyth, Folkestone, Hastings, Ramsgate, St. Ives, Skegness, Bridlington, Felixstowe, Eastbourne, Newquay, Colwyn Bay, Fleetwood, Denby, Southsea, Deal, Morecambe, Hereford, Torquay, Poole, Chester (29). Attractive Group. Res. £38.00
18. **Romney Hythe & Dymchurch Rly #10a** (20p/15p 'Hurricane' black of surcharge omitted) in a full u/m, unfolded sheet of 25, probably unique. 1996 Oakley (40 x £25 = £1000). Plate 1B. Res. £280.00
19. **RH&DR #9** (20p/10p 'Winston Churchill' First Ptg.) in a full u/m, unfolded sheet of 25, surcharge in COPPER (see next lot). Plate 1B. Res. £95.00
20. **RH&DR #9b** (20p/10p 'Winston Churchill' Second Ptg.) in a full u/m, unfolded sheet of 25, surcharge in BRASS (see previous lot). Plate 1B. The Copper surcharge has a reddish-tinge, absent from this 'Brass' ptg. Res. £90.00
21. **RH&DR #13-16**, TWO sheets/12, one imperforate, Plate AAB. Second sheet is an incomplete proof with Roulettes misplaced 6mms down AND 7mms left, no Plate Number, inscriptions on stamps and sheet margins incomplete. (2 sheets/12) Mint. Res. £42.00
22. **Ffestiniog Rly #16a** - the 'impossible' sheet/12, hinged together on a card. Since most #16a (vermilion surch.) were used on fdc's, mint copies are rarely seen. It is unlikely a complete mint sheet of #16a was ever sold. Someone has soaked stamps off 12 fdc & 'reconstructed' a sheet/12 within sheet margin 02046 (from a 16, not 16a, sheet). Different! (12 x #16a from fdc) Res. £48.00
23. **Ffestiniog Rly COLLECTION** : 10 Different sheets/12, all u/m : #1, 1a, 1b, 2, 2b, 3, 3b, 4, 5, 6. Res. £80.00
24. **Welshpool & Llanfair Rly #1-4** in complete u/m, unfolded sheet/12 stamps (3 sets) Res. £38.00
25. **Welshpool & Llanfair Rly #6-9** in complete u/m, once folded sheet/12 stamps (3 sets). Uncommon. Res. £42.00

26. **Ravenglass & Eskdale Rly #10** (Silver Jubilee) in u/m sheet/12, unfolded. Res. £14.00
27. **Ravenglass & Eskdale Rly #11** (Silver Jubilee, surcharged) in u/m sheet/12, once folded. Res. £16.00
28. **Welshpool & Llanfair Rly #17** in complete u/m sheet/12 stamps with VARIETY odd-numbered sheet (this is sheet 111) with Welsh rather than English inscriptions. Scarce thus. Res. £16.00
29. **Talylyn Rly #35** (1969 Investiture) PROOF sheet/10 in only two colours, only Cyan and Magenta, u/m, Plate 1A, pin holes in top margin area. Scarce. Res. £80.00
30. **West Somerset Rly #3/4** : SPECIMEN sheet/10, postmaster signed (No. 5 of 30) + Colour Proof Pair Imperf + Colour Trial Pair in Black Imperf (14). All u/m - superb group. Res. £38.00
31. **GB : International Tramways & Light Railways Exhbn., London 1902** : Exceptional range of 7 poster / exhibitor stamps. The general stamp (2) in Vermilion and in Carmine; the Exhibitor stamp but without 'Stand' attribution (sample); Individual Exhibitor Stamps (4) for Stands 9, 59, 85 (small rub), 100. Fresh m/m or no gum, a very scarce group. Res. £32.00
32. **Railway Pot-Pourri** : Modern poster stamps trams / trains Le Mans & La Sarthe; French, Algerian (with 1Fr tete-beche pair mng), Danish, GB & Queensland rly parcel stamps, France 1937 poster stamps set/4, thematics incl. Algerian booklet, Trieste B UPU used set/2 etc. (78 + 1 m/s + 1 fdc). Res. £24.00
33. **GREAT EASTERN RAILWAY**-Four pieces, each with a 2d RLS & EDW VII 1d value used at GRIMSBY, DONCASTER, BARNLEY & MANCHESTER during June 1905 [4] Res £12
34. **MIDLAND & GREAT NORTHERN JOINT COMMITTEE**-4d on 3d on 2d RLS in unused condition-scarce stamp-few toned perfs at right Res £22
35. **LONDON & NORTH EASTERN RAILWAY NORTH EAST SECTION**-Top lefthand corner marginal pair of the 4d RLS in unused condition Res £12
36. **DUNDALK, NEWRY & GREENORE RAILWAY**-2d RLS with control 543 in unused condition Res £15
37. **WIRRAL RAILWAY-LARGE TYPE** 2d RLS from the bottom right corner of the sheet in unused condition Res £15
38. **GREAT CENTRAL RAILWAY**-Pair of the 2d RLS from the 1<sup>st</sup> issue of 1897 [2] Res £9
39. **GREAT CENTRAL & NORTH STAFFS RAILWAY**-4d on 2d final issue with a blue-green surcharge 4 applied 1925 Res £22
40. **GREAT CENTRAL & NORTH STAFFS RAILWAY**-Pair of the 8<sup>th</sup> printing 4d values of 1920-unused [2] Res £10
41. **PORT TALBOT RLY & DOCKS Co.**-Red overprint on 4d GWR RLS in unused condition-only 240 issued in 1920 Res £25



- 42.PORT TALBOT RLY & DOCKS Co.-Mint 2d RLS with red overprint on GWR 2d and with control 167605 in mint condition-only 240 issued 1919 Res £25
- 43.PORT TALBOT RAILWAY AND DOCKS Co.-Two of the 2d RLS from the 1<sup>st</sup> printing of Feb 1901-one is better than the other! [2] Res £9
- 44.LONDON & NORTH EASTERN RAILWAY-4d RLS from the June 1925 7<sup>th</sup> printing-unused Res £8
- 45.METROPOLITAN & GREAT CENTRAL JOINT COMMITTEE-3d RLS from the top left of the pane in unused condition and with control A/1366 Res £12
- 46.METROPOLITAN & GREAT CENTRAL JOINT COMMITTEE-2d blue RLS with control 3999 from the 1907 issue Res £8
- 47.METROPOLITAN & GREAT CENTRAL RAILWAY JOINT COMMITTEE-Imperf gummed proof on thin paper and without control-scarce item-see illustration Res £35
- 48.OLDHAM, ASHTON & GUIDE BRIDGE RAILWAY-2d RLS from the top right of a sheet of the Nov 1898 third printing-unused Res £35
- 49.OLDHAM, ASHTON & GUIDE BRIDGE RAILWAY-2d RLS from the right of the sheet 1<sup>st</sup> issue Res £40
- 50.DONEGAL RAILWAY-Two RLS from the 1<sup>st</sup> & 4<sup>th</sup> printings in unused condition [2] Res £12
- 51.ISLE OF WIGHT CENTRAL RAILWAY-2d RLS, cancelled by a small ink cross-see illustration Res £25
- 52.CAVAN & LEITRIM RAILWAY-Block of four in mint condition from the top left of the sheet from the 1<sup>st</sup> printing of 1901[4] Res £20
- 53.NORTH EASTERN RAILWAY-IMPERF PAIR of the 2d RLS without control numbers in mint condition-see illustration [2] Res £40
- 54.METROPOLITAN & GREAT CENTRAL RAILWAY JOINT COMMITTEE- 2d (blue) IMPERF Proof in mint condition Res £28
- 55.METROPOLITAN RAILWAY-4d RLS with manuscript 3d surcharge in black [control 1289] Res £22
- 56.GREAT CENTRAL RAILWAY-Reconstructed pane from the 4<sup>th</sup> printing [dark green] type 2, number 2 pane [12] Res £22
- 57.LONDON & NORTH EASTERN RAILWAY NORTH BRITISH SECTION-4d RLS from the top left of sheet in unused condition Res £8
- 58.GREAT CENTRAL RAILWAY-Reconstructed pane of the 4d RLS from the 1<sup>st</sup> 4d printing-includes pairs & strips [12] Res £15
- 59.LONDON & NORTH WESTERN RAILWAY-2d RLS with uncommon GUARD CANCEL of T BLUNT/EUSTON in violet Res £12
- 60.NORTH EASTERN RAILWAY-2d RLS with uncommon GUARD CANCEL of W WETHERIL/N.E YORK in violet ink Res £15
- 61.NORTH WALES & LIVERPOOL RAILWAY-Used 2d RLS from the 1<sup>st</sup> issue tied to piece by parallel line ink cancels Res £40

62. NORTH WALES & LIVERPOOL RAILWAY-Unused pair from the bottom left of the sheet and from the 2<sup>nd</sup> printing [2] Res £60
63. EAST & WEST JUNCTION RAILWAY-Complete sheet of 12 x 2d red on yellow RLS with controls 4560-4571 in mint condition [12] Res £30
64. NORTH EASTERN RAILWAY-Corner bottom left block of four of the 2d 85<sup>th</sup> issue of October 1910 unmounted mint [4] Res £10
65. NORTH EASTERN RAILWAY-Corner top right block of 4 x 2d RLS from the 86<sup>th</sup> issue of Dec 1907-top 2 stamps m/mint [4] Res £10
66. NORTH EASTERN RAILWAY-Top right corner block of 4 x 2d RLS from the 87<sup>th</sup> issue of February 1908 unmounted mint [4] Res £10
67. NORTH EASTERN RAILWAY-Block of 4 x 2d RLS from the right of the sheet of the May 1908 88<sup>th</sup> printing-one stamp mounted [4] Res £20
68. NORTH EASTERN RAILWAY-Top right corner block of 4 x 2d RLS from the 89<sup>th</sup> printing of July 1908 [4] Res £20
69. NORTH EASTERN RAILWAY-Top left corner block of 4 x 2d RLS from the 92<sup>nd</sup> printing of February 1909-unmounted mint [4] Res £15
70. NORTH EASTERN RAILWAY-Top left corner block of 4 x 2d RLS from the 93<sup>rd</sup> printing of April 1909-m/mint [4] Res £12
71. NORTH EASTERN RAILWAY-Top left corner block of 4 x 2d RLS from the 94<sup>th</sup> printing of June 1909-m/mint [4] Res £12
72. NORTH EASTERN RAILWAY-Right side block of 4 x 2d RLS from the 97<sup>th</sup> printing of December 1909-unmounted mint [4] Res £20
73. NORTH EASTERN RAILWAY-Top right corner block of 4 x 2d RLS from the 100<sup>th</sup> printing of June 1910-unmounted mint [4] Res £15
74. NORTH EASTERN RAILWAY-Block of 4 x 2d RLS from the 104<sup>th</sup> printing of March 1911-unmounted mint [4] Res £15
75. NORTH EASTERN RAILWAY-Top right corner block of 4 x 2d RLS from the 112<sup>th</sup> printing of 1912 [4] Res £50
76. NORTH EASTERN RAILWAY-Right side block of 4 x 3d on 2d RLS from the 147<sup>th</sup> printing of 1920-u/m mint-see illustration [4] Res £25
77. NORTH EASTERN RAILWAY-Single 2d RLS with a pencil 4d surcharge on control 274536 from issue 151b mounted mint Res £8
78. NORTH EASTERN RAILWAY-UNLISTED 3d on manuscript 4d on 2d RLS with control 473772 unmounted mint-see illustration Res £30
79. NORTH EASTERN RAILWAY-Bottom right corner block of 4 x 4d RLS from the 162<sup>nd</sup> issue-m/mint-one hinge centrally [4] Res £20
80. NORTH EASTERN RAILWAY-Bottom right corner block of 4 x 4d RLS from the 166<sup>th</sup> printing-two stamps lightly m/mint Res £40
81. MANCHESTER, SOUTH JUNCTION & ALTRINCHAM RAILWAY-2d RLS with control A912 from the 12<sup>th</sup> issue of 1919-l/mounted Res £12
82. RHYMNEY RAILWAY-Nice used example of the 2d RLS from the 1<sup>st</sup> issue with strong ink cross cancel and control 1716 Res £20

83. RHYMNEY RAILWAY-Lightly mounted 2d RLS from the 1<sup>st</sup> issue with control 533 and with roulette perfs Res £10
84. RHYMNEY RAILWAY-Manuscript 4d on 3d RLS with control number 5-mounted mint and UNPRICED by de Lacy-Spencer – see illustration Res £30
85. WREXHAM, MOLD & CONNAHS QUAY RAILWAY-Unused 2d RLS from the one and only issue with control 692 Res £5
86. NORTH WALES & LIVERPOOL RAILWAY COMMITTEE-Unused 2d RLS from the 1<sup>st</sup> issue Res £30
87. SEVERN AND WYE AND SEVERN BRIDGE RAILWAY-Unused 1<sup>st</sup> issue 2d RLS from the bottom right of the sheet stuck to piece but not cancelled Res £8
88. WREXHAM, MOLD & CONNAHS QUAY RAILWAY-Unused example of the only issue 2d RLS with control 290 Res £5
89. CLEATOR & WORKINGTON JUNCTION RAILWAY-2d RLS from the left of the sheet and the 2<sup>nd</sup> issue-superb unmounted mint Res £7
90. OLDHAM, ASHTON & GUIDE BRIDGE RAILWAY-2d RLS from the 1<sup>st</sup> issue of January 1891 and from the bottom left corner of the sheet-unmounted mint and scarce as such Res £35
91. WEST CLARE RAILWAY-2d RLS from the 2<sup>nd</sup> issue-mint, no gum, but clean Res £4
92. WREXHAM, MOLD & CONNAHS QUAY RAILWAY-2d RLS from the only issue with control 921 Res £5
93. DUNDEE & ARBROATH JOINT RAILWAY-2d RLS from the 1<sup>st</sup> issue of January 1891-unused Res £8
94. SOUTHERN RAILWAY-COMPLETE SHEET of the 4d RLS from the 5<sup>th</sup> issue of 1925 perf 14 x 12-top 3 stamps are m/mint-stamps catalogued at £300 in year 2000 [12] Res £70
95. SOMERSET & DORSET RAILWAY-COMPLETE SHEET of the 4d RLS with controls A7541-A7552-two stamps very l/m/m Res £45
96. GREAT EASTERN RAILWAY-QV 1d red plate No.138 with the scarce G.E.R UNDERPRINT in red ink-used Res £25
97. LONDON, BRIGHTON AND SC RAILWAY. 2d RLS cancelled by oval undated telegraphic cancel SELHAM / station / L.B.&SC RY. Res £8
98. SOUTH EASTERN AND CHATHAM AND DOVER RAILWAYS. 2d RLS cancelled by oval undated telegraphic cancel BROOKLAND / station / SE&CRY. Res £10
99. SOUTH EASTERN AND CHATHAM AND DOVER RAILWAYS. 2d RLS cancelled by oval undated telegraphic cancel RAMSGATE / station / SEC&DRY
100. NORTHEASTERN RAILWAY. Cover to London with RLS 124034 tied by pencil cross. The added pair of QV ½ d blue-green are tied by NORTH ALLERTON 569 DUPLEX cancel dated 2.8.1901. Res £85

101. CALEDONIAN RAILWAY-COVER to London with 2d RLS cancelled by ink cross and LONDON N.W squared circle on 22.6.1905-the added 1d is similarly tied Res £65
102. SOUTH EASTERN & CHATHAM RAILWAY-George King cover addressed to him in London with 4d RLS with control 24300 cancelled by s/line dater 22 SEP 1923 in violet ink. The added GEO V ½d & 1d values are similarly cancelled-very clean and attractive Res £80
103. LONDON & SOUTH WESTERN RAILWAY-Mourning cover addressed to West Moors with “IMMEDIATE” at top left and a 2d RLS alongside, cancelled by two strikes of the s/line VERWOOD in the form of across and in violet ink-sadly, the postage stamp at top right has been removed, leaving just the V of Verwood showing Res £45
104. MIDLAND RAILWAY-QV 1d pink envelope to Widnes with 2d RLS with control 26418 and the stamp impression cancelled by ink crosses and duplexes NORMANTON STATION-048 on 1.2.93-anniversary of the introduction of RLS!! Some light foxing will clear up – see illustration Res £100
105. GREAT CENTRAL & MIDLAND JOINT COMMITTEE-Manuscript 4d on 3d RLS tied by a handmade violet inked cross to a cover addressed to Manchester [Wilson]. The added GEO V ½d & 1½d values and the RLS are tied by MANCHESTER/M machine on 15.2.21 Res £100
106. LANCASHIRE & YORKSHIRE RAILWAY-Commercial cover addressed to Pontefract with 2d RLS control 7600 tied by black ink strokes. The EDW VII 1d is tied by PONTEFRACT d/ring on 5.5.02 – see illustration Res £70
107. SOUTH EASTERN RAILWAY-Commercial cover addressed to Martins bank, Bromley with 2d RLS control 22575 and 1d lilac tied by BROMLEY/KENT-144 duplex cancel on 7.11.1894-nice!! Res £100
108. LONDON & NORTH WESTERN RAILWAY-Commercial EDW VII 1d postal stationery env to Penge with added 2d RLS tied by LONDON N.W/4 d/ring and by oval ORDSALL LANE & S dated 24.9.1904 – see illustration Res £80
109. GREAT CENTRAL & MIDLAND JOINT COMMITTEE-3d RLS on cover tied by unframed G.C & M JT COMMITTEE/ MARPLE PASSENGER on 30.1.1921 Res £100
110. TALYLLYN RAILWAY-Cover addressed to Gloucester Central Station to be called for with 1/- on 11d surcharge value tied by company cancel as is the 3d Welsh regional stamp. On the back is a Talyllyn Railway publicity label Res £55
111. TALYLLYN RAILWAY-Complete sheet of the 1/- on 11d values with red stamp at top left Res £50



112. LONDON, MIDLAND & SCOTTISH RAILWAY-9d parcel stamp issued at ARDROSSAN/S.V.O and cancelled by s/line WHITING BAY-Scarce from the Scottish Islands Res £20
113. NORTHEASTERN RAILWAY. 3d newspaper parcel stamp cancelled by oval Yorkshire post cancel known to be Leeds. Res £5
114. GREAT WESTERN RAILWAY. 3 d prepaid newspaper parcel stamp with horizontal red bar across centre and without control numbers – unused. Res £7
115. BARRY RAILWAY-3d black on pink prepaid newspaper parcel stamp, mint Res £18
116. TAFF VALE RAILWAY-1<sup>st</sup> type 1d black on white Newspaper Parcel stamp with Edwards facsimile signature-used Res £15
117. NORTHAMPTON & BANBURY JUNCTION RAILWAY-1 Newspaper Only green stripe on black on violet stamp with blue pencil cancel Res £10
118. GREAT EASTERN RAILWAY-Less common 3d surcharge overprint on 2d “Four Newspapers” stamp tied to piece by BROXBORNE/CANCELLED s/ring on 1.7.1920 Res £20
119. GREAT WESTERN RAILWAY-1 Newspapers Only green stripe on black on orange stamp with the error of “S” after newspaper from the short-lived Die I-see following item Res £22
120. GREAT WESTERN RAILWAY-1 Newspaper Only green stripe on black on orange stamp, unused from the corrected first die with “S” removed Res £12
121. BEIRA & MASHONALAND & RHODESIA RAILWAYS-1d Prepaid Newspaper Parcel Stamp, unused Res £15
122. BEIRA & MASHONALAND RAILWAYS-1d Prepaid Newspaper Parcel stamp, unused Res £15
123. QUEENSLAND RAILWAYS-3d x 2 & 5d & 6d “Newspapers and Parcels” stamps used from ROMA 3d & 5d and ROMA ST., 3d & 6d-all used [4] Res £12
124. GREAT CENTRAL RAILWAY-8d, 9d, 10d & 11d prepaid parcel stamps used Rugby, Kirksby Pinxton, Filsley & ??? [4] Res £12
125. GREAT CENTRAL RAILWAY-2/- loco value issued at and used from RUGBY Res £5
126. GREAT CENTRAL RAILWAY-2/- & 2/6d loco prepaid parcel stamps both used and issued at NOTTINGHAM VICTORIA PARCEL OFFICES [2] Res £9
127. GREAT CENTRAL RAILWAY-4d loco prepaid parcel stamp issued and used from ROTHERHAM & MASBORO’ Res £4
128. GREAT CENTRAL RAILWAY [M.S & L RY] Pair of ½d blue on white newspaper parcel stamps, unused from the 1897 issue [2] Res £8

129. GREAT CENTRAL RAILWAY [M.S & L RY]-Used 1d, 2d, 3d, 4d & 6d blue on white values from the 1897 issue [5] Res £12
130. GREAT CENTRAL RAILWAY-[M.S & L RY]-Used 1d, 2d, 3d & 4d blue on white values from the 1897 perf 12 issue [4] Res £10
131. GREAT CENTRAL RAILWAY-Horizontal strip of 3 x 1d newspaper parcel stamps from the 1899 issue, unused [3] Res £10
132. GREAT CENTRAL RAILWAY-Block of 4 x 1d newspaper parcel stamps in a very deep blue shade from the 1899 issue, mint [4] Res £15
133. GREAT CENTRAL RAILWAY-Roulette perf ½d, 2d & 3d newspaper parcel stamps from the 1905 issue [3] Res £12
134. GREAT CENTRAL RAILWAY-Block of 4 x ½d roulette perf newspaper parcel stamps from the 1905 issue, mint [4] Res £18
135. GREAT CENTRAL RAILWAY-Mint block of 4 x 3d roulette perf newspaper parcel stamps from the 1905 issue [4] Res £22
136. GREAT CENTRAL RAILWAY-Mint block of 4 x 4d roulette perf newspaper parcel stamps from the 1905 issue [4] Res £22
137. GREAT CENTRAL RAILWAY-Vertical pair of the 6d black on buff/yellow loco prepaid parcel stamps issued at and used from NOTTINGHAM VICTORIA [2] Res £9
138. GREAT CENTRAL RAILWAY-6d, 7d, 9d & 2/- black on yellow/buff prepaid parcel stamps all issued from and used from NOTTINGHAM VICTORIA [4] Res £15
139. GREAT CENTRAL RAILWAY-9d & 2/- black on yellow/buff loco prepaid parcel stamps used and issued from NOTTINGHAM VICTORIA [2] Res £10
140. GREAT WESTERN RAILWAY-BISECTED 1d prepaid newspaper parcel stamp [control 316003] on part wrapper tied by ink cross cancel-see illustration Res £22
141. GREAT NORTHERN RAILWAY-IMPERF PROOF Pair of ½d "One Newspaper" stamps on normal, un-gummed paper Res £35
142. GREAT EASTERN RAILWAY-Strip of 3 x 1d "Newspapers in Bulk" stamps on piece and cancelled by NEWMARKET/DATE/CANCELLED on 22.4.1908 [3] Res £12
143. GREAT EASTERN RAILWAY-Less common 3d red surcharge overprint on 2d "Four Newspapers" stamp tied to piece by BROXBORNE/DATE /CANCELLED on 30.9.1920 Res £20
144. GREAT NORTHERN RAILWAY-Two strips of 3 and a single 1d prepaid parcel stamp on piece [7] Res £10
145. MIDLAND RAILWAY-Two strips of 3 and a single 1d prepaid newspaper parcels stamp tied to piece by pencil squiggle [7] Res £10
146. KENT & EAST SUSSEX RAILWAY-11d prepaid parcel stamp, unused from HIGH HALDEN ROAD Station Res £4

147. SOUTHERN RAILWAY-Selection of various values used from various stations-mixed condition [7] Res £5
148. RODWELL STATION, WEYMOUTH-Coloured card showing people on the station-unused Res £12
149. CENTRAL STATION, BOURNEMOUTH-Real photo postcard showing train and people on the station-unused Res £12
150. PETERSFIELD STATION-Black & white postcard showing train & people on the station-unused Res £12
151. RADLETT STATION, HERTS-Coloured postcard used in 1909 showing an almost empty station Res £12
152. GREAT NORTHERN RAILWAY STATION, ROYSTON-Kingsway real photo postcard showing train and lots of people on the station-used 1913 Res £25
153. CANONBIE STATION-Coloured card showing staff and passengers on the station-unused Res £12
154. SHEFFIELD MIDLAND STATION-Unused Kingsway real photo postcard showing train & staff on the station Res £22
155. THORNTON STATION, NEAR FLEETWOOD-Coloured postcard of 1905, unused and showing approaching train and passengers Res £18
156. LEVENSHUME STATION-Exterior view of the station and surrounding housing, used 1906 Res £12
157. NORTHWICH STATION-Coloured postcard showing passengers on the station-unused Res £10
158. PADDINGTON STATION-Real photo card from No.1 platform showing serviceman and 100's of others waiting -used 1913 Res £10
159. LONDON BRIDGE STATION-Tucks Oilette from the "London Railway Stations" series showing staff and passengers, lots of parcels and luggage-unused Res £8
160. BROAD STREET STATION-Tucks Oilette as previous lots with a view from the outside Res £7
161. EBBW VALE L & N.W Station coloured postcard showing sidings, wagons etc.-unused Res £15
162. PONTLLANFRAITH GWR STATION Near Blackwood-Real photo distant view of the station with train alongside-unused Res £18
163. BIRDWELL & HOYLAND COMMON STATION-Real photo postcard showing staff and passengers on the station-used 1921 Res £22
164. WHYTELEAFE STATION-Black and white postcard showing a train approaching the station-used 1906 Res £15
165. MITCHAM JUNCTION-Real photo postcard showing train approaching the station-unused 1926 Res £22
166. ALL HALLOWS ON SEA STATION-Real photo postcard of the station from the outside showing platforms etc.-used 1949 Res £15

167. HULME END STATION-Real photo postcard showing the empty station with an old Great North of Scotland carriage now being used as a bike shed-unused Res £18
168. MANIFOLD RAILWAY, TRAIN AT HULME END-Black & white postcard showing train, staff and customers on the platform-unused Res £18
169. SHEPHERD'S BUSH TWOPENNY TUBE-Black & white postcard showing the booking office and queue-used 1905 Res £15
170. BICKLEY STATION, KENT-Black & white postcard of the station and platforms-used 1906 Res £20
171. MUMPS STATION, OLDHAM-Coloured postcard of the station and platforms-unused Res £15
172. NEWBRIDGE STATION-Sepia photographic postcard showing train and passengers at the station-used 1917 Res £15
173. NARBOROUGH & PENTLEY STATION-Black & white postcard showing the station & platforms-unused Res £12
174. LOOE STATION-Unused coloured postcard showing train and passengers etc-unused Res £15
175. MUCH WENLOCK STATION-Coloured card used in 1905 showing platform and passengers etc Res £12
176. ALTRINCHAM STATION-Black & white postcard used 1907 showing staff and passengers etc Res £20
177. ALSAGER STATION-Black & white postcard showing platforms and passengers etc.-used 1905 Res £15
178. RAVENGLASS Miniature Railway terminus real photo postcard showing at least 4 trains and passengers etc-unused Res £6
179. ROMNEY, HYTHE & DYMCHURCH RAILWAY-Real photo card showing the works sheds with four engines lined up-unused Res £6
180. LONDON UNDERGROUND-Map postcard with an advert for the Liverpool Street Hotel during the ANGLO-FRENCH Exhibition. Text is in French [advert] so likely given to the Frogs when they came over for the Entente Cordiale "celebrations"-unused Res £15
181. NORTHAMPTON MINIATURE RAILWAY-Black & white postcard showing the train with lots of schoolboys waiting for their go!! Unused Res £10
182. LISTOWEL LARTIGUE Single track railway-real photo postcard of the railway with engine and staff etc and a little printed bit saying the line was closed in 1921-unused Res £15
183. PICCADILLY STATION, London Underground-Multiview real photo postcard of the tube station postally used 1932 Res £6
184. 1911 GREAT RAILWAY STRIKE-Postcard offering alternative forms of transport from SOUTHPORT Res £25



185. RAVENGLASS & ESKDALE RAILWAY-Black & white postcard of the engine "Sir Aubrey Brocklebank" with driver in position Res £6
186. CREWE STATION/2-S/rings dated 26.6.1914 ties 3 x 1d postage dues to underpaid postcard from Belgium Res £22
187. SEDBERGH STATION. Real photo postcard showing station buildings and passengers, used 1957. Res £8
188. MARKET DRAYTON. Black and white postcard showing platforms and passengers, used 1906. Res £9
189. ELWORTH. Real photo postcard showing platform signal box, unused. Res £10
190. THORNBYS STATION. Real photo postcard showing platforms and buildings, unused. Res £9
191. WOOTTON WAWEN. Black and white postcard showing platforms buildings and bridge, unused. Res £9
192. BOURNEVILLE CHOCOLATE WORKS STATION. Superb real photo postcard in mint condition, unused – see illustration. Res £20
193. KINETON STATION. Real photo postcard showing station buildings, passengers and a horse and cart, unused. Res £20
194. LLANFYLLIN STATION. Real photo postcard showing engine and carriages at station plus washing on the line, unused. Res £15
195. PANGBOURNE STATION. Black and white postcard showing passengers and station master, unused. Res £12
196. JH WOOLLEY'S EXHIBITION MODEL RAILWAY, New Olympia, Blackpool. Superb mint postcard, unused. Res £12
197. POLAND. Postcard of POZNAN with d/ring transit mark WARSZAWA19PORTLOTNICZY/b dated 14.8.1929. Res £12
198. INDIA. Postcard to Bournemouth with EDW VII one anna d/ring PONNARMS/set no 3 on 16.9.1911. Res £5
199. ESTONIA. 5s value tied by oval PARNU/TALLIN/POSTVAGON dated 29/6/1929. Res £8
200. K.A.U.T. Cover to Germany with GEO V 65 cent pictorial tied by d/ring DARESSALAM/TABORATPO up, dated 12.10.1936. Res £15
201. CANADA. 1935 silver jubilee 3c tied by s/ring Newport and Mont / RPO dated 13.5.1935 with trip no. 213. Res £6
202. NORWAY. Cover to Bath with 15 Ore pictorial tied by d/ring Oslo / Charlottenburg / B on 28.6.1950. Res £7
203. NORWAY. Cover to Bath with 3, 5 and 12 ore values tied by d/rings Oslo / Donbass 28.6.1952. Res £7
204. SOUTH AFRICA / PATRIOTIC LABEL. 1d SA railways and harbours label 'big push' raising funds for the governor general's fund during WW1. Res £10
205. CAMP / BRIDESTOW RSO DEVON. S/Ring dated 31.7.1904 ties stamp to postcard. Res £5

206. HQ RAILWAY RING. OHMS envelope official paid to British Rail Scottish Region, Glasgow with framed cache at bottom left dated 26.3.1974. Res £6
207. FINLAND. 10k postal stationery postcard. Addressed to Sunderland tied by double ring, KPXP No 8. Dated 6.8.1895. Res £7
208. SERBIA. 10K Blue postal stationery postcard to Scotland cancelled by d/ring Belgrade gare on 27.7.1912. Res £7
209. GERMANY. 1946 (October). Railway timetable and price list. Res £6
210. ESTONIA. 3s overprinted 5SENTI5 cancelled TALLINN/VAKSAL/EESTI on 11.9.1929. Res £9
211. ESTONIA. Postcard with 5 and 10s definitives tied by oval PVTALLINN-VALLA/3EESTIB on 21.6.1936. Res £7
212. GERMANY. 10 Pf postal stationery postcard cancelled by framed KOENIGSBERGi.PA/BAHNPOST No. 11. Dated 23.7.1885. Res £10
213. POLAND. Postcard to Berlin with 12 Rpf General Government Hitler Head tied by oval TARNOW (distr Krakow) – KRYNICA/BAHNPOST/ZUG612 dated 1.5.1942. Res £15
214. RUSSIA. Postcard to Bristol with 4K value tied by XIV of the Baltic railway station on 6.12.1902. Res £8
215. SWITZERLAND. 10 x c pictorial postal stationery postcards marking the 100<sup>th</sup> anniversary of Swiss railways in 1947 complete with original envelope. Res £10
216. SWEDEN. 5 Ore green postal stationery postcard cancelled by dotted circle PKXP No. 24A on 1.4.1894. Res £5
217. JAPAN. 6x 10s pictorial postal stationery postcards, cancelled by pictorial cancels on 471014. Res £6
218. CZECHOSLOVAKIA. 60H pictorial postal stationery postcard marking 100 years of Czech railways, cancelled by pictorial d/ring PRAHA1/100LETDRÁHYOLOMOUCKOPRAZSKE on 20.8.1945. Res £7
219. USA. Postcard cancelled by DUPLEX cancel SPOKANE and Seattle/RPO dated 31.6.1928 with trip No. 4 alongside is the cachet MAILED FROM THE TOP OF THE CASCADE MOUNTAINS (Washington). Res £8
220. DENMARK. Block of 4x 2 skilling railway parcel stamps, unused. And 3x modern 45K values. Res £5
221. SWEDEN. Blocks of 4x 25 ore and 35 ore Malmo Gamla Stads Buds EXPEDITION, unused. Res £12
222. DENMARK. 10 ore and 35 ore forpakkerindtics kilogram Dansk statsbaner labels both used. Res £6
223. SWEDEN. 4 Ore postal stationery envelope cancelled by dotted circle PKXP no. 8C on 31.12.1917. Res £6

224. LITHUANIA. To South Africa. Censored cover to Pilgrim's Rest, Transvaal. With block of 4x 15c recovery of vilnius issue tied by oval TPO on 27.6.1940. Res £18
225. ESTONIA. 5s definitive tied by oval VIRTUSU-RAPLA/8EESTID on 8.1.1965. Res £7
226. LUXEMBURG. Registered cash on delivery envelope to Vienna. With Hindenburg 12 and 50 Rpf overprint values tied by d/rings Luxemburg 2 on 21.8.1941. Top left is the Luxemburg BAHNHOF registration label and top right cash on delivery label (Nachnahme) – see illustration. Res £20.
227. LATVIA. 10s green postal stationery postcard with added 1s and 3x 3s values exhibition of LETTISH products tied by oval RIGA-WNTSFIS 17.9.1932 – see illustration. Res £20
228. SWEDEN. Tolf Ore blue postal stationery postcard to Stockholm cancelled by s/ring PKXPNR5NED on 18.10.1872. Res £7
229. BAVARIA. 5, 10 and 20 Pf, 12.3.1911 commemoratives, each with PERFIN letter E of German Bavarian railways. All 3 used and later issue 5 and 10 Pf with similar PERFIN used (5). Res £12
230. BANAVIERSO, INVERNESS-SHIRE/+. S/ring dated 15.8.1904 ties stamp to postcard. Res £4
231. THE SICILLIAN RAILWAY COMPANY LTD, LONDON. Printed on back flap of cover from London to Jersey on 29.12.1897. Res £5
232. ITALY. Entire to Torino with blue stamp tied by d/ring ambulante Genova – Torino/121 on 29.4.1864. Res £18
233. DOVER/STATION OFFICE-258 DUPLEX ties 1d lilac to cover address to London on 25.7.1887. Res £8
234. KINCRAIG, INVERNESS-SHIRE. S/ring dated 5.8.1924 ties stamps to postcard. Res £4
235. GILBERDYKE RSO-YORKS. s/ring dated 1.11.1905 ties stamp to postcard. Res £4
236. LOUGHTON RSO-WARWICKSHIRE. s/ring dated 9.4.1912 as transit mark on postcard from Chicago. Alongside is the rubber cancel. Res £6
237. RAVENSCAR/STATION/NERY. Undated oval telegraphic cancel on back of local unaddressed postcard. Res £9
238. LIVERPOOL ST STATION / EC2. s/rings dated 1.9.1936. Ties the EDW III values to registered first day cover address to Ewell. Res £9
239. BROADSTAIRS/STATION OFFICE. S/ring dated 12.6.1905 ties stamps to postcard. Res £7
240. BAINBRIDGE ASKRIGG RSO/YORKS. s/ring dated 26.8.1909 ties stamp to postcard. Res £7

241. TALYLLYN RAILWAY. Selection including decimal provisional overprints with others to 1/6d. Res £5
242. KILLWORTH RSO-Co. CORK. s/ring dated 19.1.1908 ties stamp to postcard. Res £5
243. GOLD COAST. GEO VI 3d registered postal stationery envelope to London with added shilling value tied by oval registered cancel of TRESTEA Gold Coast on 2.10.1950, at top left is the TRESTEA registration label. On back is the s/ring TPO1/GoldCoast dated 2.10.1950. Res £20
244. TOGO. Pre-addressed cover to Huddersfield with GEO V 1d Gold Coast overprinted for use in Togo tied by s/ring station/PALIME on 1.3.1920. Res £20
245. SWEDEN. 5 ore postal stationery postcard cancelled by dotted circle PKXP No. 22A on 8.1.1896. Res £6
246. INDIA. Real photo postcard of Jansi station, unused - see illustration. Res £12
247. LATVIA. 6s value tied by oval VALKA-RIGA/PW on 30.3.1923. Res £7
248. SAAR. Locally addressed cover with stamp tied by oval SAARBRUCKEN-NONNWEILR/BAHNPOST with trip No. 660. Res £7
249. SAAR. Locally address cover with stamp tied by oval SAARBRUCKEN-NONNWEILR/BAHNPOST dated 7.2.1951 with trip No. 674. £7
250. DENMARK. Danish state railway 15 ore postal stationery postcard cancelled by d/ring FEREDIKSHAVN 12.7.1954 at top left is double oval state railway cancel of Frederikshavn station dated the same date. Further strike on the back. Res £7
251. DENMARK. Danish state railway 7 ore postal stationery postcard cancelled by d/ring VOJENS on 8.7.1959, at left is double oval state railway cancel of VOJENS station dated the same day. Res £7
252. IRELAND. BELEEKRSO-Co. Fermanagh, dated 5.8.1903. Res £5
253. SWEDEN. 5 ore postal stationery postcard cancelled by dotted circle KPXP no. 10A.OPP dated 18.12.1893. Res £6
254. AUSTRIA. 5H postal stationery postcard cancelled by s/ring MARCHTRENK-BAHNHOF on 19.10.1891. Res £8
255. CZECHOSLOVAKIA. 5H Austrian postal stationery postcard cancelled by d/ring FPA/PILSEN-PRAG no. 115 on 14.11.1900. Res £8
256. USA. Postcard to Scotland with 1c stamp tied by DUPLEX cancel Portland, Maine/trans office-RMS on 3.12.1941 below is British censure mark T.119 and US 20c tax mark. Res £7
257. SWEDEN. 10 ore jubilee postal stationery postcard to Norway cancelled by s/ring PKP138 on 28.12.1938. Res £7



258. SWITZERLAND. Postcard with 2c value tied by d/ring AMBULANTE/MONTREUX-Z VESIMEN on 1.11.1907. Res £5
259. TALYLLYN RAILWAY. Complete sheet of 1/6d new denomination from plate 1c 2/6/1969. Res £8
260. TALYLLYN RAILWAY. Timetables and prices (fares) for 1971, 72, 73, 75 and 76 (no 74). Res £6
261. TALYLLYN RAILWAY. Complete sheet of 10x of the 1990 40<sup>th</sup> anniversary publicity label. Res £6
262. POLAND. Postcard with 15G tied by d/ring WARSZAW-KRAKOW dated 19.11.1930. Res £8
263. POLAND-Postcard to Czechoslovakia cancelled by d/ring GDVIJIA-WARSZAWA/No.125 on 1.7.1930 Res £12
264. CZECHOSLOVAKIA-Neat cover to Dorchester, Dorset with a pair of 15h 1949 U.P.U. VALUES TIED BY FRAMED NYMBURK ON 21.8.1949 res £9
265. GB EDW VIII REGISTERED POSTAL STATIONERY ENVELOPE TO SOUTH MELBOURNE dated 1.4.1908 with s/ring transit GEELONG/VICTORIA on the back, dated 4.5.1908, alongside unframed, circular cancel SOUTH MELBOURNE/VICTORIA dated 4.5.1908 also RES £15POLAND. Stampless unpaid postcard cancelled by d/ring BARANOWICZE-BIALYSTOK/No.307 on 18.9.1929. Res £12
266. SWEDEN. 10 ore postal stationery postcard to Folkestone cancelled by dotted circle FLODA station on 7.4.1897. Res £6
267. FRANCE. 10c SOWER postal stationery postcard to BROADSTAIRS with s/ring receiver Broadstairs station/Kent dated 15.3.1906, also postcard to NEW BARNET tied by d/ring Broadstairs Station / Kent on 1.10.1904. Res £5
268. GERMANY. Cover to Bulgaria 1935 25Pf railway stamp tied by KREFELD fig 2 railway slogan dated 4.11.1935. Res £5
269. TALYLLYN RAILWAY. Complete sheet of June 1969 1/6d value from Plate-on-sea. Res £8
270. GB. Book of 1<sup>st</sup> class stamps (gold), at either side BR DEAN GOODS No.2532. Res £6
271. GB. Book of 1<sup>st</sup> class stamps with 4x red ones, with either side 1<sup>st</sup> Class UTA W No.103. Res £6
272. ISAMBARD KINGDOM BRUNEL'S PADDINGTON STATION. Illustrated first day coin cover with the block of 6 values tied by pictorial Paddington Station cancels on 23.2.2006. Res £10
273. CLASSIC LOCOMOTIVES. Illustrated first day coin cover with the 6 values tied by bilingual PENYDARREM MERTHYR TYDFIL on 13.1.2004, below is a Trevithick £2 coin. Res £10

274. GREAT BRITISH RAILWAYS. Illustrated first day coin cover with the 6 values tied by pictorial cancel at Euston on 19.8.2010. Below is a 1947 GEO VI 1/-. Res £8
275. THE WORLD'S MOST FAMOUS CONTINENTAL EXPRESS (THE ROMANCE OF DINING BY RAIL). Illustrated first day coin cover with the 6 values tied by 'changing tastes' pictorial cancel of Victoria on 23.08.2005 at top centre is a 1 crown silver coin of the Isle of Man. Res £10
276. POST AND GO COVER / SPRING STAMPEX COVER with the 6 values tied by 'spring STAMPEX' pictorial cancels on 15.2.2017. Res £10
277. CLASSIC LOCOMOTIVES OF NORTHERN IRELAND. Pictorial first day cover with the strip of 4 values tied by first day cancel of Belfast on 18.6.2013. Res £8
278. YORK STATION / MALLARD 75<sup>th</sup> Anniversary. With 68p stamp tied by the great gathering / LNER / A4 Class / York on 3.7.2013. Res £8
279. PUB SIGNS. Illustrated first day coin cover with the 5 values tied by pictorial Shepherd Neame cancels on 12.8.2003. At bottom left is a 1 crown coin of the Isle of Man. Res £10
280. CLASSIC LOCOMOTIVES OF WALES. Benham silk first day cover with 78p stamp tied by pictorial oval cancel 589 blanche at Porth Maddog on 20.2.2014. Res £8
281. CLASSIC LOCOMOTIVES OF WALES. Benham Silk first day cover with the first-class stamp depicting LMS No. 7720 tied by pictorial d/ring of railway road Birmingham on 20.2.2014. Res £8
282. CLASSIC LOCOMOTIVES OF WALES. Pictorial Benham silk first day cover with 88p stamp tied by oval pictorial cancel 822 The earl at Welshpool on 20.2.2014. Res £8
283. CLASSIC LOCOMOTIVES OF WALES. Pictorial Benham silk first day cover with £1.28 BR5600 No. 5652 tied by pictorial cancel of Merthyr Tydfil 20.2.2014. Res £8
284. POST AND GO. Pictorial first day coin cover with the 6x first class values tied by pictorial mail by rail Birmingham cancel on 15.2.2017. Below is a GEO VI ½ d of 1938. Res £10
285. CENTENARY OF THE FLYING SCOTSMAN. Pictorial first day cover with the 8 values tied by Flying Scotsman pictorial cancel in the form of a railway wheel at Warrington on 9.1.2023. Res £9
286. BRUNEL (GENIUS OF THE INDUSTRIAL AGE). Benham pictorial silk first day cover with the box tunnel 40p value tied by pictorial box cancel on 23.2.2006. Res £8
287. BRUNEL (GENIUS OF THE INDUSTRIAL AGE). Benham pictorial silk first day cover with the Saltash bridge value tied by pictorial bridge cancel on 23.2.2006. Res £8

288. BRUNEL (GENIUS OF THE INDUSTRIAL AGE). Paddington Station 42p value tied by oval pictorial cancel of Paddington Station on 23.2.2006. Res £8
289. BRUNEL (GENIUS OF THE INDUSTRIAL AGE). Pictorial Benham silk first day cover with a 60p Clifton Suspension Bridge value tied by oval pictorial cancel of bridge on 23.2.2006. Res £8
290. BRUNEL (GENIUS OF THE INDUSTRIAL AGE). “”. 47p PSS GREAT EASTERN VALUE tied by pictorial oval cancel of Millwall London on 23.2.2006. Res £8
291. BRUNEL (GENIUS OF THE INDUSTRIAL AGE). “”. 69p Maidenhead Bridge Value tied by oval pictorial cancel of bridge on 23.2.2006. Res £8
292. NAPIER DELTIC. Pictorial first day coin cover with the 6x stamp booklet pane tied by Edinburgh pictorial cancels on 1.3.07. At bottom left is a 1 crown coin from the Isle of Man. Res £10
293. GREAT BRITISH RAILWAYS. Illustrated FDC with the 6 values tied by pictorial cancels at Balcombe, West Sussex on 19.8.2010. Res £8.
294. POST AND GO. Royal Mail FDC with the 6x 1<sup>st</sup> class values tied by spring STAMPEX cancel on 15.2.2017. Res £8
295. NENE VALLEY RAILWAY. Benham pictorial silk first day cover marking the 50<sup>th</sup> anniversary of the record-breaking run by Mallard from Grantham to Peterborough on 3.7.1988. At right is 20p NVR railway letter stamp tied by special mallard cancel on the same day. Res £8
296. ART ON THE LONDON UNDERGROUND. Benham pictorial FDC with the 87p value tied by oval Wellington St pictorial underground cancel on 9.1.2013. Res £8
297. ART ON THE LONDON UNDERGROUND. Benham pictorial with a 77p value tied by special cancel of Paddington on 9.1.2013. Res £8
298. ART ON THE LONDON UNDERGROUND. 1<sup>st</sup> class value tied by pictorial London Underground cancel on 9.1.2013. Res £8
299. JERSEY RAILWAYS III. Pictorial FDC with the 6 values tied by special cancel on 6.5.2009. Res £5
300. CLASSIC LOCOMOTIVES OF SCOTLAND. Benham pictorial FDC 1<sup>st</sup> class value Glen Lyon tied by pictorial oval cancel of the loco and Springburn, Glasgow on 8.3.2012. Res £8
301. CLASSIC LOCOMOTIVES OF SCOTLAND. Benham pictorial FDC 68p tied by special cancel Kittybruster, Aberdeen on 8.3.2012. Res £8
302. CLASSIC LOCOMOTIVES OF THE UK. Benham pictorial FDC celebrating the life of William Dargan, 1<sup>st</sup> class Irish definitive (green) tied by classic loco cancel of Belfast 20.2.2014. Res £8

303. CLASSIC LOCOMOTIVES OF THE UK. Benham pictorial FDC with 1<sup>st</sup> class stamp featuring loco Dean Goods No. 2532 tied by unframed oval cancel at Liverpool on 20.2.2014. Res £8
304. CLASSIC LOCOMOTIVES OF THE UK. Benham pictorial FDC with Scottish 1<sup>st</sup> class definitive (blue with white cross), celebrating the work of Joseph Locke, tied by British Railways logo pictorial cancel at Edinburgh on 20.2.2014. Res £8
305. CLASSIC LOCOMOTIVES OF THE UK. Benham pictorial FDC celebrating George Stevenson with English 1<sup>st</sup> class definitive (cross of St. George) tied by special cancel at Newcastle on 20.2.2014. Res £8
306. CLASSIC LOCOMOTIVES OF THE UK. Benham pictorial FDC with Welsh 1<sup>st</sup> class definitive (flag design), celebrating the work of Sir John Hawkshaw, tied by special cancel at Merthyr Tydfil on 20.2.2014. Res £8
307. CLASSIC LOCOMOTIVES OF THE UK. Benham pictorial FDC with 60p value Peckett R2 Landy Angela tied by pictorial cancel of London on 20.2.2014. Res £8
308. CLASSIC LOCOMOTIVES OF THE UK. Benham pictorial FDC with 1<sup>st</sup> class value featuring BR D34 Nos. 62471 and 62496 tied by pictorial engine cancel at Edinburgh on 20.2.2014. Res £8
309. CLASSIC LOCOMOTIVES OF THE UK. Benham pictorial FDC with 68p value depicting BR D40 Nos. 62276 Gordon Highlander tied by pictorial engine cancel of Dundee on 20.2.2014. Res £8
310. POSTAL OFFICE MAIL RAIL. Last day. Cover with 2x 1<sup>st</sup> class stamps tied at Mount Pleasant on 31.5.2003 (day of mothballing). Res £5
311. 150<sup>th</sup> ANNIVERSARY OF THE LONDON UNDERGROUND. Benham commute from the suburbs pictorial FDC with 1<sup>st</sup> class (1911) value tied by London Transport cancel at Edinburgh on 9.1.2013. Res £8
312. 150<sup>th</sup> ANNIVERSARY OF THE LONDON UNDERGROUND. With £1.28 depicting the Jubilee Line at Canary Wharf (1999) tied by special cancel on 9.1.2013. Res £8
313. 150<sup>th</sup> ANNIVERSARY OF THE LONDON UNDERGROUND. Benham pictorial FDC depicting classic rolling stock with £1.28 (1938) tied by pictorial London Underground cancel on 9.1.2013. Res £8
314. 150<sup>th</sup> ANNIVERSARY OF THE LONDON UNDERGROUND. Benham FDC 1<sup>st</sup> class value depicting Boston manor tube station (1934) tied by London 1<sup>st</sup> day of issue cancel on 9.1.2013. Res £8
315. 150<sup>th</sup> ANNIVERSARY OF THE LONDON UNDERGROUND. Benham FDC 2<sup>nd</sup> class stamp showing men tunnelling below London streets (1898) tied by pictorial cancel on 9.1.2013. Res £8
316. 150<sup>th</sup> ANNIVERSARY OF THE LONDON UNDERGROUND. Benham FDC 2<sup>nd</sup> class value showing the opening of the metropolitan

- railway (1863) tied by pictorial London Underground cancel on 9.1.2013. Res £8
317. CLASSIC LOCOMOTIVES OF SCOTLAND. Benham FDC limited edition pictorial depicting Cowlairs railway works of the North British railway (1865) with the first class D34 value tied by pictorial cancel of the North British Railway on 27.9.2012. Res £8
  318. LONDON UNDERGROUND. Benham pictorial first day coin cover with the 6 values tied by pictorial cancel of Wellington St London on 9.1.2013. Below is a 1966 QE II 1/-. Res £10
  319. FLYING SCOTSMAN. Benham pictorial first day coin cover with the 8 values tied by wheel-shaped council of the Flying Scotsman on 9.3.2023. Below is a CHARLES III £2 Flying Scotsman coin. Res £15
  320. APPROX. 130 QEII T.P.O Covers in two albums-very clean and at less than 4p each!! Res £5
  321. NEW ZEALAND. 3 covers with stamps tied by OTAKIRAILWAY/NZ d/rings on 5.10.2022. Res £4
  322. GB. 50<sup>th</sup> anniversary cover of the Teesside Airport Railway Station, 2 insert cards of Liverpool and Manchester railway, and Welsh highland railway illustrated FDC marking 100 years' service on 31.07.2022. Res £5
  323. ITALY. Cover from Milan Station to Berlin 3.6.1940 with rectangular German censor markings. Res £5
  324. MID-HANTS RAILWAY. 7x sheetlets marking various events with 1 signed by Neil Oakley. D-Day 25p value tied to postcard on 10.9.1994. 25p Christmas stamp with image taken from the Christmas Carol (1843). Pictorial FDC with 25p Merlin loco tied by Alresford FD cancel on 3.9.1994. Two odd watercress line covers. Res £5
  325. GB. Illustrated FDC's for the railway issues in the 2,000's plus mint stamps, presentation packs and other-good lot-plenty of postage! Res £38
  326. AFRICA-SOMALIA, SOMALI REPUBLIC, SOUTH AFRICA & STATES, SOUTH AFRICAN HOMELANDS, SWAZILAND & TOGO Res £20
  327. AFRICA-NAMIBIA including South West Africa pairs + Officials, NIGER and NIGERIA-Same again-lovely lot Res £20
  328. AFRICA-Former SPANISH SAHARA, SAO TOME & PRINCIPE, SENEGAL-NIGER Combination issues, SENEGAL and SIERRA LEONE Res £20
  329. AFRICA-NYASALAND with GEO VI & QEII 10/- values, MALAWI, MALI, MAURITANIA, MAURITIUS, SPANISH MOROCCO, MOROCCO and MOZAMBIQUE-Another great lot of thematics includes mini sheets, stamps and the odd cover Res £20
  330. AFRICA-LESOTHO, LIBERIA, LIBYA, MADAGASCAR and MALAWI-Another great lot of thematics Res £20

331. AFRICA-K.U.T Pre-Independence issues including GEO V 5/- unused plus individual country collections from Kenya, Uganda and Tanzania Res £25
332. AFRICA-GABON, GUINEA, GAMBIA, GHANA, GOLD COAST, GUINEA BISSAU, EQUATORIAL GUINEA and IVORY COAST-Brilliant lot of thematics etc. Res £20
333. AFRICA-DJIBOUTI, FRENCH SOMAILIA, EGYPT, ERITREA and ETHIOPIA-Another superb collection of thematics Res £20
334. AFRICA-CAMEROONS, CENTRAL AFRICAN REPUBLIC, CENTRAL AFRICAN EMPIRE, TCHAD, COMORES & CONGO. Again, a superb lot in excellent condition Res £20
335. AFRICA-BELGIAN CONGO Surcharges, overprints etc + ZAIRE, SOUTHERN RHODESIA, ZIMBABWE, NORTHERN RHODESIA and ZAMBIA-Another great lot of thematics Res £20
336. AFRICA-ALGERIA, ANGOLA, DAHOMEY, BENIN, BOTSWANA, BURKINA FASO, UPPER VOLTA and BURUNDI-Superb lot of thematics in superb condition, mint, some used and mini-sheets and postal stationery etc. Res £20
337. VALE OF RHEIDOL, WELSHPOOL & LLANFAIR and a host of smaller company railway letter stamps including Worth Valley Isle of Man steam Rly etc. etc. etc. Pristine lot Res £45
338. TALYLLYN RAILWAY-Brilliant lot includes the two 1/- surcharge sheets on 11d and right through later issues with mini-sheets, stamps and the odd cover Res £45
339. NORTH YORKSHIRE MOORS RAILWAY Includes the less common "To be Called For" labels, mint stamps, mini-sheets etc. superb lot Res £28
340. NENE VALLEY RAILWAY-Superb lot from the Extension Fund issue through includes mint stamps and mini-sheets etc. Res £28
341. BLUEBELL RAILWAY-Excellent selection from the provisional overprints through including all mint stamps and mini-sheets Res £25
342. JERSEY. FDC presentation pack, cards, and literature. Res £5
343. IRELAND-Stamps, mini-sheets and cover including pairs Res £10
344. EUROPE-ALBANIA, AUSTRIA, BELGIUM, CUBA and BULGARIA-Very good lot Res £20
345. EUROPE-CYPRUS, TURKISH CYPRUS, CZECHOSLOVAKIA, BOHEMIA & MORAVIA, CZECH REPUBLIC, SLOVAKIA, DENMARK, ESTONIA, FINLAND and FRANCE-Lovely lot of stamps, covers, mini-sheets etc. Res £20
346. EUROPE-GIBRALTAR, GREECE Including Red Cross inverted overprint & HUNGARY-Another very good lot of thematics Res £20

347. EUROPE-ITALY, LATVIA, LITHUANIA and LUXEMBURG  
Including Official overprints etc.-More of the same-excellent selection Res  
£20
348. EUROPE-MONACO, NETHERLANDS, NORWAY, POLAND  
and PORTUGAL-Another very clean and attractive selection of railway  
thematic stamps etc Res £20
349. EUROPE-ROMANIA Selection of mini-sheets, mint & used stamps  
etc Res £10
350. EUROPE-PARIAH STATE OF RUSSIA and a few RUSSIAN  
REPUBLICS-Both Soviet and after; another good lot Res £15
351. EUROPE-SAN MARINO, SPAIN, SWEDEN, SWITZERLAND,  
VATICAN CITY, YUGOSLAVIA and subsequent states of the former  
Yugoslavia-another bumper lot Res £20
352. GB. Commemorative railway linked issues, all periods but mainly  
QE II. Res £4
353. EAST AND WEST JUNCTION RAILWAY – 1899 2d red on  
yellow paper – a full sheet of 12 Wilson No. 4248-4259. RLS Cat No. 3.  
Res £20
354. IRELAND – GREAT SOUTHERN RAILWAY – parcel label ‘to  
Skibbereen’ and ‘to Dromod’. Res £6
355. IRELAND – MIDLAND GREAT WESTERN RAILWAY – parcel  
label black on pink – ‘passenger luggage for Chester’ via Liffey Junction,  
Kingstown, Holyhead and Linwry. Res £6
356. IRELAND – GREAT SOUTHERN AND WESTERN RAILWAY  
– parcel label ‘to Clondalkin’. Res £5
357. IRELAND – DUBLIN – Wicklow and Wexford Railway – parcel  
label ‘Omagh’. Res £5
358. IRELAND – Great Northern Railway Co. Ireland – parcel label ‘to  
Fintona’. Res £5
359. IRELAND – Sligo Leitrim – Northern Counties Railway – parcel  
label ‘to Belcoo’. Res £5
360. RSO-D/rings Criccieth (R removed) 11.6.1928 Bexhill-on-sea  
4.8.1903 Coombe Martin 29.7.1914 Criccieth (r removed) 9.9.1927  
Hunstanton 2.7.1907 Hindhead, Haslemere 2.8.1906 Grange - Over sands  
16.3.1912 Lyndhurst 3.6.1906 Res £6
361. RSO-S/rings Mortehoe 24.6.1909, Eastleigh 14.4.1905, Allendale  
10.5.1910, Yarmouth 13.10.1908. (4) Res £5
362. FFESTINIOG. 1973 decimal provisional 1p on 1/- in dark red, full  
sheet of 12 with sheet no. 02777. Wilson 16 catalogued £135 + Res £45
363. RAVENGLASS AND ESKDALE. 1/2d in black. Res £5
364. RAVENGLASS AND ESKDALE RAILWAY. 15p definitive light  
brown red, lower marginal example with broken A variety. Wilson 5BBA.  
Res £6



365. NYMR. 1994 anniversary of the Whitby and Pickering 25p with “sterling” spelling error and uncut sheet of 2x blocks of 4 each cancelled by s/ring dated 30.12.1994. Prepaid for use but not issued. See Wilson catalogue footnote. Res £15
366. NYMR. Imperf proof sheets of 1996 letter service seminar. Wilson 75A. Res £10
367. RAVENGLASS AND ESKDALE RAILWAY. 1978 Queen’s silver jubilee provisional 15p on 10p, full sheet of 12 with sheet no. 0532. Wilson no. 11. Res £20
368. RAVENGLASS AND ESKDALE RAILWAY. 1971 15p definitive light brown red, complete sheet of 6. Wilson 5BB. Res £20
369. RHandD RAILWAY. 1982 5p + 15p on 10p, emergency provisional overprints in a left marginal block of 4. Each overprinted by a boxed specimen handstamp. Res £20
370. RHandD RAILWAY. 1982 5p on 15p, emergency provisional overprints, lower left corner block of 4 with plate markings 1B1B1B. Res £25
371. RHandD RAILWAY. 1982 5p + 15p (green loco), emergency provisional overprints, top right corner block of 4 with QUESTA traffic lights in right margin. Each stamp is overprinted “SPECIMEN” in black. Res £20
372. RHandD RAILWAY. 1982 20p on 15p, provisional overprint, complete sheet of 35 showing cylinder markings of the House of Questa (traffic lights) and 1D1D1D. Wilson No. 9B catalogued £250. Res £80
373. RHandD RAILWAY. 3 provisional overprint values on FDC with QE II 15 1/2p tied at Ashford, Kent on 1.2.1982 (first day of new post office letter rate). The provisional overprints are tied by provisional RH&D cancels on the same day. Res £10
374. RHandD RAILWAY. 20p value marking the Romley Steam Centenary overprinted twice “SPECIMEN” in black. Res £6
375. TALLYLLYN. 1/- centenary issue overprinted 1/2d in green. Block of 10 stamps. Catalogued £250. Res £80
376. WELSHPOOL AND LLANFAIR RAILWAY. 1975 definitive blocks of 4 in a complete uncut sheet of 3 blocks. Res £30
377. WEST SOMERSET RAILWAY. 21 different travel or platform tickets circa 1980s, including 1976 reopening platform ticket and large souvenir 1987 125th anniversary ticket. Res £10
378. WEST SOMERSET RAILWAY. 1987 125<sup>th</sup> anniversary maxi card showing GWR Tank 5542 signed by the designer, limited edition no. 23/50. Res £15
379. GARSTANG KNOTT END RAILWAY. 1891 2d green block of 4 from the first issue. Res £20

380. KNOTT END RAILWAY. Block of 4x 2d blue-green with control  
Nos. 961 to 964. Res £20

END OF AUCTION LOTS  
GOOD LUCK WITH YOUR BIDS  
MORE IN THE WINTER AUCTION  
MORE LOTS NEEDED-COME SORT ON, HAVE THAT  
LONG AWAITED AND NEEDED SORT OUT!!

